

represent captured and engulfed hepatic debris by BMMs, respectively. (b) ELISA-assisted TNF- α and IL-1 β detection in co-culture supernatants (*p<0.001). Representative of n=3/group.

Figure 8. TIM-4⁺ macrophages trigger liver IRI in CD11b-DTR mice. Adoptive transfer of TIM-4 proficient (WT) but not TIM-4 deficient BMM (5×10^6 cells i.v. at -1h) recreated hepatocellular damage in CD11b-DTR mice (6h reperfusion after 90min ischemia), evidenced by (a) sALT levels; (b) hepatic histology (representative H&E; magnification x100 and x400); and (c) TNF- α , IL-1 β , and IL-6 expression (*p<0.001). n=4-6/group.

Supplementary Figure 1. Serum ALT levels in: (a) PBS- vs. DT-treated WT or CD11b-DTR mice at 6h post-infusion; (b) control Ig- or Diannexin-treated liver IRI (6h reperfusion after 90min ischemia; *p<0.001, N.S. p>0.05). n=4/group.

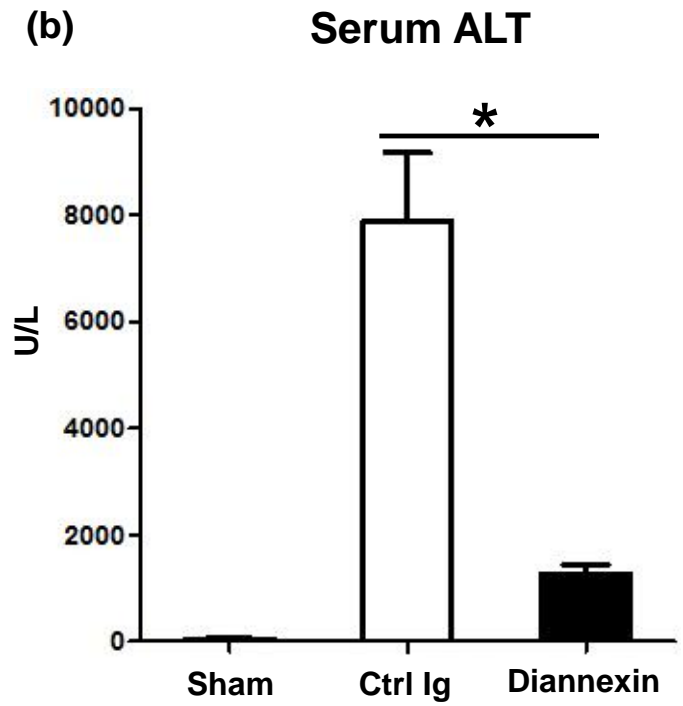
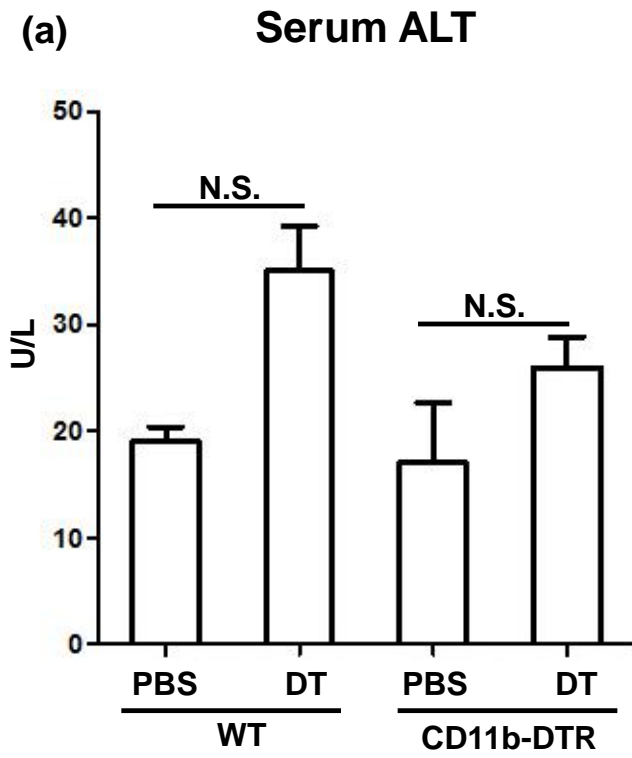
Supplementary Figure 2. Suzuki's score of histological liver IR-damage in: (a) TIM-4 KO or WT mice treated with anti-TIM-4 mAb/control Ig; and (b) CD11b-DTR mice with/without DT-macrophage depletion; and repopulated with BMM from WT or TIM-4 KO donors (5×10^6 cells i.v. at -1h). (*p<0.001). n=5-6/group.

Supplementary Figure 3. Flow cytometry-assisted TIM-4 expression by (a) CD11c⁺CD8⁺ DCs and (b) CD11b^{Lo}F4/80^{Hi} Kupffer cells in IR-stressed livers. Representative of n=4-6/group.

Supplementary Figure 4. (a) TIM-1 gene induction in control Ig, or anti-TIM-4 mAb pretreated WT mice in liver IRI. (b) TIM-4 gene levels in WT livers subjected to ischemia alone (90min); or ischemia (90min) plus 6h reperfusion (*p<0.001). n=5-6/group.

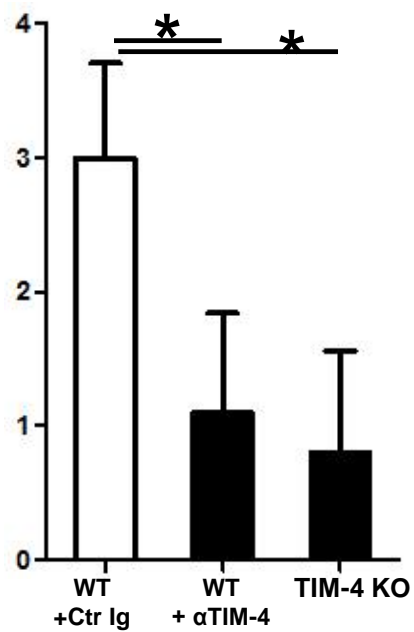
Supplementary Table 1. Primers used by qRT-PCR.

Supplementary Fig. 1

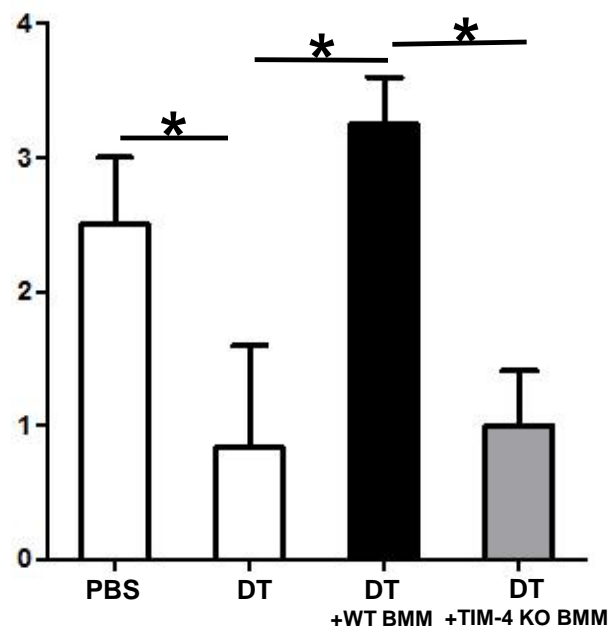


Supplementary Fig. 2

(a) Suzuki's Liver IRI Score

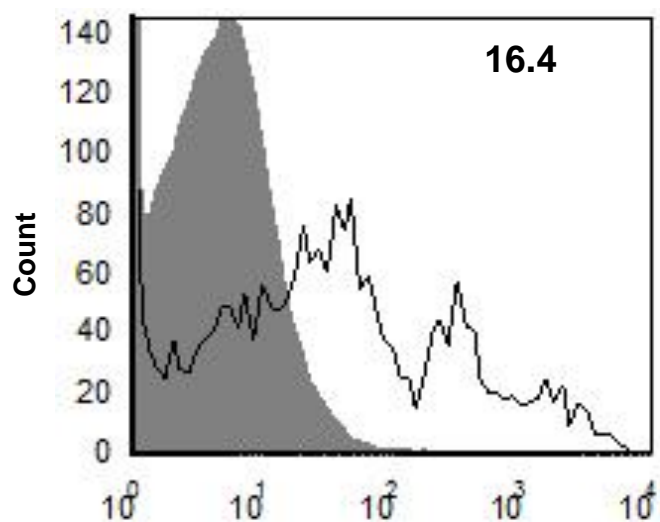


(b) Suzuki's Liver IRI Score in CD11b-DTR mice

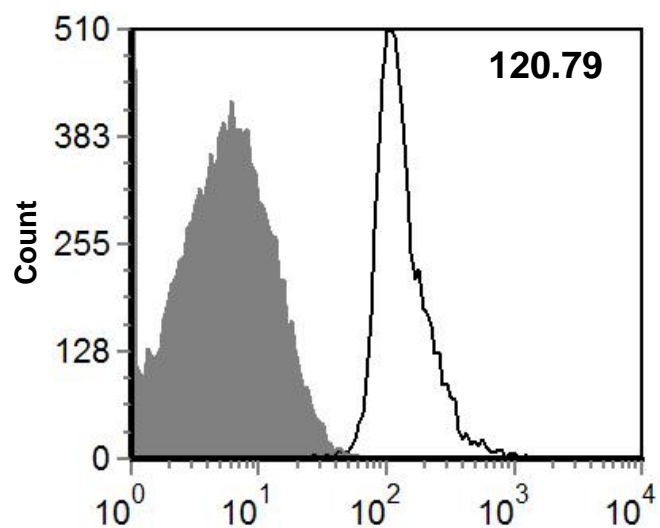


Supplementary Fig. 3

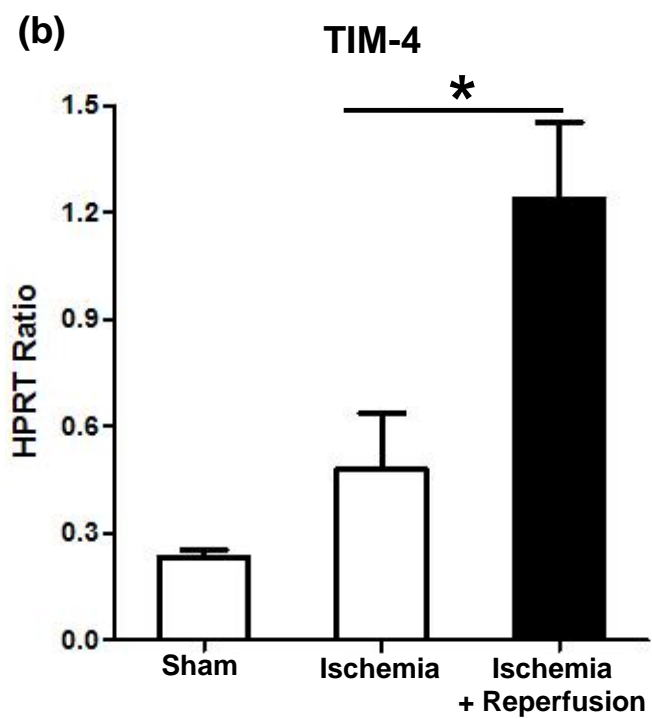
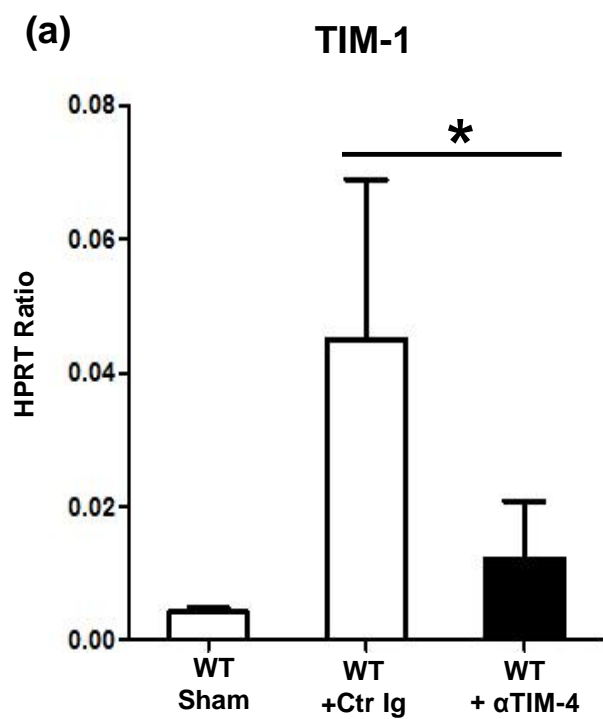
(a) TIM-4 Expression on CD11c⁺CD8⁺ DC



(b) TIM-4 Expression on CD11b^LF4/80^{Hi} Kupffer cells



Supplementary Fig. 4



Supplementary Table 1

Primers used for Quantitative RT-PCR

Gene	sense	antisense
TIM-4	gaagaatgtgcgcttggag	gggtggttgttgttggttt
IRF3	ccccaagaaaatccactgaa	ctcggtagaaggcggta
SR-A	ttctcctcctcctcctc	tggaagggatcatagatgtcg
LOX-1	cccttattgtacagtggacacaat	gattcctgtgaagtgtttctgc
MARCO	agggagacaaaggggaccta	tggtttccagcatcacctt
TLR2	ggggcttcacttctctgctt	agcatcctctgagatttgacg
TLR4	ggactctgatcatggcactg	ctgatccatgcattggtagg
TLR9	gaatcctccatctcccaacat	ccagagtctcagccagcact