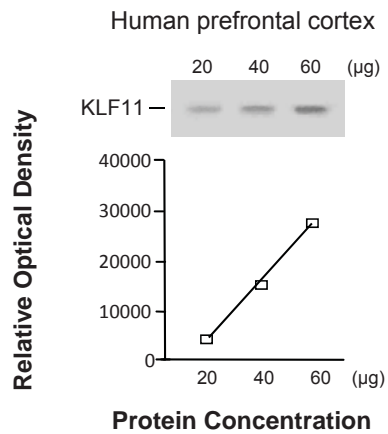


Supplemental Data Figure 1



Supplemental Data Figure 1. Relationship between the optical density values of Western blot protein immunoreactivities and total protein concentration for KLF11/TIEG2 in human brain tissue. Wells were loaded with three concentrations consisting of 20, 40, and 60 µg of total protein of cortical standard (dissected from the anterior prefrontal cortex of one human healthy control subject) and probed for KLF11/TIEG2. The anti-KLF11 antibody-detected bands on the gel corresponded to a molecular weight of 72 kDa. The relative optical density (ROD) values and protein concentrations displayed linear relationships.