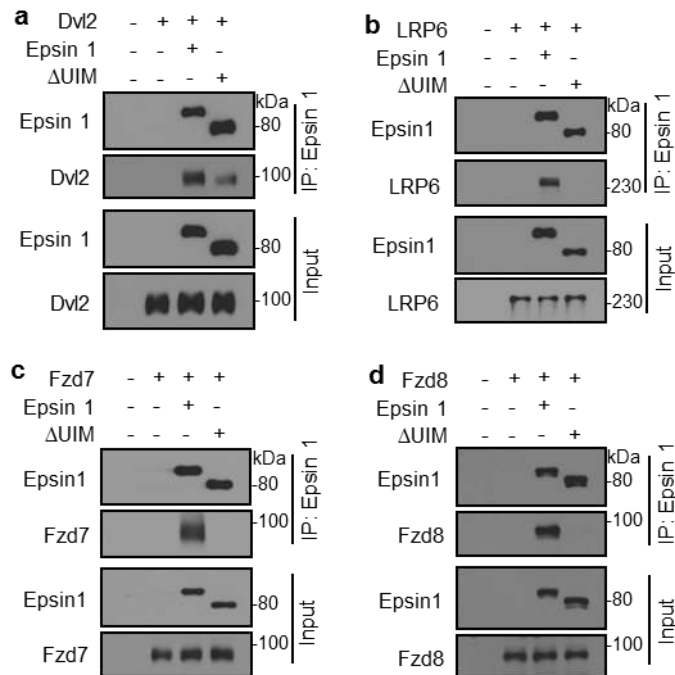
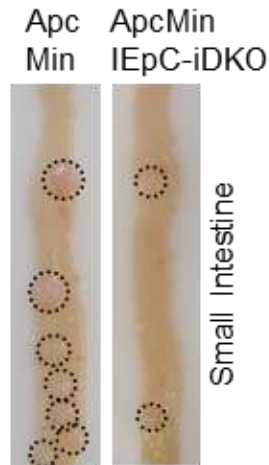


Supplementary Figure 1. Epsin 1 constitutively interacted with Dvl2. Co-immunoprecipitation of endogenous Dvl2 by anti-epsin 1 antibody in control and epsin-deficient (KD) HT-29 cells analyzed by Western blotting. Representative Western blot from n=6.

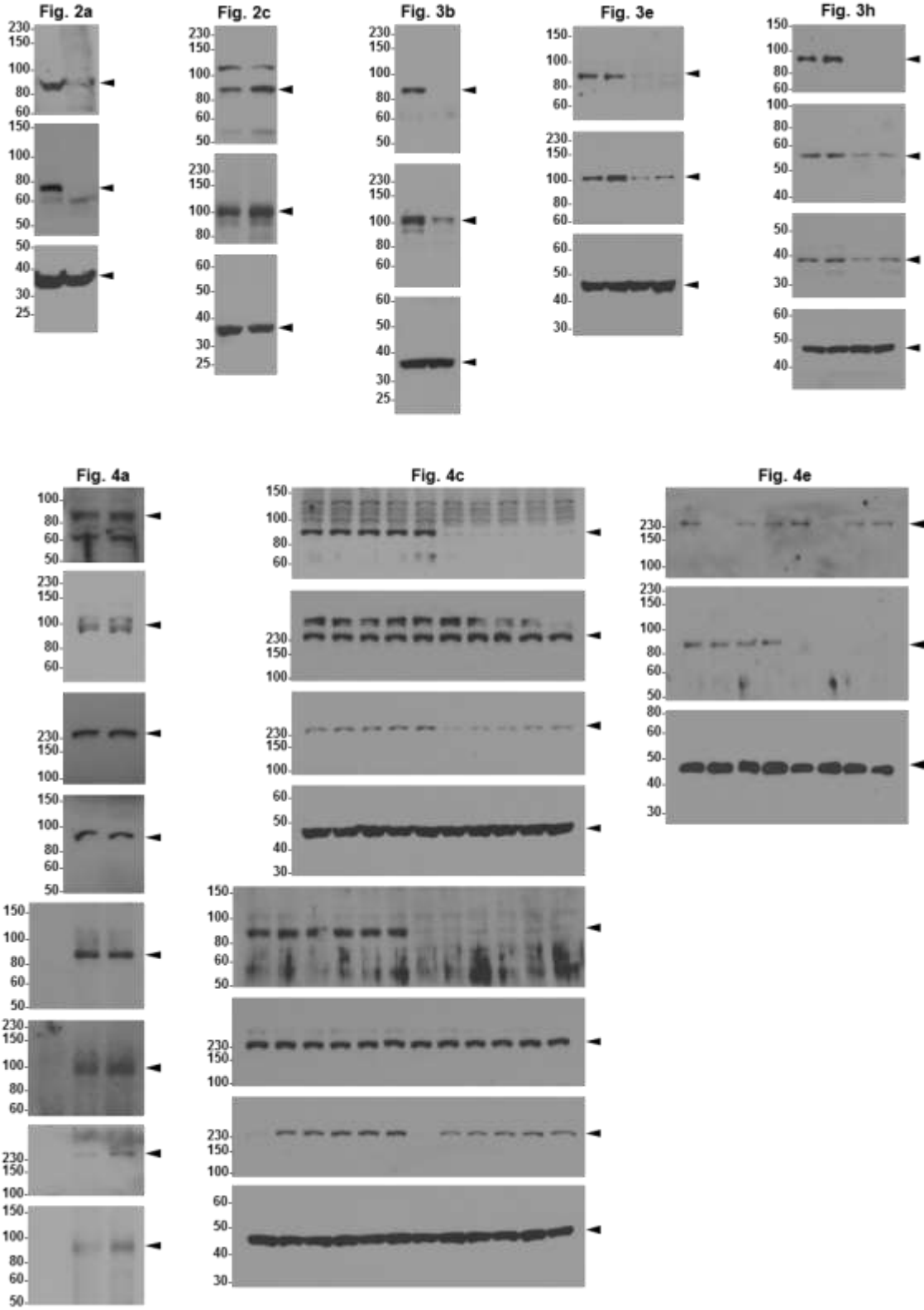


Supplementary Figure 2. Epsin UIM was required for Wnt-dependent interaction with the Wnt receptors. (a-d) HEK 293T cells were co-transfected with Dvl2 **(a)** LRP6 **(b)**, Fzd7 **(c)** or Fzd8 **(d)** and either full length epsin 1 or epsin 1 ΔUIM. After Wnt3a stimulation (100 ng mL^{-1} , 5 min), complexes were co-immunoprecipitated by anti-epsin 1 antibody then analyzed by Western blotting for Dvl2 **(a)** LRP6 **(b)**, Fzd7 **(c)** or Fzd8 **(d)**. Representative Western blot from n=6.

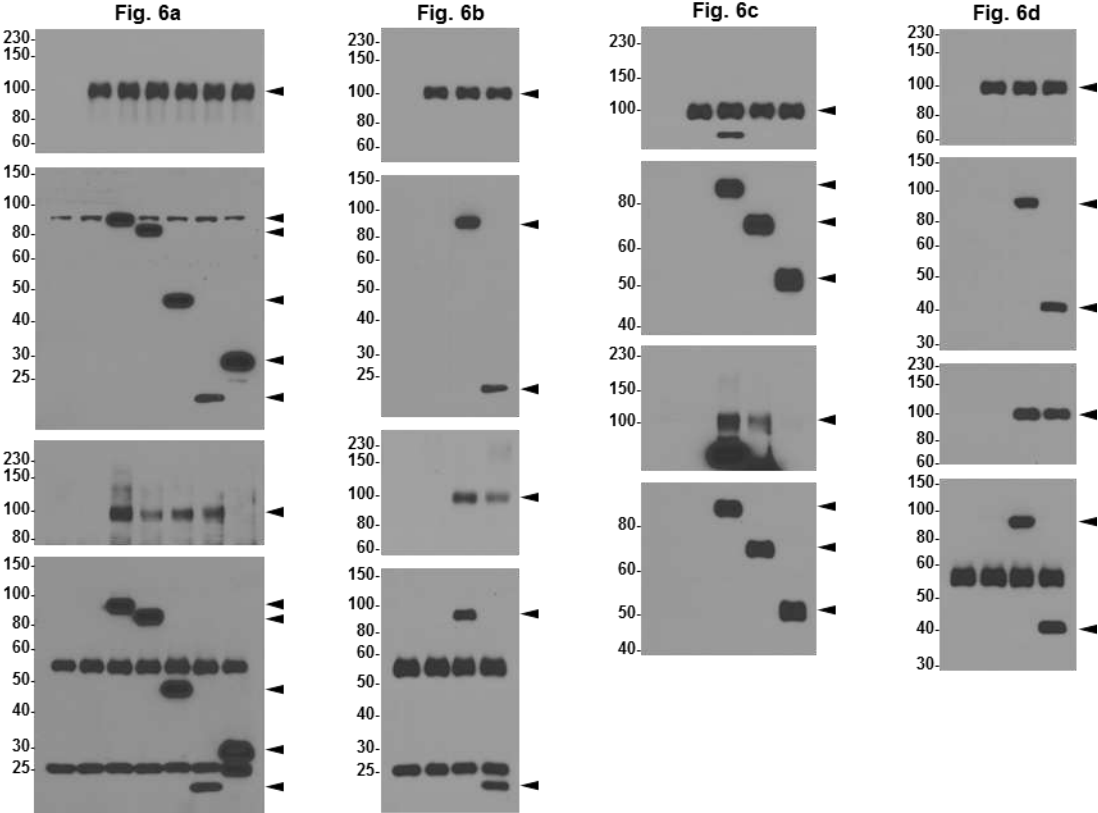
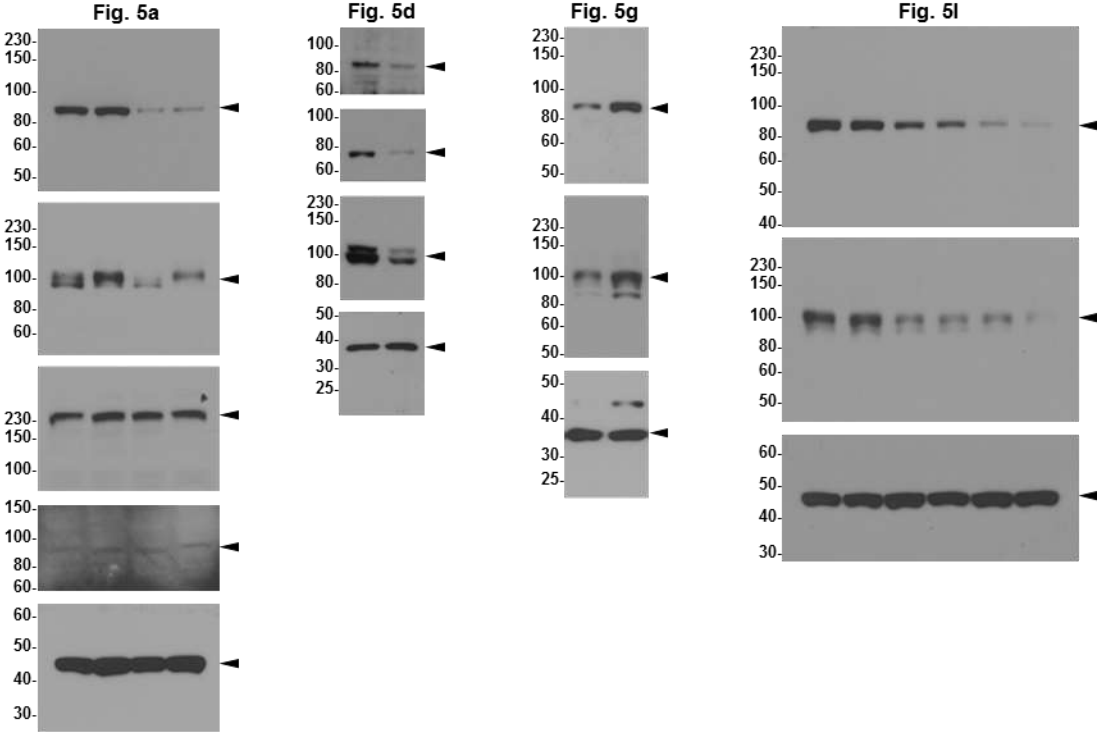


Supplementary Figure 3. Epsin depletion protected against intestinal tumor development in Apc^{Min} mice. Representative image of longitudinally cut small intestines from Apc^{Min} and $Apc^{Min}/IEpC-DKO$ mice sacrificed at 20 weeks of age; circles indicate tumors in the small intestine. Representative image from $n=11$.

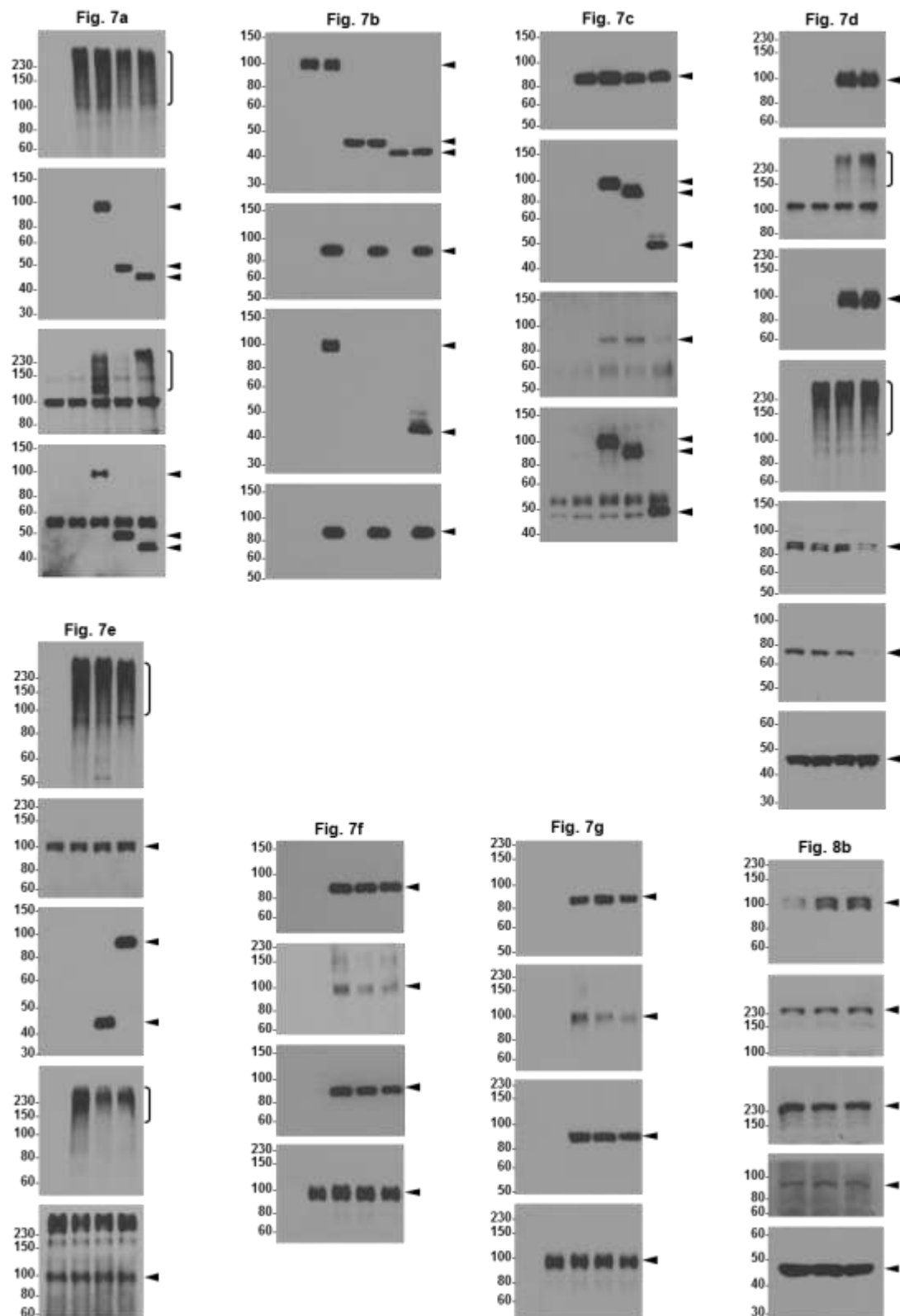
Supplementary Figure 4. Full scans of Western blots in the main text and in supplementary information.



Supplementary Figure 4. Full scans of Western blots in the main text and in supplementary information.



Supplementary Figure 4. Full scans of Western blots in the main text and in supplementary information.



Supplementary Figure 4. Full scans of Western blots in the main text and in supplementary information.

