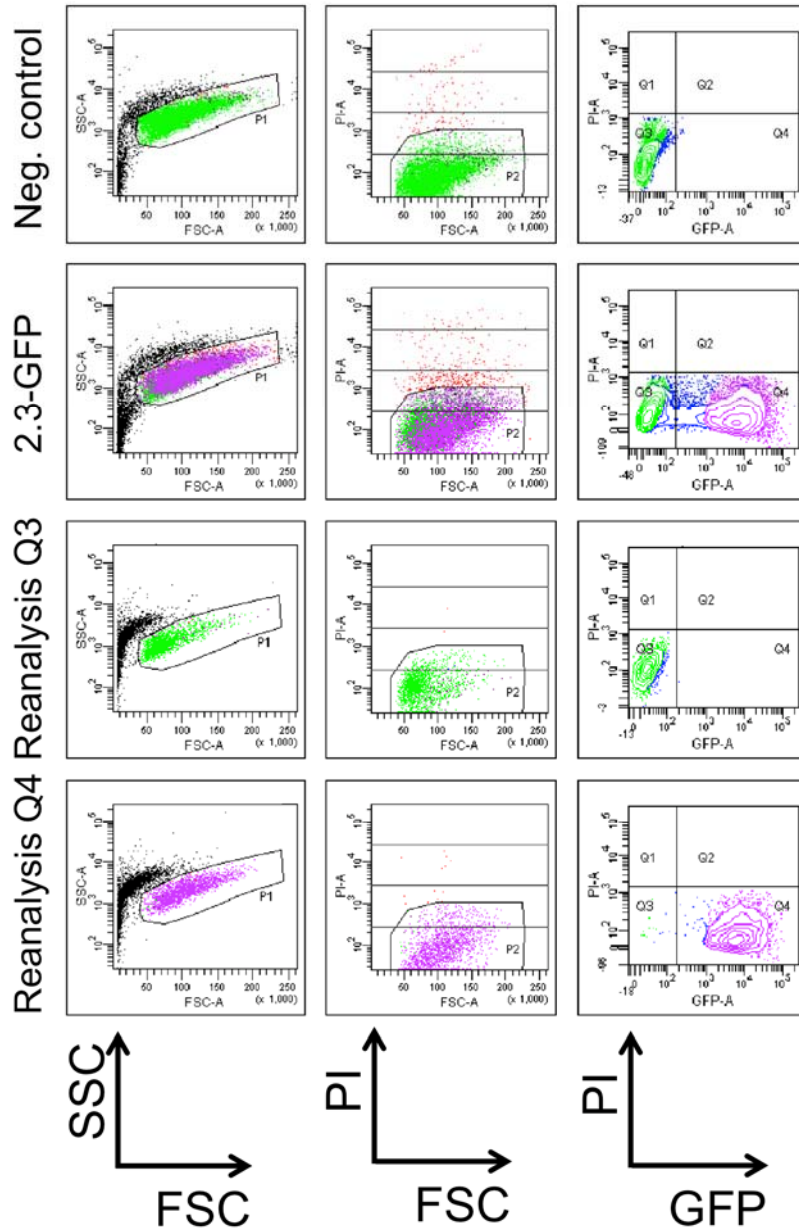


| <b>Gene ID</b>         | <b>Assay ID</b> |
|------------------------|-----------------|
| <i>Bsp</i>             | Mm01208381_g1   |
| <i>Dmp1</i>            | Mm00803831_m1   |
| <i>Dspp</i>            | Mm00515666_m1   |
| <i>Gapdh</i>           | Mm99999915_g1   |
| <i>Osteocalcin</i>     | Mm03413826_mH   |
| <i>Type I collagen</i> | Mm00801666_g1   |

**Suppl. Table 1. Primers used for TaqMan qPCR reactions.**



**Supplemental Figure 1. GFP-based FACS sorting of primary dental pulp cultures.** Primary dental pulp cultures derived from 2.3-GFP transgenic mice were grown under control culture conditions. At day 7 cells were subjected to GFP-based FACS sorting to separate relatively homogeneous populations of GFP<sup>+</sup> and GFP<sup>-</sup> cells. Cells were gated based on FSC and SSC, PI and GFP. Reanalysis demonstrated a high ( $\geq 98\%$ ) purity of isolated populations of 2.3-GFP<sup>-</sup> (Reanalysis Q3) and 2.3-GFP<sup>+</sup> cells (Reanalysis Q4).