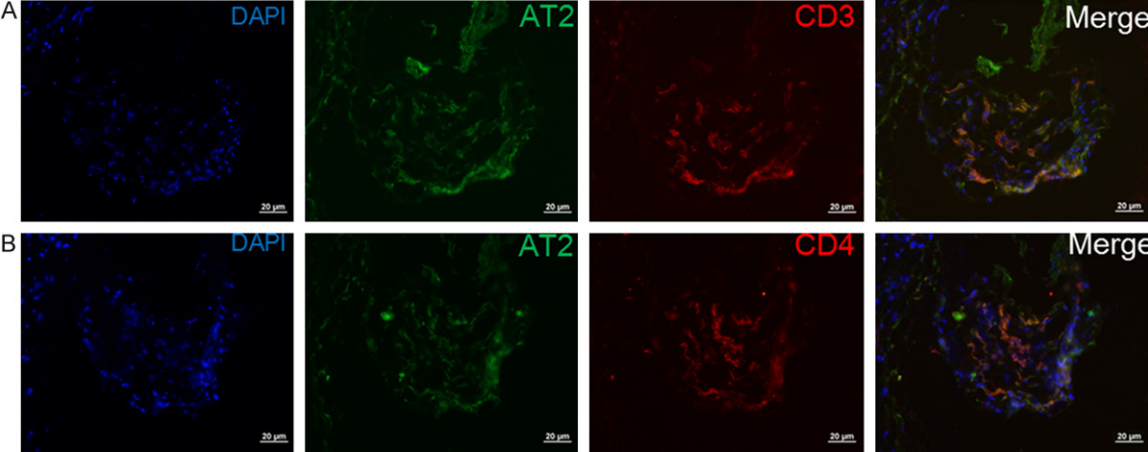


CD4+AT2+ cell and thoracic aortic aneurysm



**Figure S1.** Some AT2<sup>+</sup> cells in TAA exhibit a CD3/CD4 double-positive phenotype. Comparative analyses of sequential sections of aneurysm tissue showed that some AT2<sup>+</sup> cells were positive for CD3 and CD4 in the first (A) and second sections (B), respectively.