

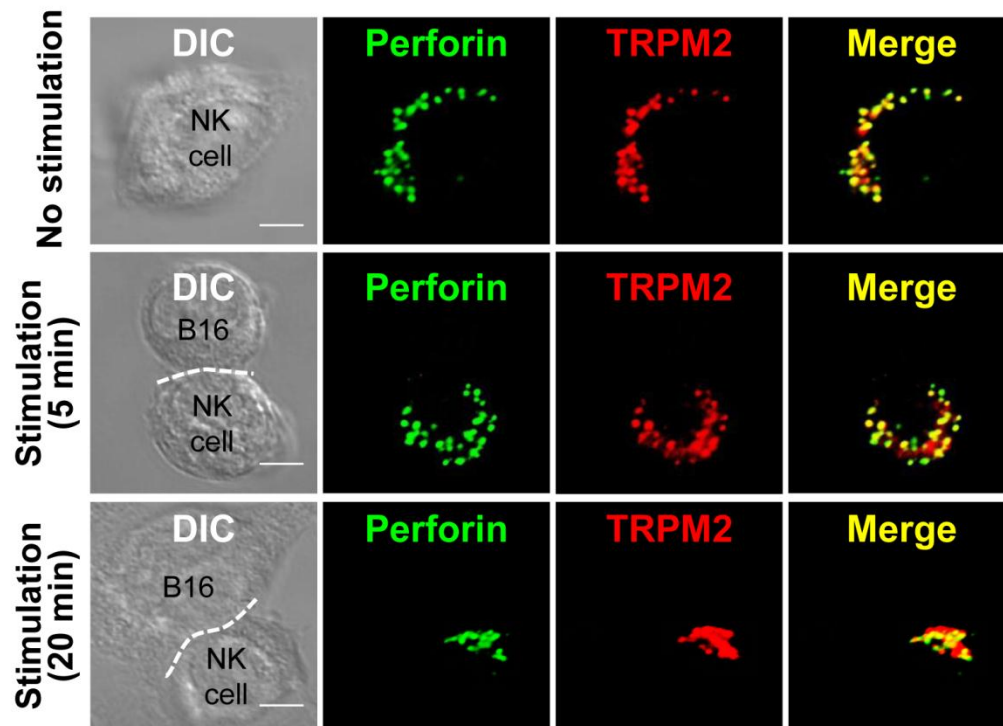
**ADP-ribose and TRPM2-mediated Ca<sup>2+</sup> signaling is essential for cytolytic degranulation and antitumor activity of natural killer cells**

So-Young Rah,<sup>1,2\*</sup> Jae-Yong Kwak,<sup>2,4,5\*</sup> Yun-Jo Chung,<sup>2</sup> and Uh-Hyun Kim<sup>1-3</sup>

<sup>1</sup>Department of Biochemistry, <sup>2</sup>National Creative Research Laboratory for Ca<sup>2+</sup> signaling Network, <sup>3</sup>Institute of Cardiovascular Research, <sup>4</sup>Division of Hematology and Oncology, Department of Internal Medicine, and <sup>5</sup>Research Institute of Clinical Medicine, Chonbuk National University Medical School, Jeonju, Republic of Korea

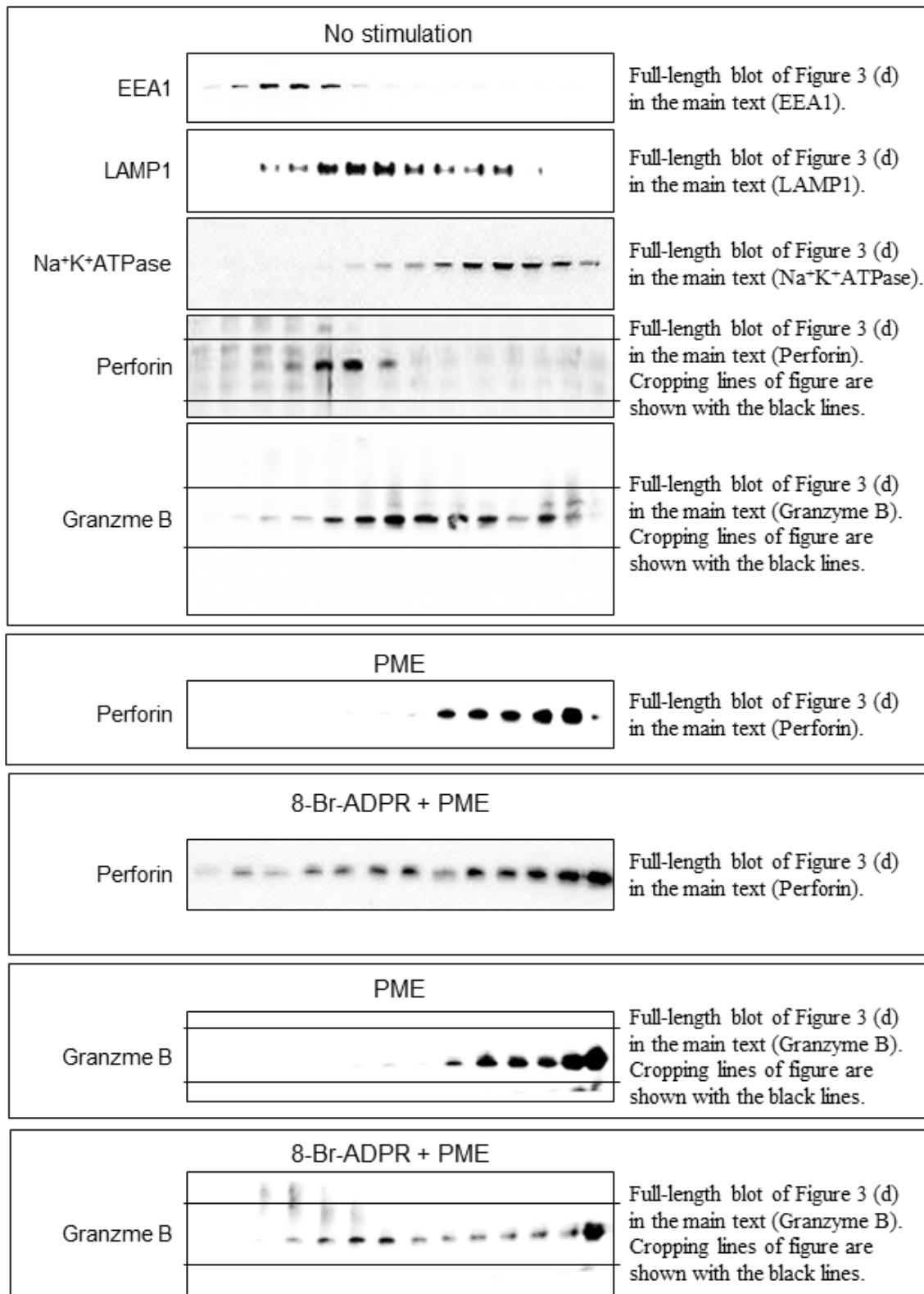
\* These authors contributed equally to this study.

## Supplementary Figure 1

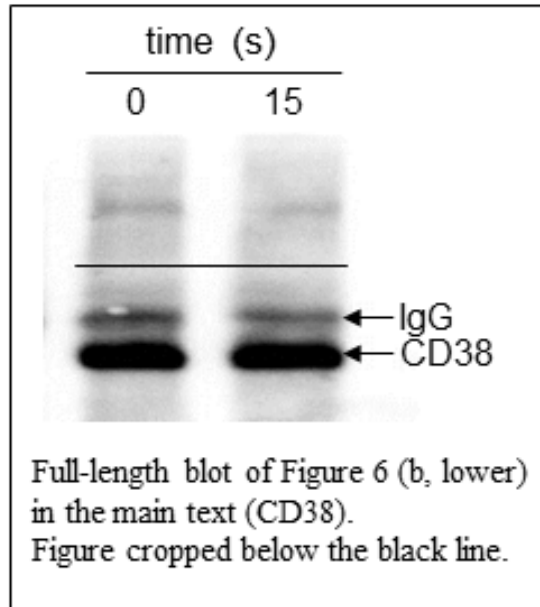
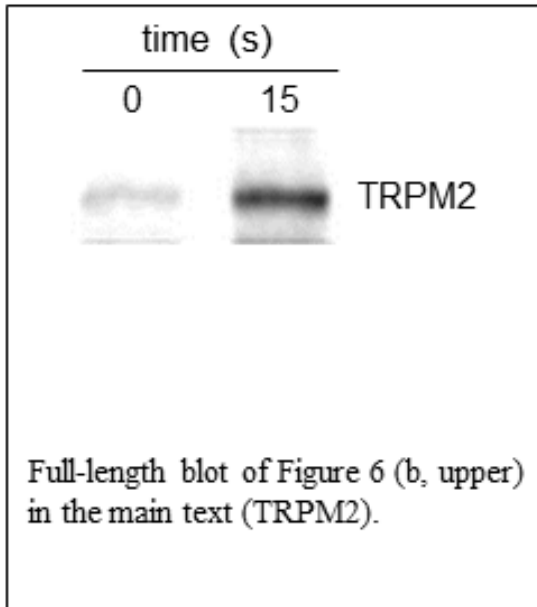


**Figure S1.** Tumor cell induces translocation of perforin and TRPM2 towards immunological synapses in NK cell. NK cells were added to B16F10 target cells at 1:1 ratio at 37°C for indicated time and then stained with perforin and TRPM2. The dashed line indicates the immunological synapse. (Scale bar, 5  $\mu$ m). All images were representative of at least three independent experiments.

## Supplementary Figure 2



### Supplementary Figure 3



## Supplementary Figure 4

