

gcctcagctttaccagctttggtcaaagaataactcaagttcttcaaacctcatcactcggctctctctatccataactggtggt
 tttttgtttctccttgttgaacgaatctgacatttggaaatgtcgatacagaatctcgacatcctgatctccgtgcggaacaa
 tctccagggtttgttcaggagagaatgcataaccacatcaaacagaccatgtaagtcgcggaagcatattcttctgaaagtt
 -1700 tagtatacaataagagaaggcacatttcatattctctctaacagaaatgtggatttatgcagcatgagcgcagtgacacaagctcc
 caaaaatcttgatagtcocgcagaaatactccggacagttcgtactgggaaaggtgcttcagtagaaagcatgatggctggatctc
 gagcaagccctgaaactattaaccgccaggctgctgatattaatgtcacgccattctattctggttaaagcttctctattttat
 ccagctcttcagatcactagcttggattgtggaatatttagcgttaagttatttgattttcatgggaattacaggagatgatgtgag
 atccatgcctagtagacaccatccgcacgtggagcagcttcaattaacaacatagagatcagctctaaaagggttaagaacacatcta
 -1275 agtttctctgatactaaaaccaatagtaacttacaacaagtttccattggaagcagatcactaaatcttctctctgcttaccaa
 atcagtcgcatgcccaatagaaaaagaccaaattctcaccagaagaggactcgaaccagtgggcgaagagagaccgtgggagc
 accgtgaaatagagtttgagttttcaatgtttacctgaaaaacgcttcacagccgataaaggtagaagtttttaattgtcttttga
 tctatacaactttcaaaaacaccatcttacaaccttaacgtgcttctttttcacagaaatactatttgaactgcatctaca
 cagactcaaaagccagtggtgcaatcaatcagacgagatgataacagatagcatcaaaaggtaagagattcaaaattatctgcaa
 -850 atctataactgagtaacaatgatgagatctataaacgaaacacagtcacctgaagacacactttgaaacacctggagctcctca
 agtggaatctcttaacaagctcgctgttggaaatggacagaaacgctgcagctaaactcttctccaatcctgtggtactaacttc
 tacttcaacttaattcactttctttgagcataaaaaacctgactatgattattgtttatatgtccagtggttagctactcggg
 agtcatcaaggtaaaccaagcagagccttatggggacattctcattgcaagaggaccaacatgtaaggtttgattcttaatta
 taaaagattctggtgaaccgattatccatagttgttttgcctttcattctagcagagagagttcgttagacttttttaagttat
 -425 aaagagcaagcgttctttaccaaaatctctctgttggctctttgttataatggttattagtacctcacaatcacaacatccta
 gctttgtccgaaaaactctgaaactaattttacattattctataaatttaagtttttactcgcataatgtgagctctcttagaa
 gatgtattgaacagagcataaaacaaaacaatagtttaataataactccgttgacaaaagaaaatggtggcagtcacgtaataagcc
 gcaactgccccatttcatacaatacatgtaatactctcataaattagtcgctcacacgtttcatacaatttgcataatttctcaa
 aaaattaaactaattacacaatcaaataccagcctctatatgtttctataataacgcatatttcttaccctggaatcacacatca
 -43 agaagaagaagaagtttaagaagcagagtgataacaagtaac

At5g05500 - AtPRPL1

- | | |
|--|---|
|  ABRE-like sequence |  Pollen-specific element |
|  Cytokinin-responsive element |  ABA-responsive element |
|  Gibberellin-responsive element (<i>Oryza sativa</i>) |  Right part of root hair specific cis-elements |

Fig. S1

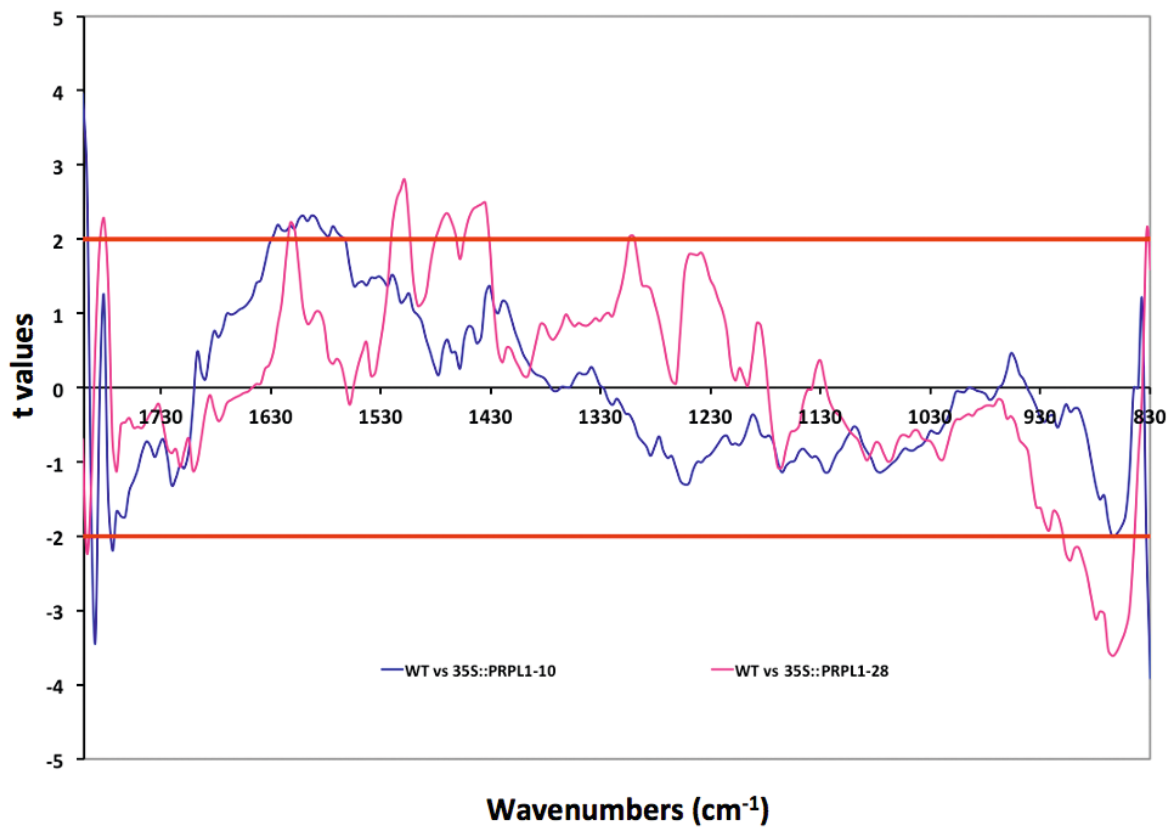


Fig. S2