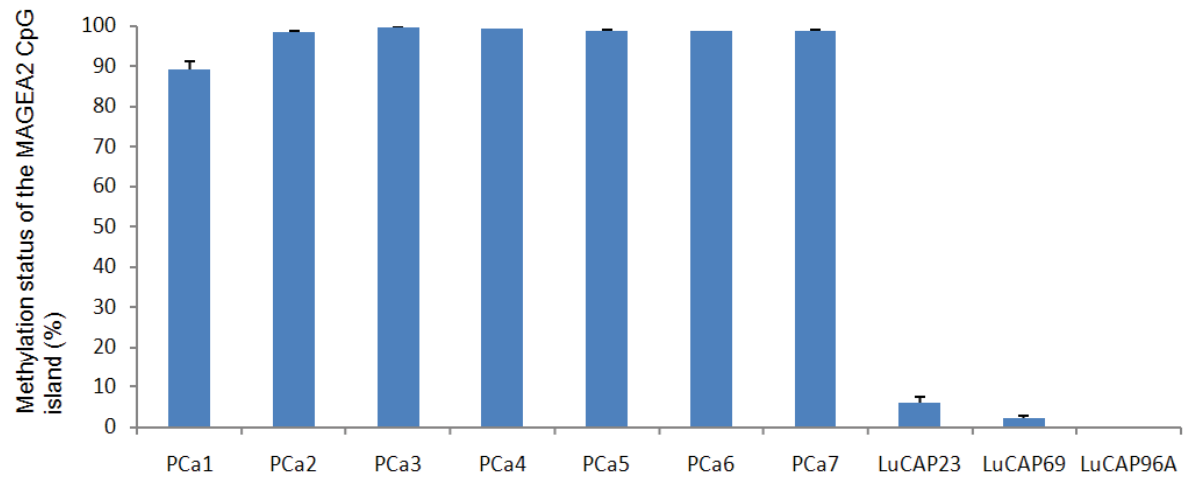
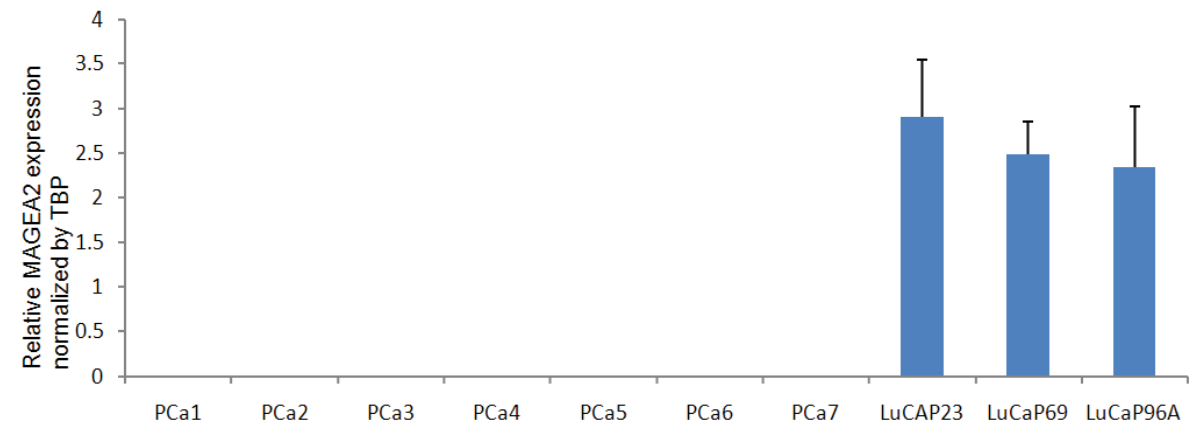


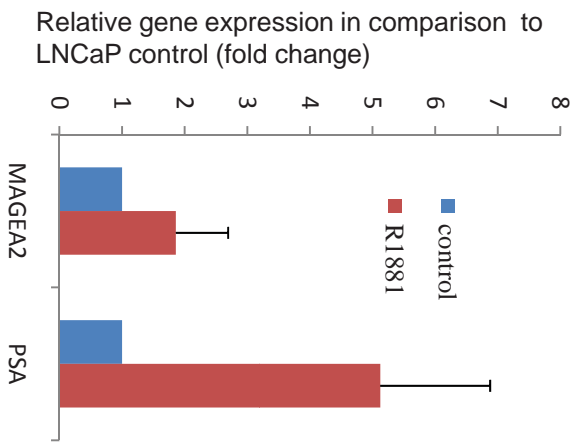
Supplemental Fig. 1

Age	Race	T-stage	Pre-PSA	RRP Gleason	Prostate Weight	Status
72	Caucasian	T2a	2.5	8	46.7	Died- unknown cause
56	African-American	T2b	11.6	6	57	
56	Caucasian	T1c	6.5	8	44.9	No Recurrence
64	Caucasian	T2a	7.8	7	96.09	Increase in PSA (>0.2)
49	African-American	T1c	4.59	6	35.7	No Recurrence
61	Caucasian	T2a	4.9	7	79.5	Distant Mets
66	Caucasian	T2b	4.5	6	60.2	Increase in PSA (>0.2)
60	Caucasian	T2b	6.19	9	37.9	Increase in PSA (>0.2)
45	Caucasian	T1c	6	7	44	Local Recurrence and Distant Mets
56	Caucasian	T1c	4.3	6	40	No Recurrence

Supplemental Table 1



Supplemental Fig. 3



Supplemental Fig. 2

LuCaP #	Location of the Tumor	Histology	Patient Androgen Status	Xenograft Androgen Status	PSA Producer
23.1	Lymph node	Adenocarcinoma	Castration-resistant	Dependent	Yes
35	Inguinal LN	Adenocarcinoma	Castration-resistant	Dependent	Yes
49	Omental fat met	Small cell carcinoma	Hormone-naive	Independent	No
58	Lymph node	Adenocarcinoma	Hormone-naive	Dependent	Yes
69	Bowel met	Adenocarcinoma	Castration-resistant	Dependent	Yes
70	Liver met	Adenocarcinoma	Castration-resistant	Dependent	Yes
73	Prostate	Adenocarcinoma	Castration-resistant	Dependent	Yes
77	Femur met	Adenocarcinoma	Castration-resistant	Dependent	Yes
86.2	Bladder met	Adenocarcinoma	Castration-resistant	NA	Yes
93	Prostate from TURP	Small cell carcinoma	Hormone-naive	Independent	No
96	Prostate from TURP	Adenocarcinoma	Castration-resistant	Dependent	Yes
105	Rib mets R5, L5	Adenocarcinoma	Castration-resistant	Dependent	Yes
115	Lymph node	Adenocarcinoma	Hormone-naive	NA	Yes

Supplemental Table 2