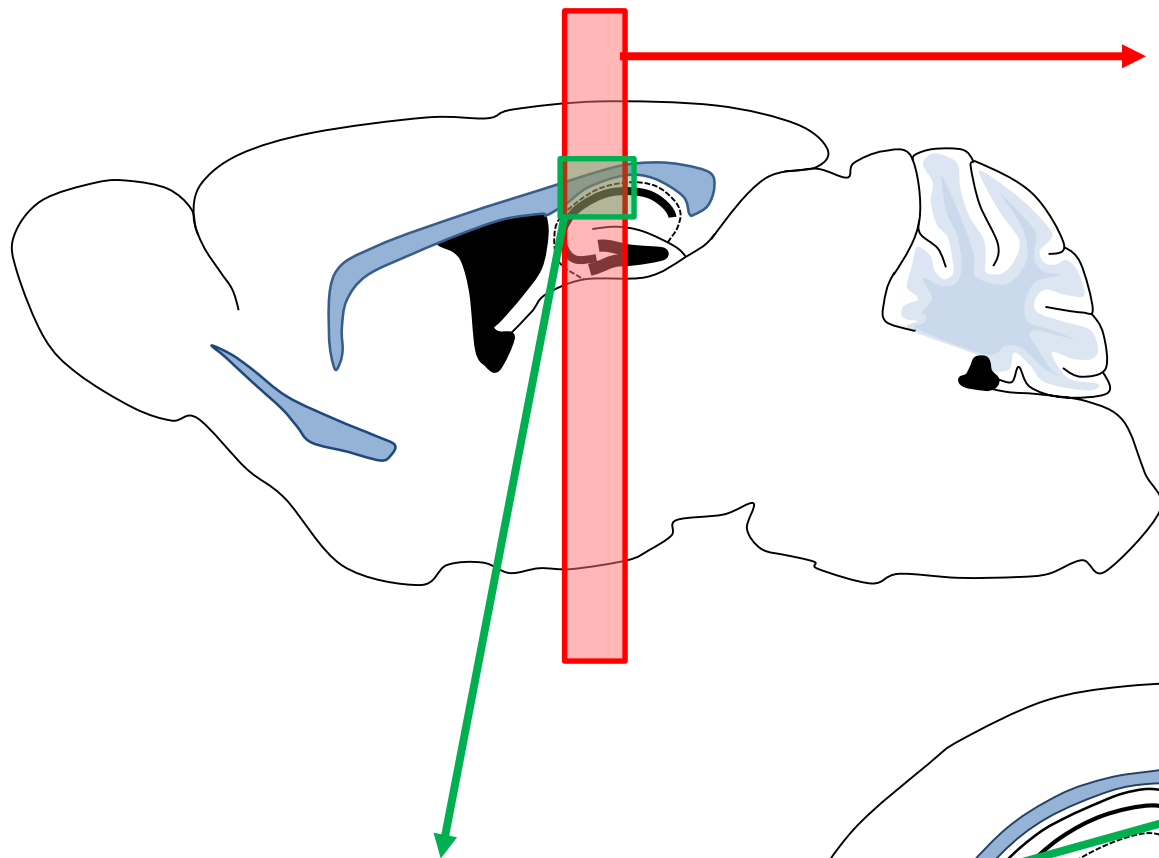


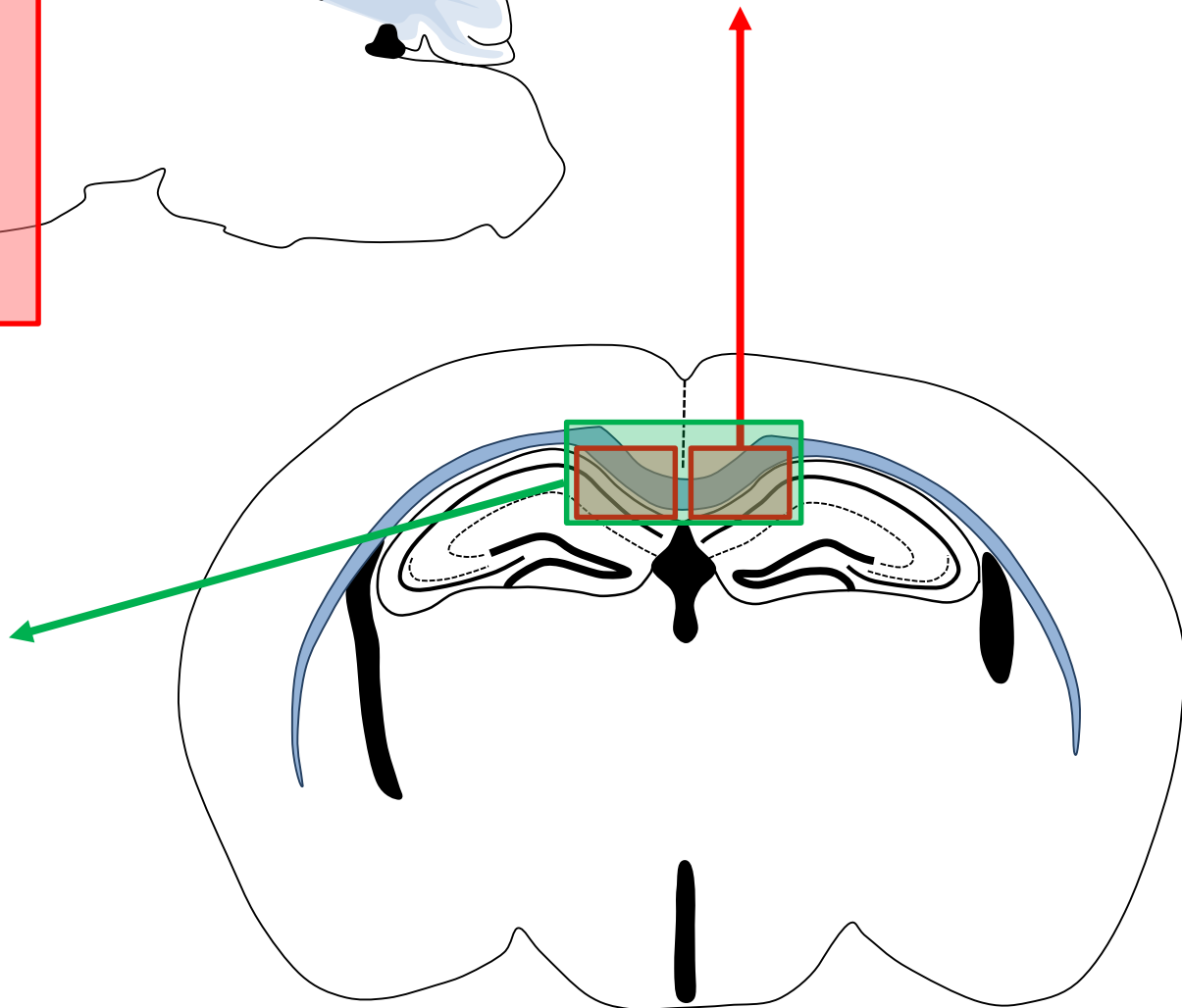
Supplementary file S2

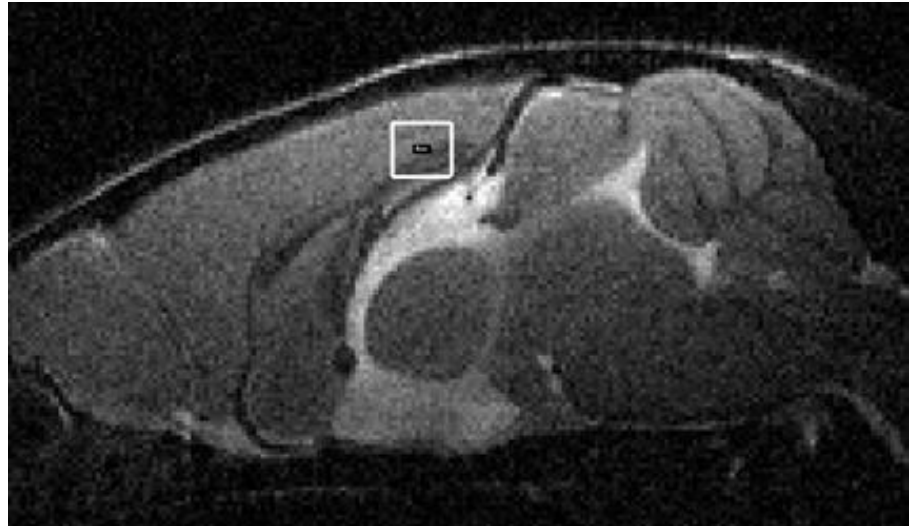
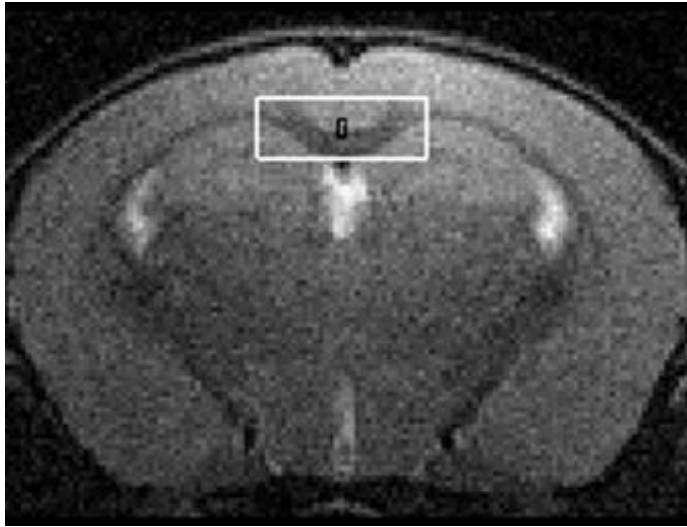
Anatomical location of collected slides and pictures taken, as well as the placement of the ^1H -MRS voxel of interest.



Histological slides were collected at the level of the splenium. Two pictures covering the corpus callosum were taken per slide.

Placement of the ¹H-MRS voxel of interest was done such that it corresponded to histological region of interest.





Axial (left) and sagittal (right) T2 RARE images of a mouse brain showing the exact anatomical placement of the VOI (white square) for ¹H-MRS.