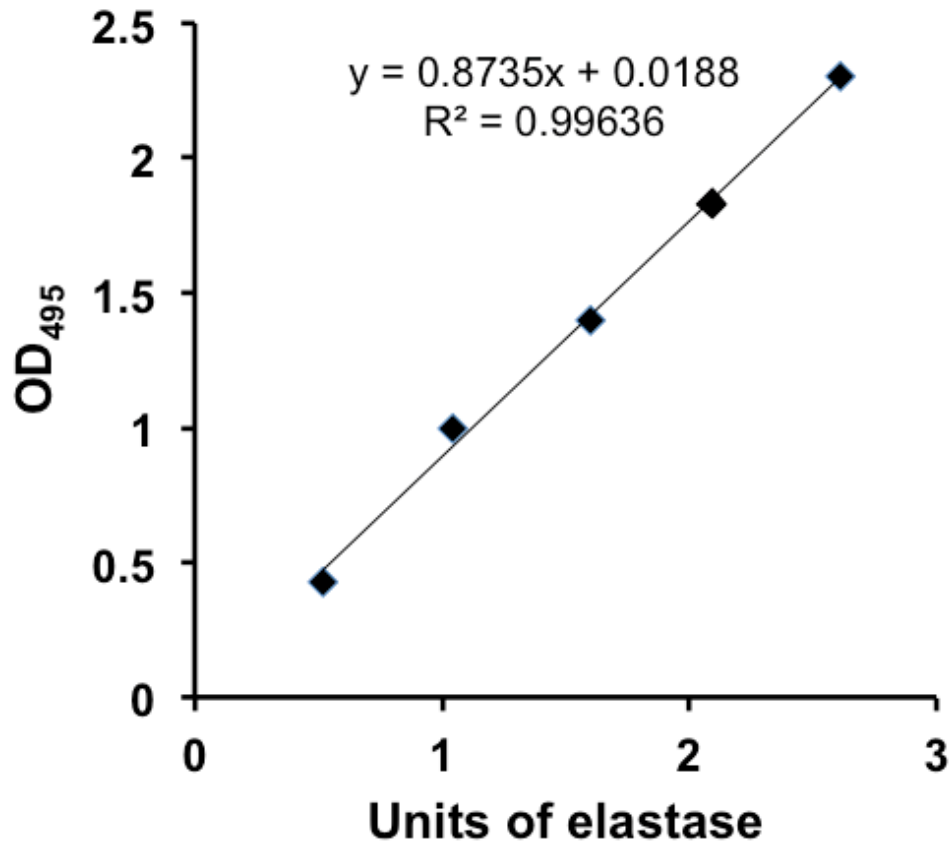


Global Regulator MorA affects Virulence-associated Protease Secretion in *Pseudomonas aeruginosa* PAO1

Supporting Information



S1 Figure. Standard curve for elastase activity. Activity measured with increasing units of *Pseudomonas aeruginosa* elastase on elastin congo-red (Sigma). Reaction buffer without elastase was used as blank. At end of 6 hr incubation, the absorbance of the supernatant containing cleaved congo-red was measured at 495nm.