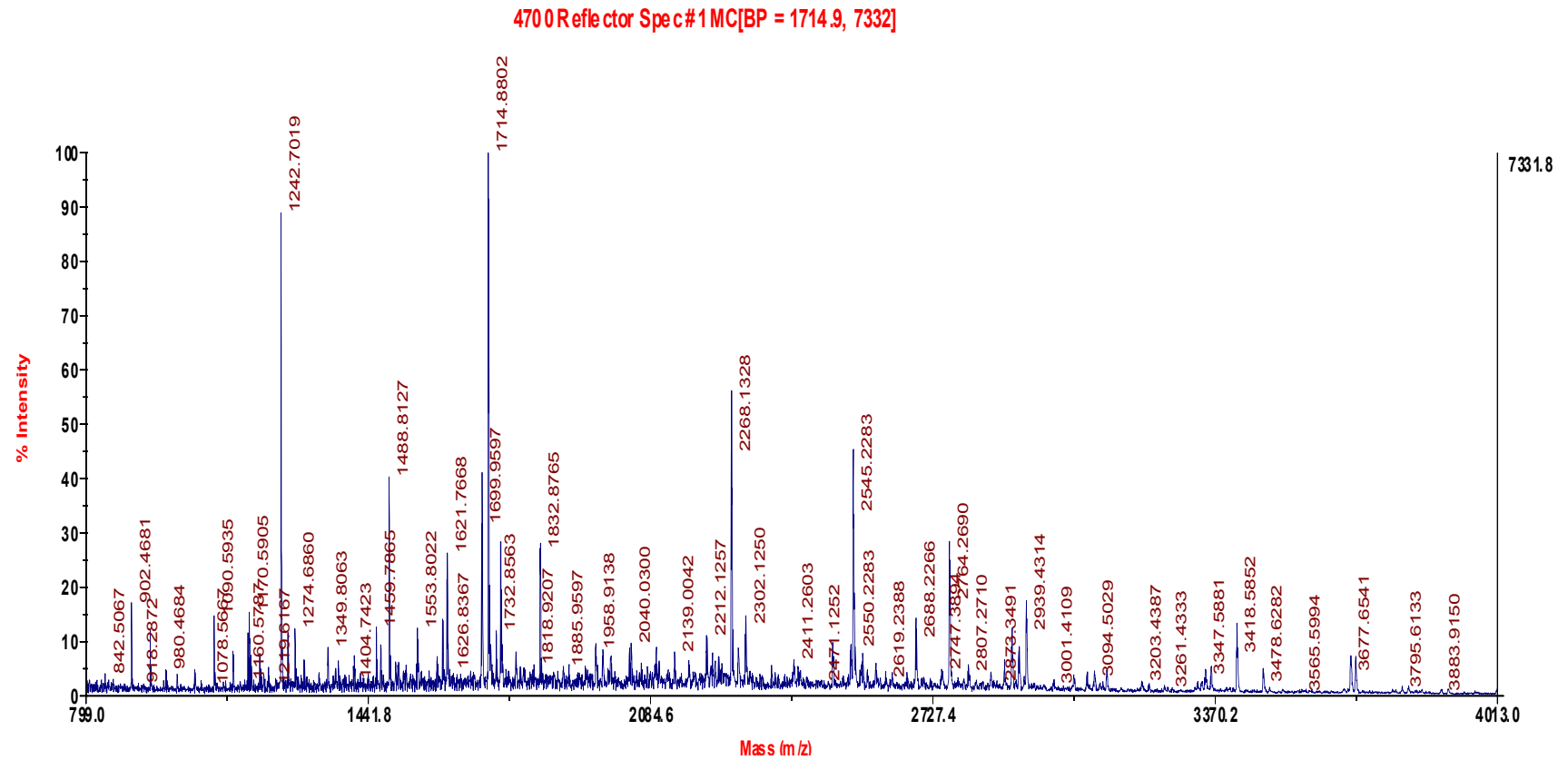


Global Regulator MorA affects Virulence-associated Protease Secretion in *Pseudomonas aeruginosa* PAO1

Supporting Information

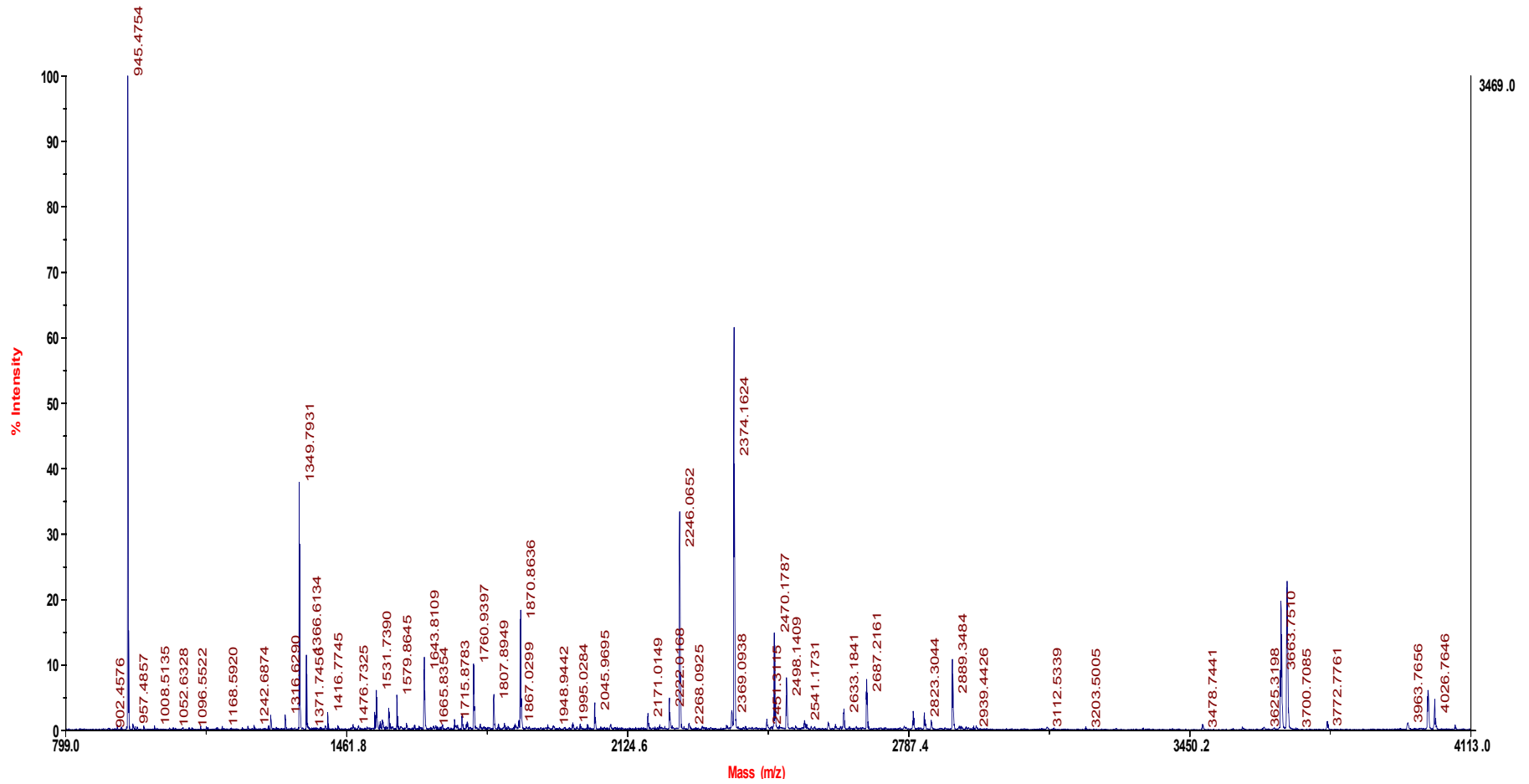
S2 Figure. MALDI-ToF-ToF spectra of secreted proteins affected by MorA

A. PA0752



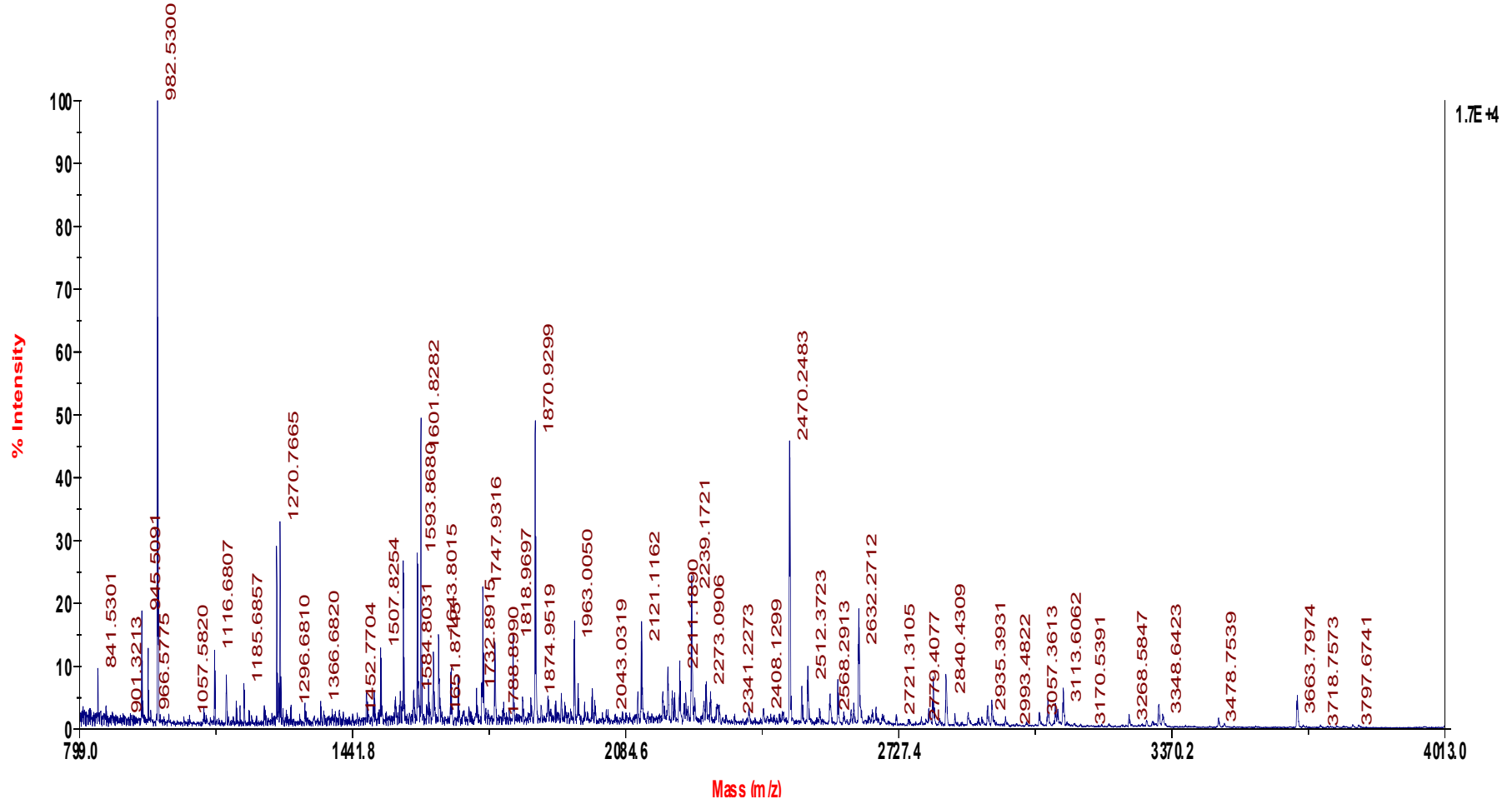
B. Probable aminopeptidase

4700 Reflector Spec #1 MC[BP = 945.5,3469]



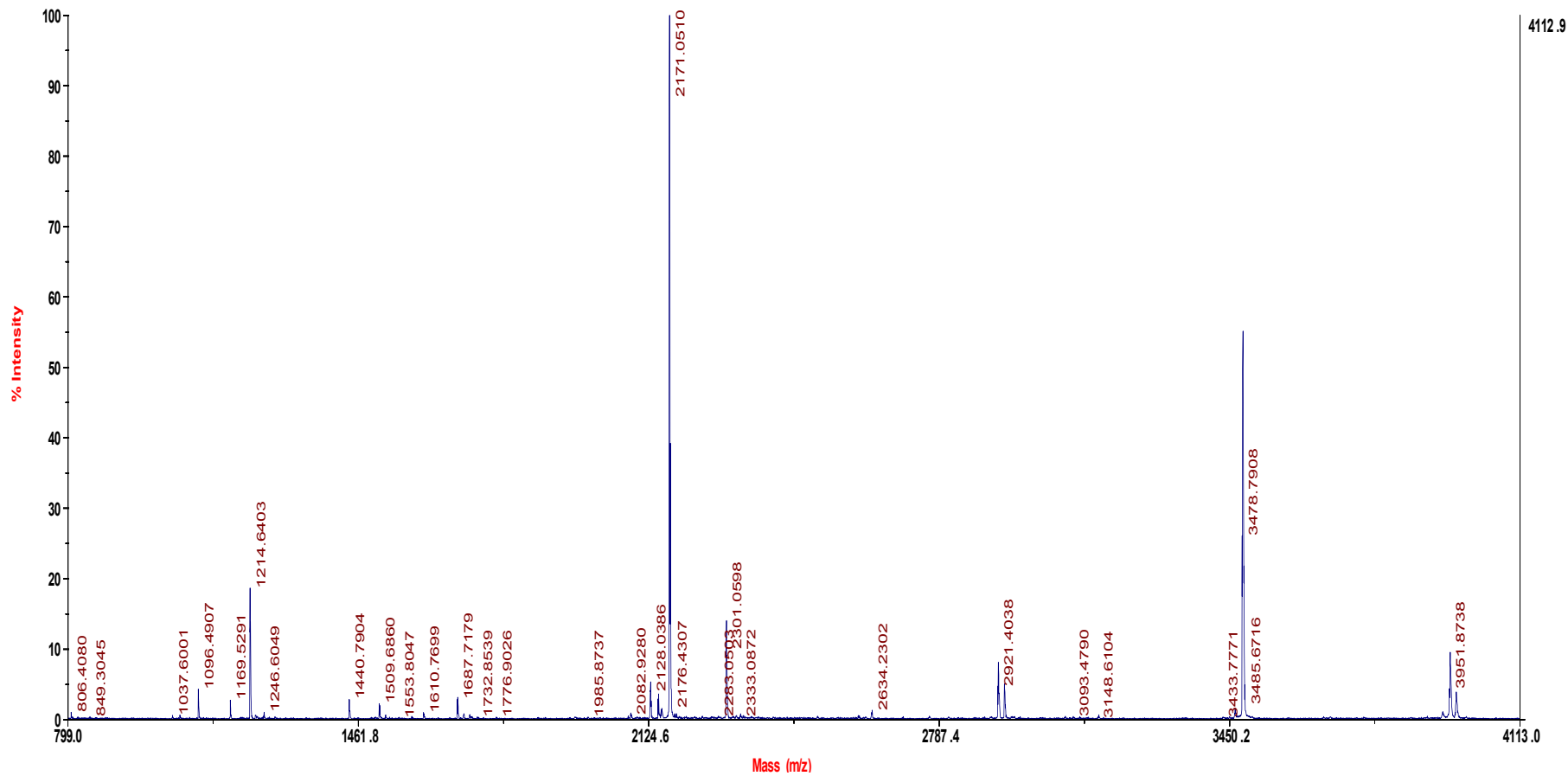
C. Alkaline metalloproteinase precursor AprA

4700 Reflector Spec#1 MC[BP = 982.5, 16593]



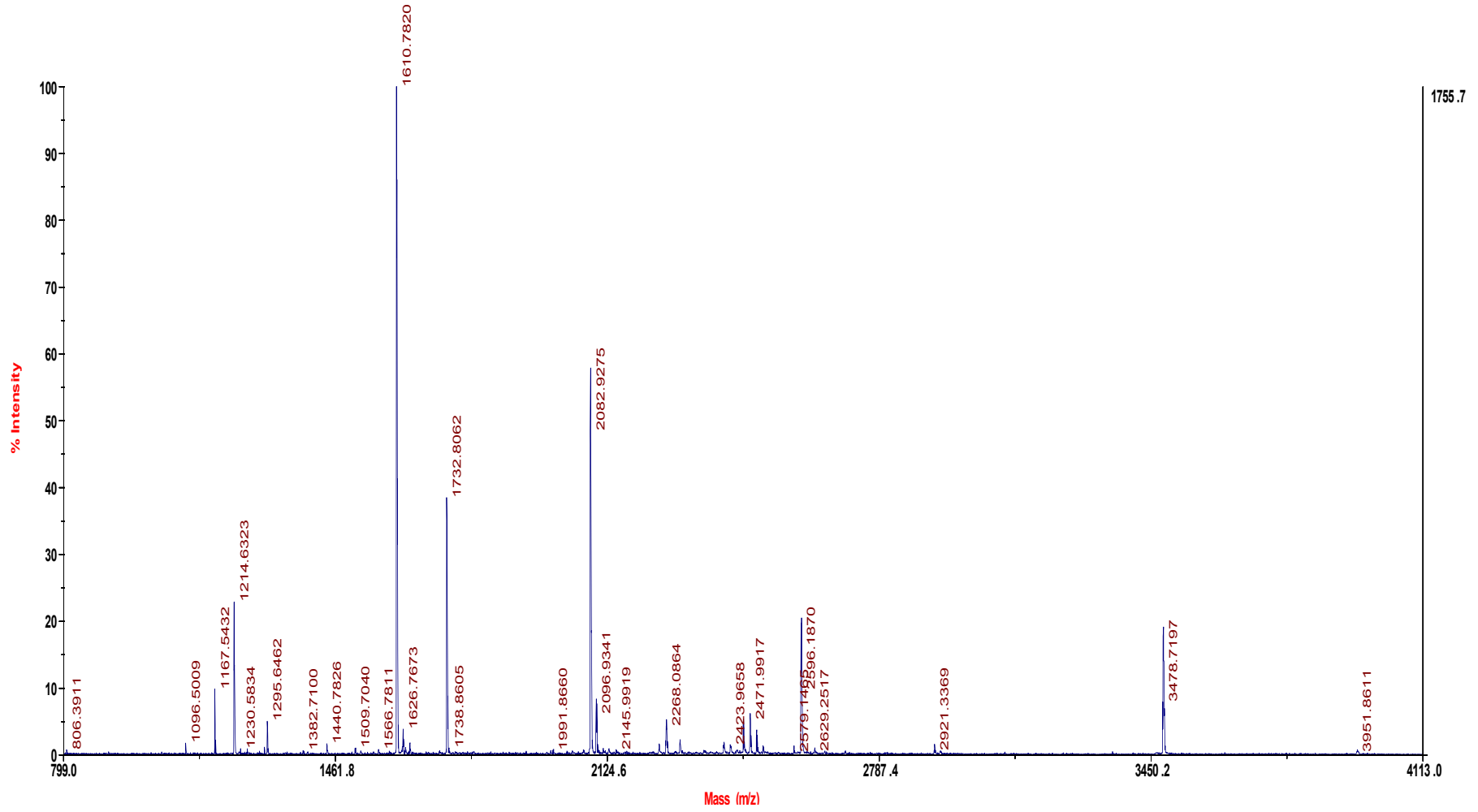
D. Chitin binding protein CbpD

4700 Reflector Spec #1 MC[BP = 2172.0, 4113]



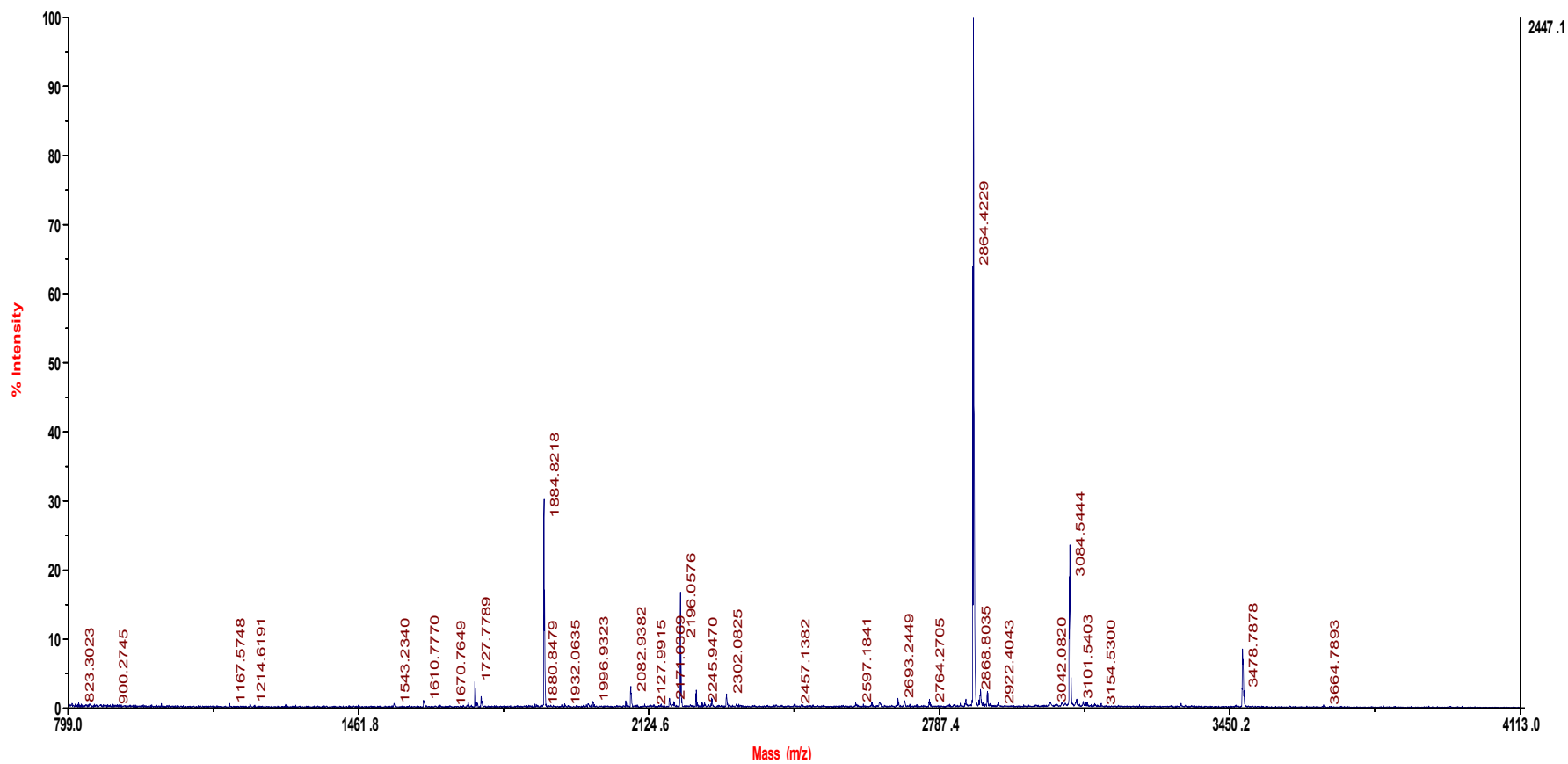
E. Elastase LasB

4700 Reflector Spec #1 MC[BP = 1610.8, 1756]



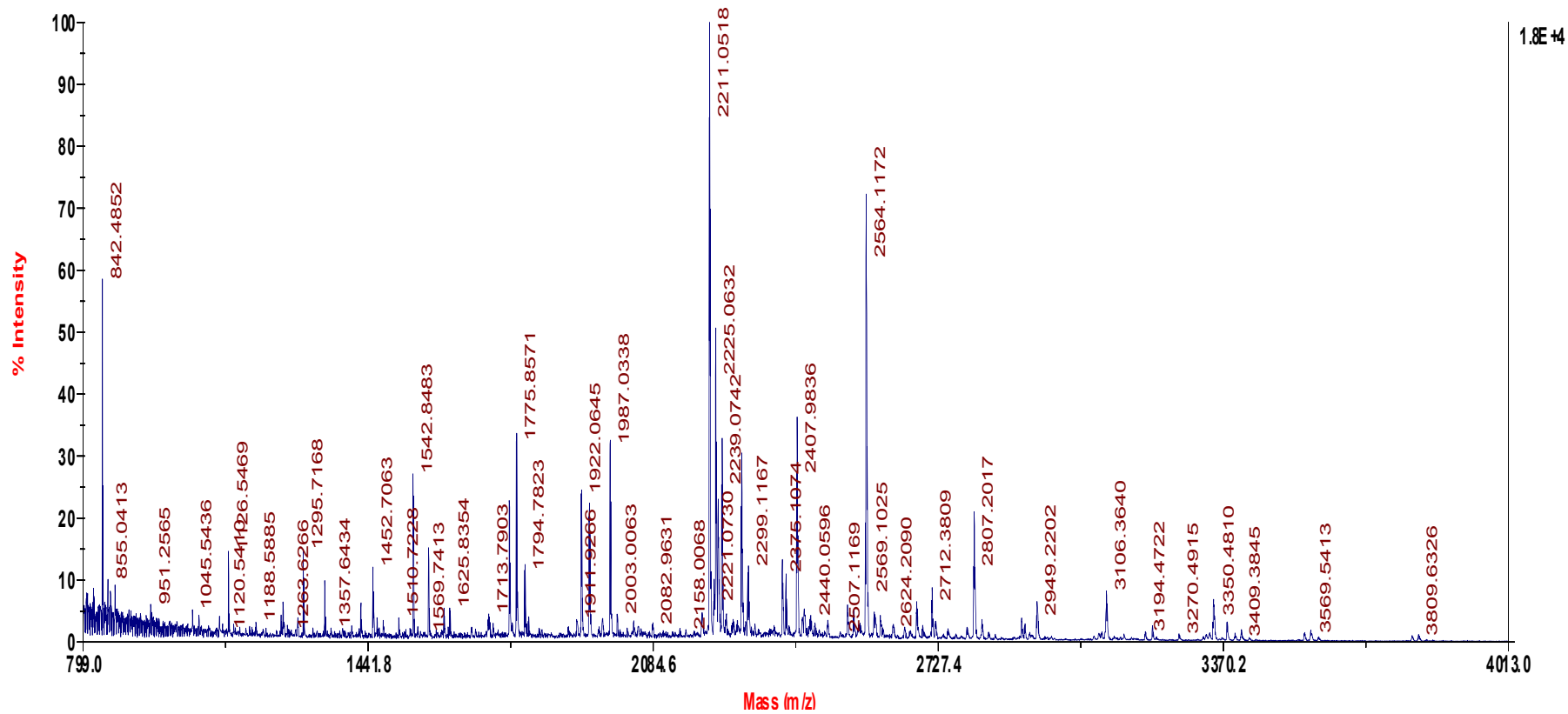
F. PvdS-regulated endoprotease; lysyl class PrpL

4700 Reflector Spec #1 MC[BP = 2865.4, 2447]



G. Flagellar capping protein FliD

4700 Reflector Spec #1 MC[BP = 2212.0, 18233]



H. Elastase LsaA

4700 Reflector Spec #1 MC[BP = 3484.5, 1460]

