

Additional File 1

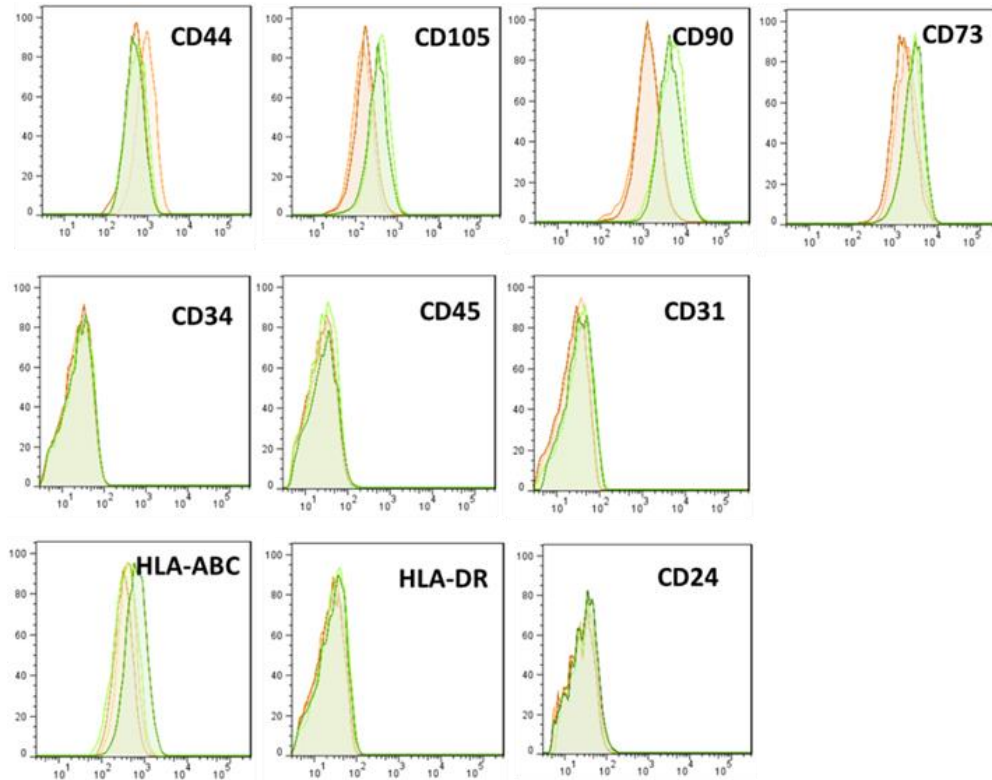


Figure S1. MenSCs display a stable expression of different stem markers during long-term culture. To evaluate whether in vitro expansion influence the immunophenotype stability of MenSCs, cells were maintained in long-term culture and analyzed comparatively at early (P3-6) and late (P12-14) culture passages. FACS analysis showed that MenSCs (orange filled histograms) and BM-MSCs (green filled histograms) at early (soft colors) and late (dark colors) culture passages display the same pattern expression of stem cells-like phenotypic markers.