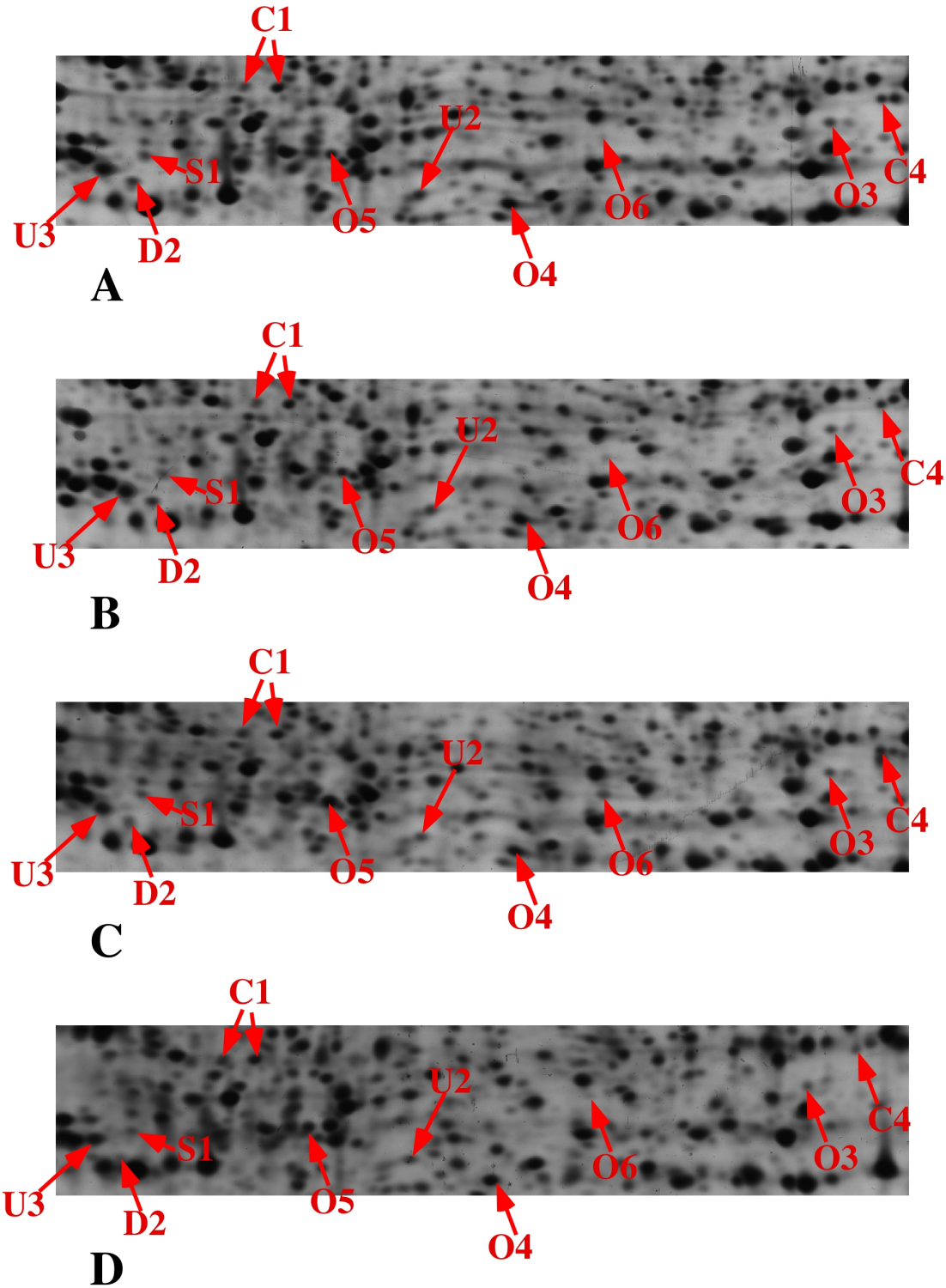


Supporting Information Figure S2 : detail of the 2D gels with highlighted spots part 1



- A: gel obtained from control cells
- B: gel obtained from cells treated with titanium oxide (100µg/ml, 24 hours)
- C: gel obtained from cells treated with copper oxide (10µg/ml, 24 hours)
- D: gel obtained from cells treated with copper ions (125µM, 24 hours)

The arrows point to spots that show reproducible and statistically significant changes between the control and NP-treated cells ($p \leq 0.05$). Spot numbering according to Table 3.