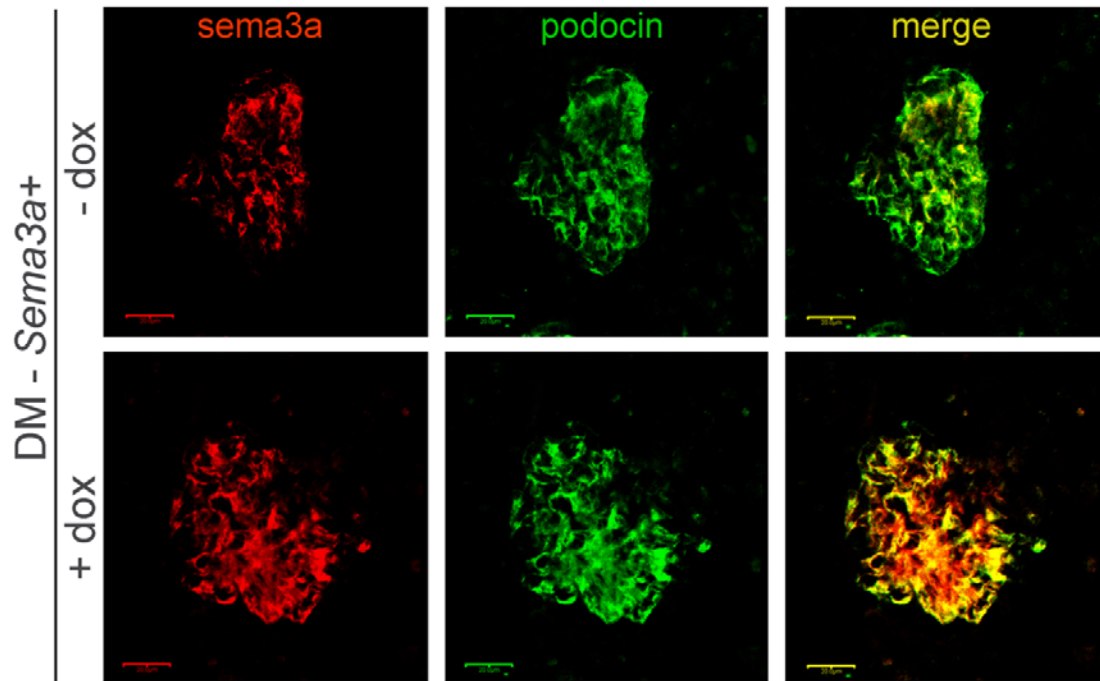


SUPPLEMENTARY DATA

Supplementary Figure 1. Podocyte *sema3a* expression is increased in diabetic mice. IHC: immunoreactive *sema3a* (red) and podocin (green) co-localization (merge, yellow) indicates that *sema3a* is expressed in podocytes. Clearly, *sema3a* expression is increased in glomeruli from diabetic mice with *sema3a* gain-of-function (bottom panel), as compared to control diabetic mice (top panel), whereas podocin expression is not different.



Supplementary Figure 2. Blood glucose (A) and body weight (B) at the completion of the study period are similar in all diabetic experimental groups. Data are expressed as mean+SEM, n.s.= not significantly different.

