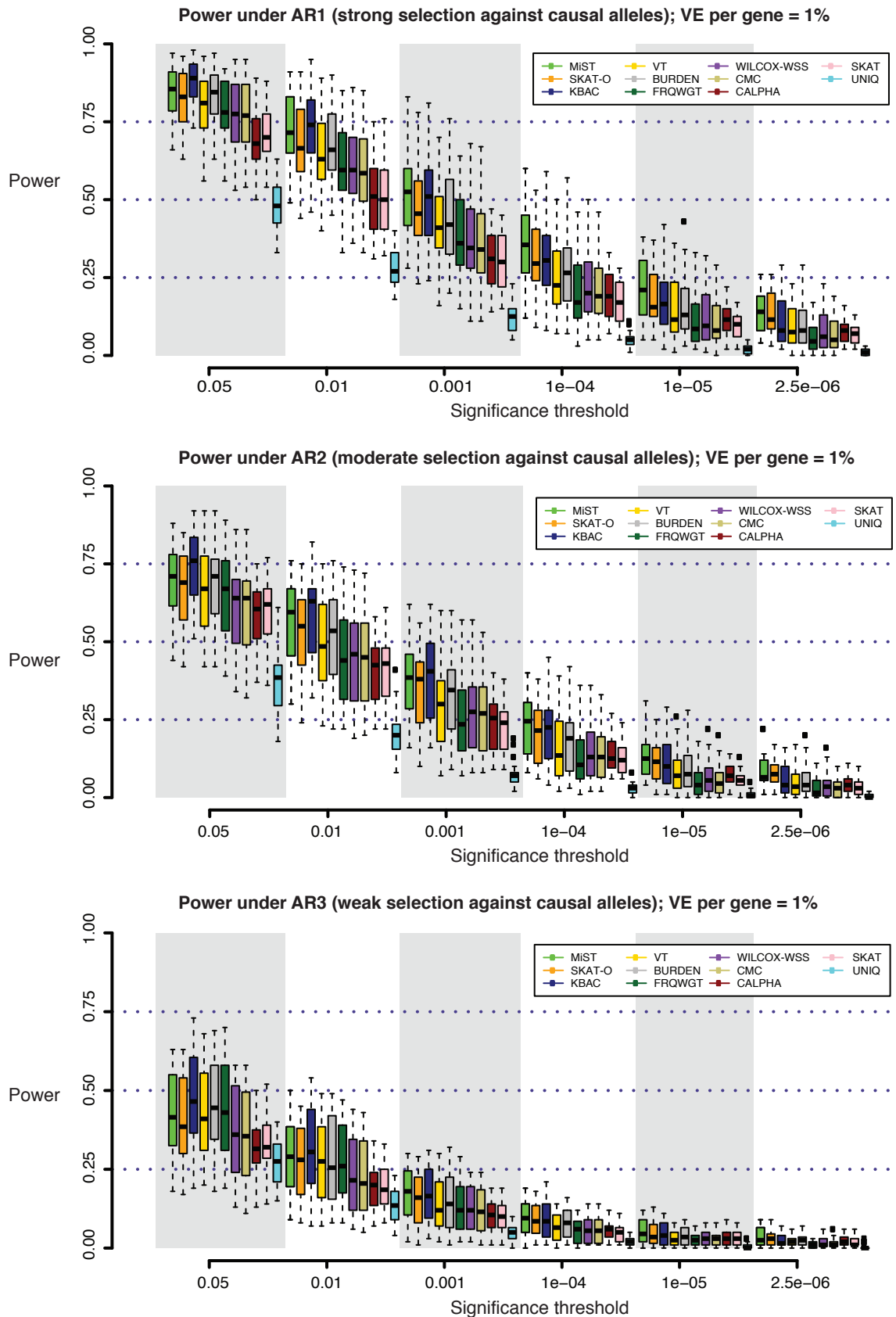


S7 Figure: Power of gene-based tests in 3K samples, as a function of significance threshold, under each simulated architecture.

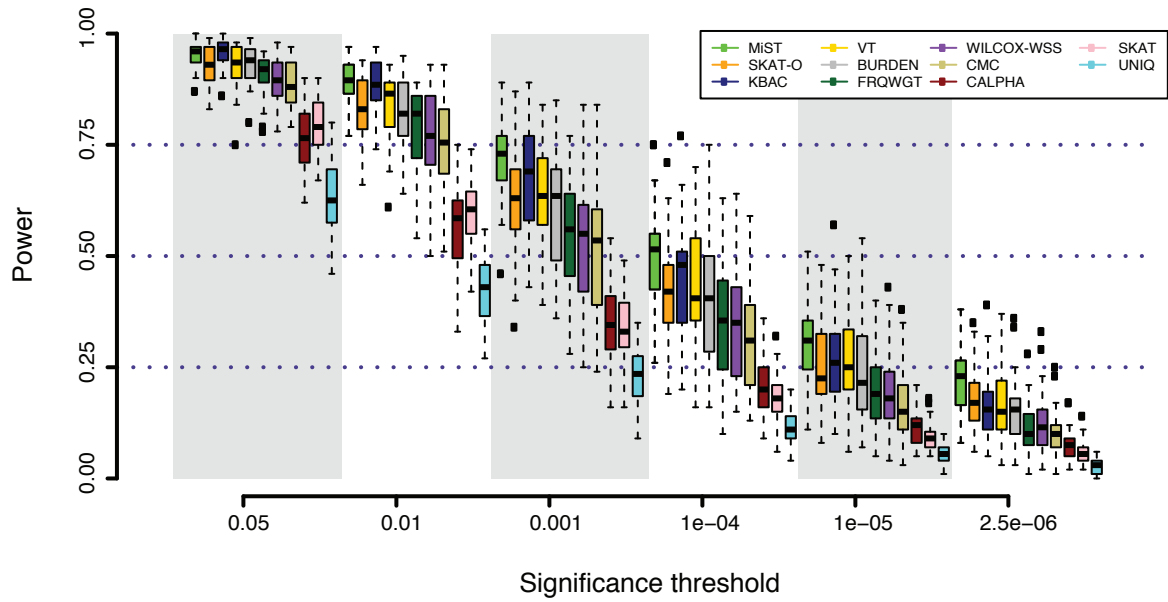
A



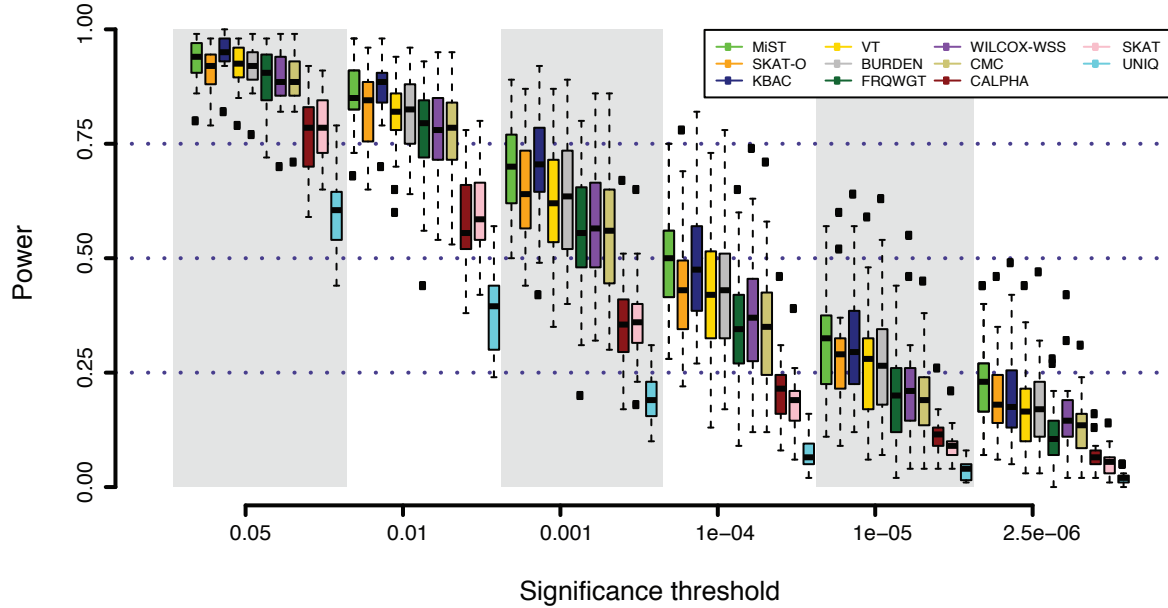
S7 Figure: Power of gene-based tests in 3K samples, as a function of significance threshold, under each simulated architecture (continued).

B

Power under AR4 (strong selection; same as AR1, but only MAF < 1% causal); VE per gene = 1%



Power under AR5 (moderate selection; same as AR2, but only MAF < 1% causal); VE per gene = 1%



S7 Figure: Power of gene-based tests in 3K samples, as a function of significance threshold, under each simulated architecture (continued).

C

