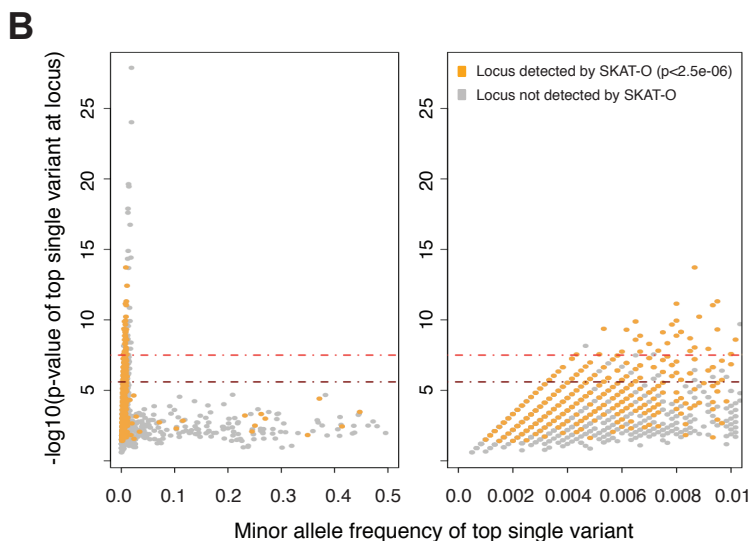
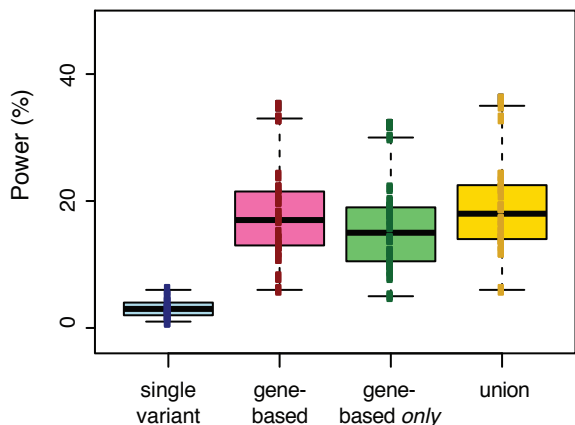
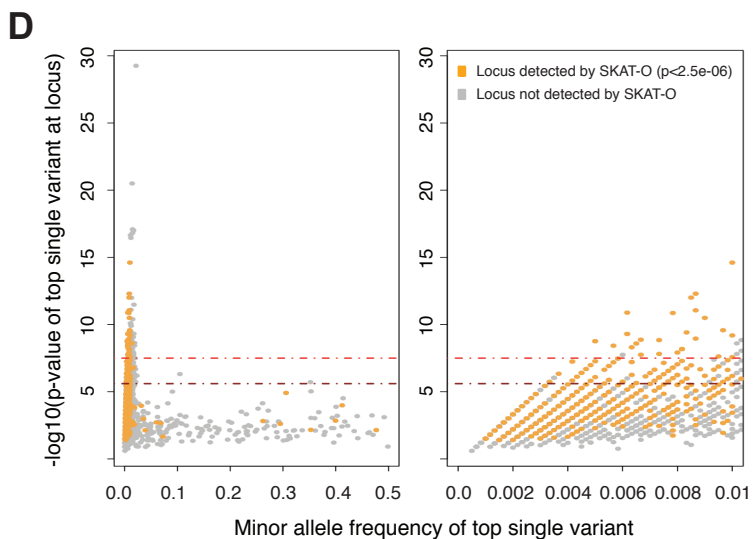
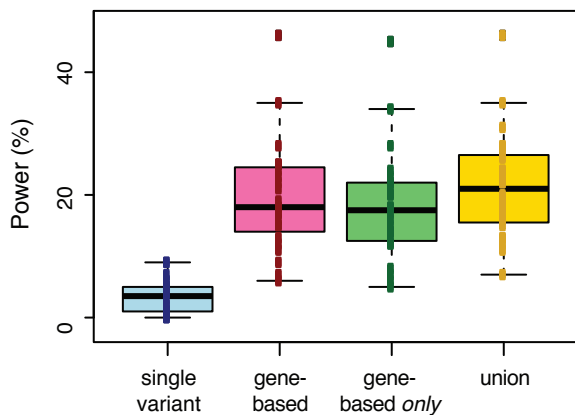


**S10 Figure: Power of gene-based method (SKAT-O), as compared to single variant association testing under AR4, AR5, and AR6.**

**A AR4 (strong selection; only MAF<1% causal)**  
VE per gene = 1%, gene-based method = SKAT-O



**C AR5 (moderate selection; only MAF<1% causal)**  
VE per gene = 1%, gene-based method = SKAT-O



**E AR6 (moderate selection; bidirectional effects)**  
VE per gene = 1%, gene-based method = SKAT-O

