

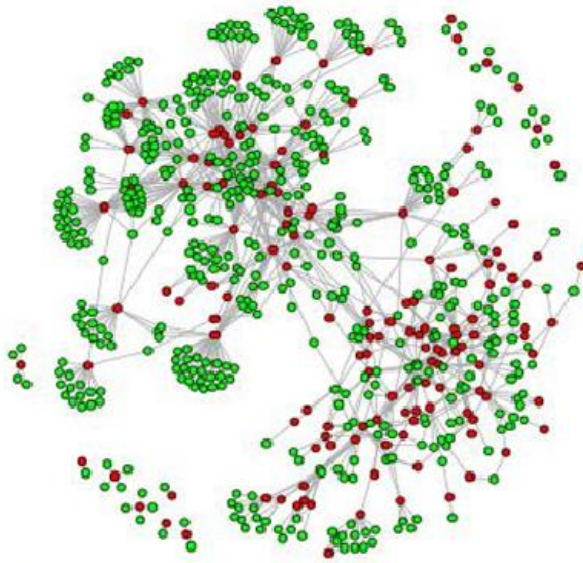
S4_File

Pathway-gene bipartite graph analysis

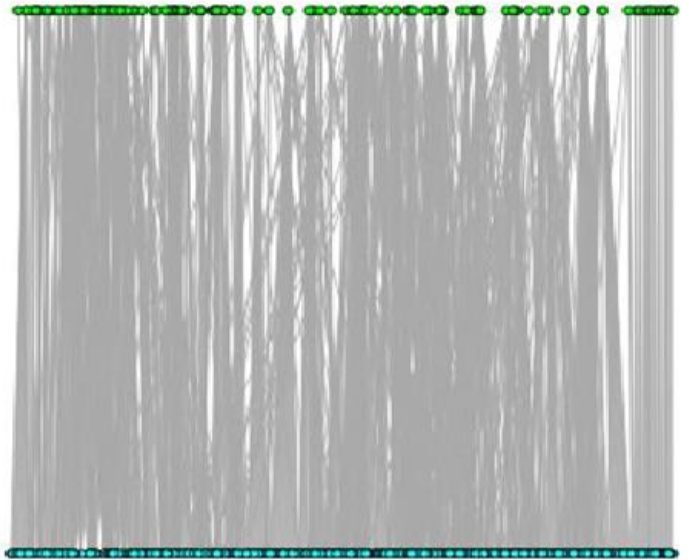
Bipartite graph analysis results of 11 non-BRCA1/BRCA2 breast cancer patients (BC1 to BC11) are represented here. The betweenness and degree centrality pathways and genes are also shown. For each patient, there are four graphs:

- (a) Bipartite graph plot of vertices and their connections where red dots are the pathways and green dots are genes.
- (b) Bipartite graph in layered format (two layers) where the upper layer represents pathways and the lower layer representing genes along with their connections and interactions.
- (c) Histogram of pathway degree distribution.
- (d) Histogram of gene degree distribution.

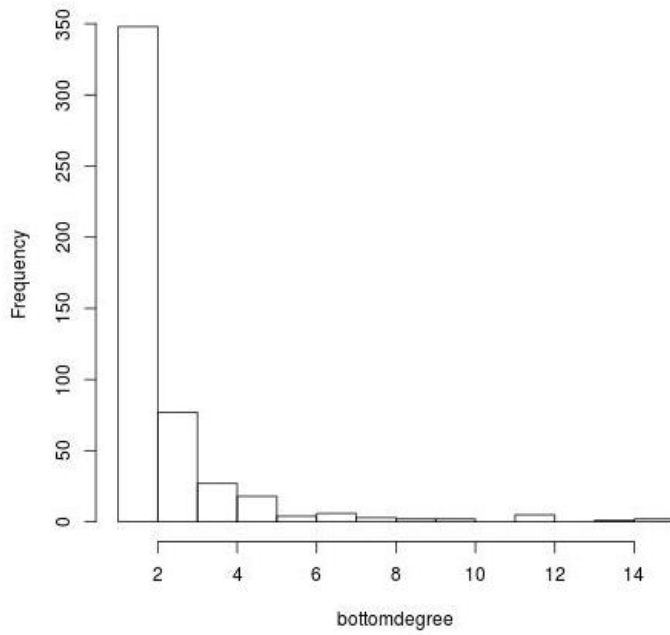
ERR166303 (BC1)



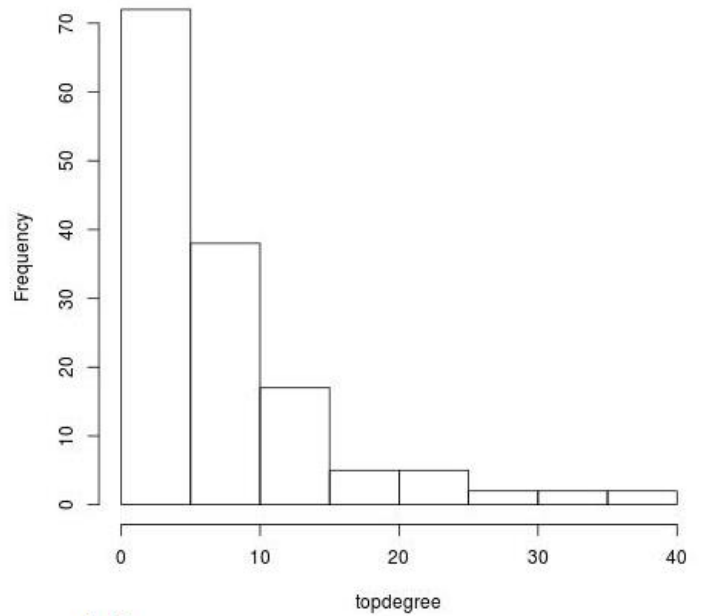
(a) Bipartite Pathway-Gene Interaction of BC1



(b) Pathway-Gene Bipartite Graph

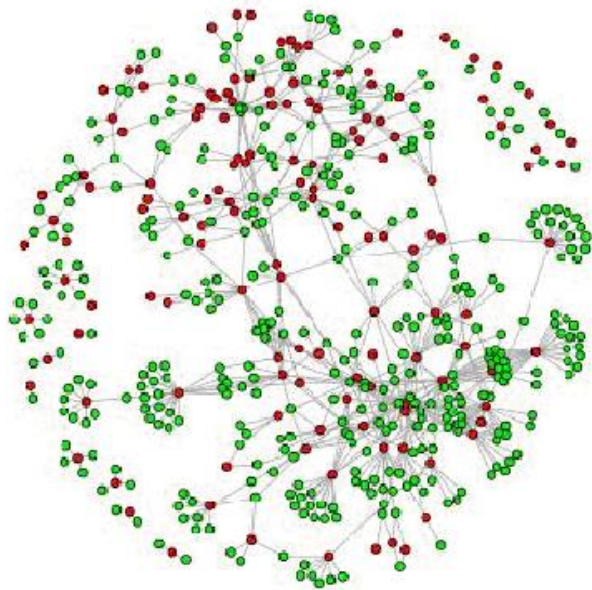


(c) Bigraph Gene Degree Distribution for BC1

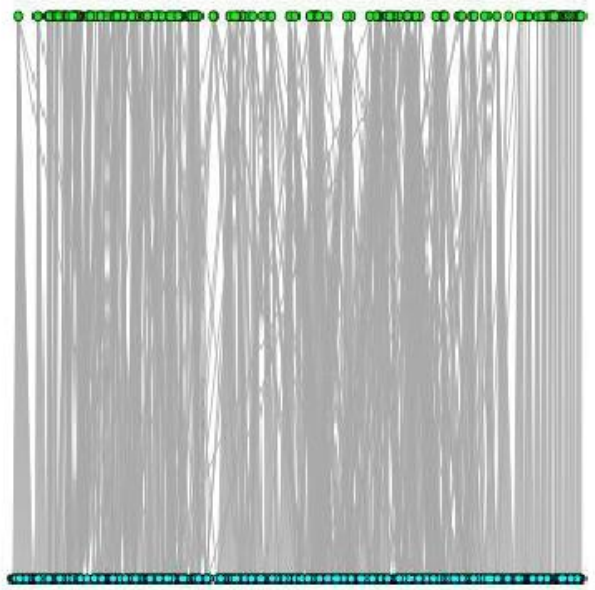


(d) Bigraph Pathway Degree Distribution for BC1

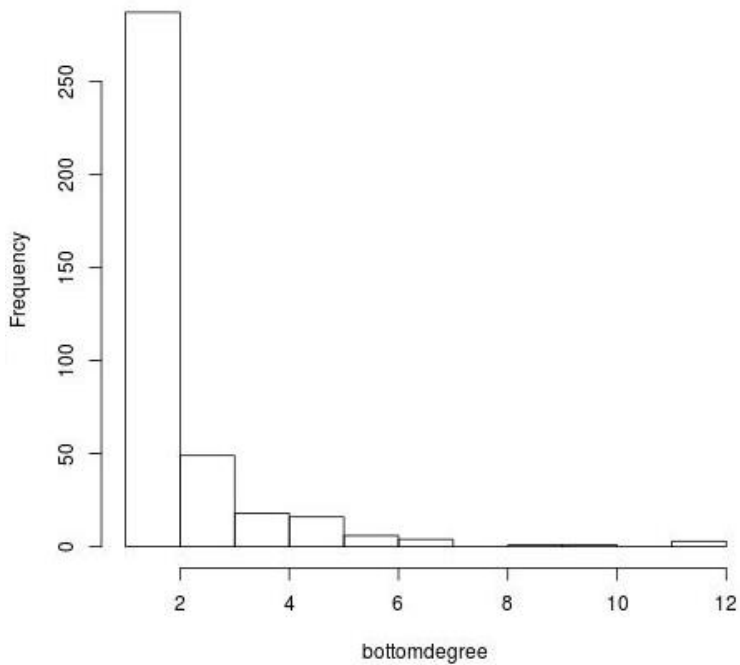
ERR166304 (BC2)



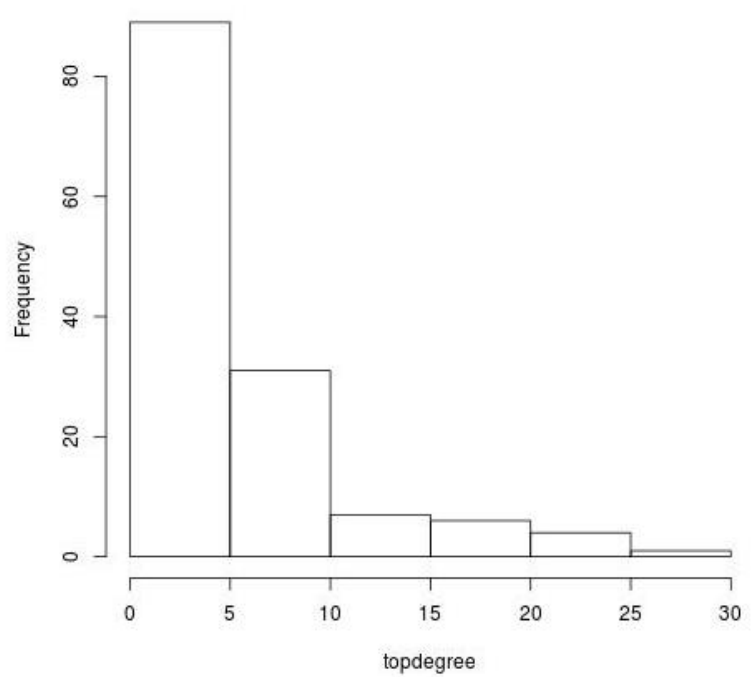
(a) Bipartite Pathway-Gene Interaction of BC2



(b) Pathway-Gene Bipartite Graph

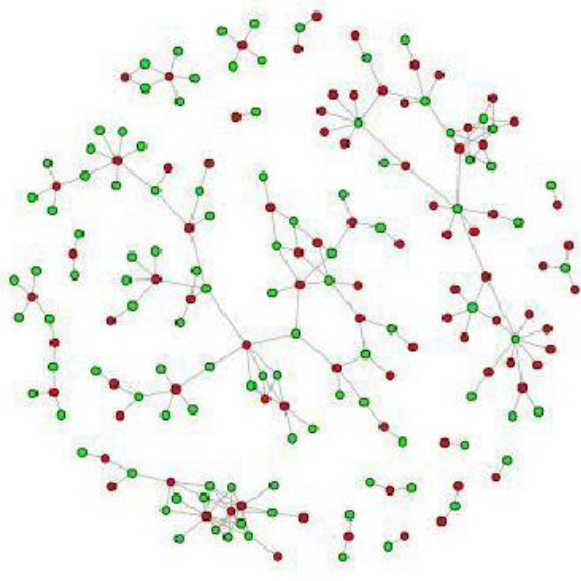


(c) Bigraph Gene Degree Distribution for BC2

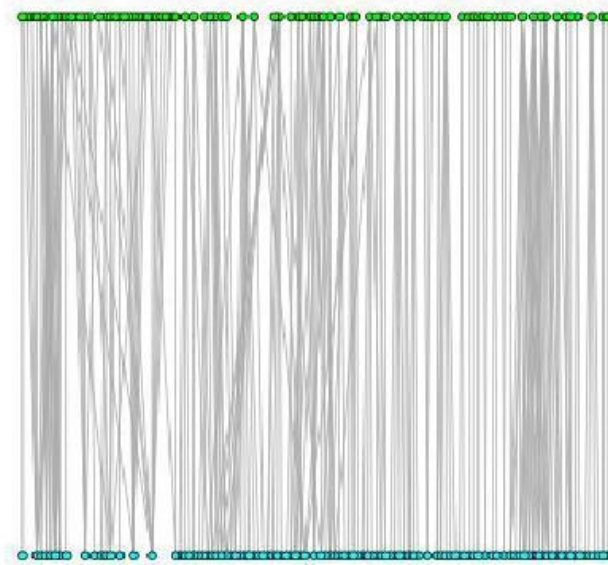


(d) Bigraph Pathway Degree Distribution for BC2

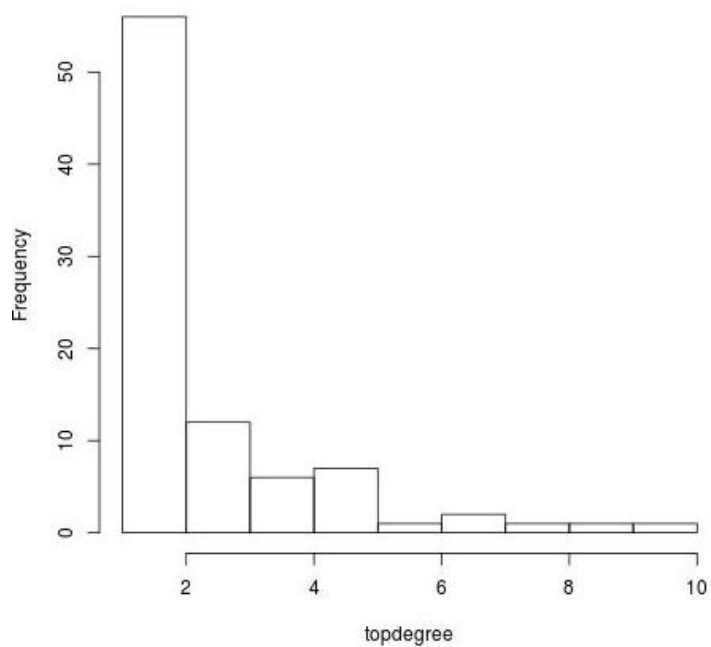
ERR166307 (BC3)



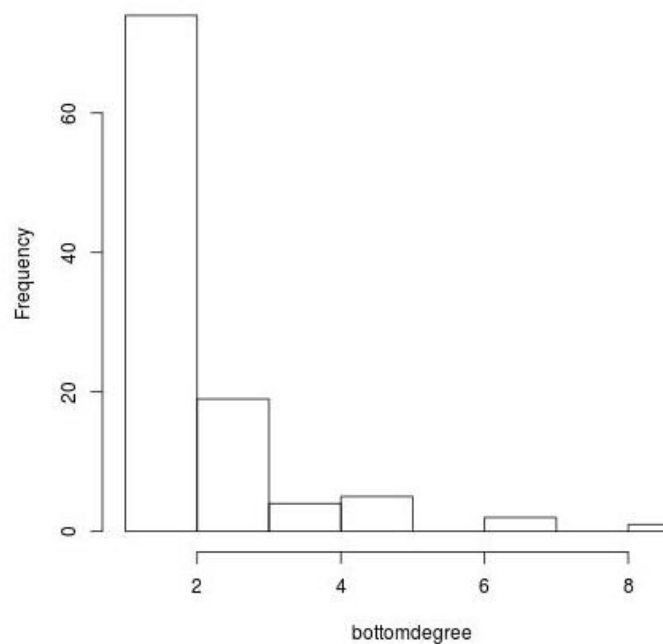
(a) Bipartite Pathway-Gene Interaction of BC3



(b) Pathway-Gene Bipartite Graph

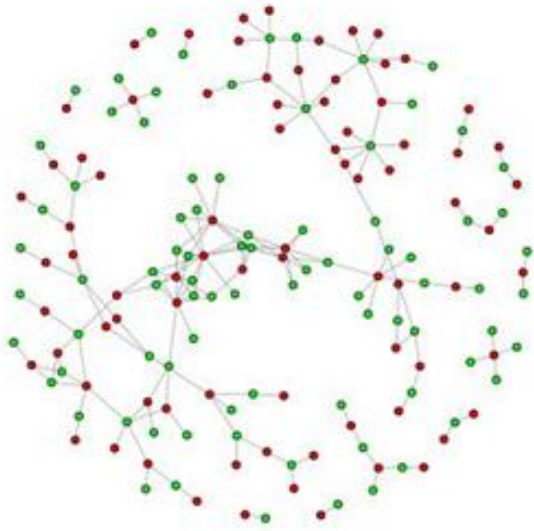


(c) Bigraph Pathway Degree Distribution for BC3

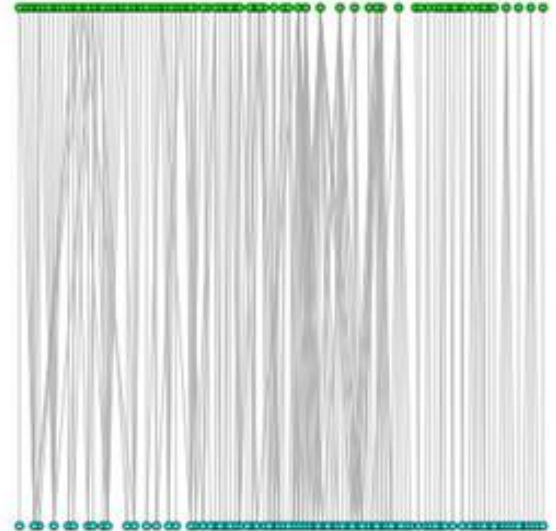


(d) Bigraph Gene Degree Distribution for BC3

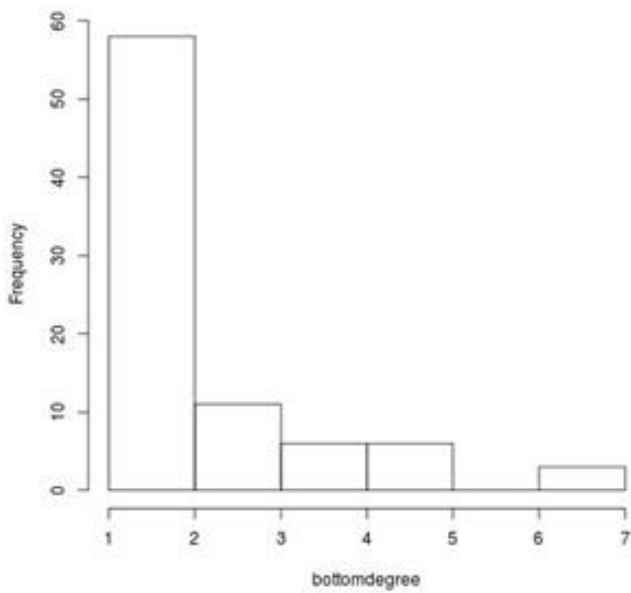
ERR166308 (BC4)



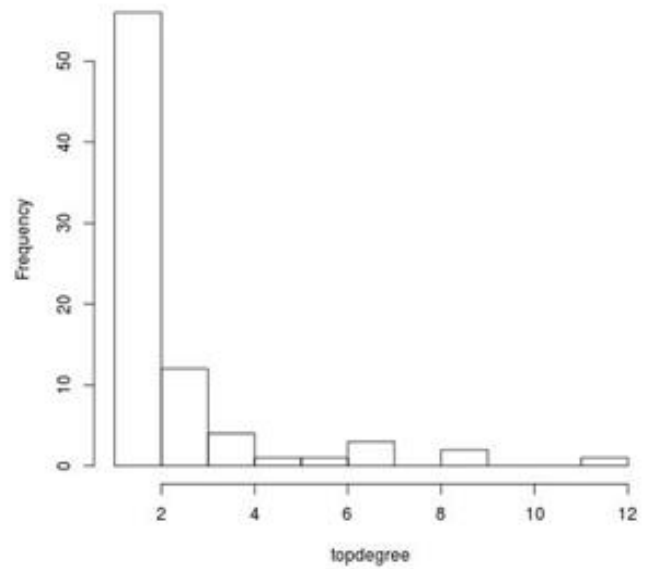
(a) Bipartite Pathway-Gene Interaction of BC4



(a) Pathway-Gene Bipartite graph of BC4



(a) Bigraph Pathway Degree Distribution of BC4

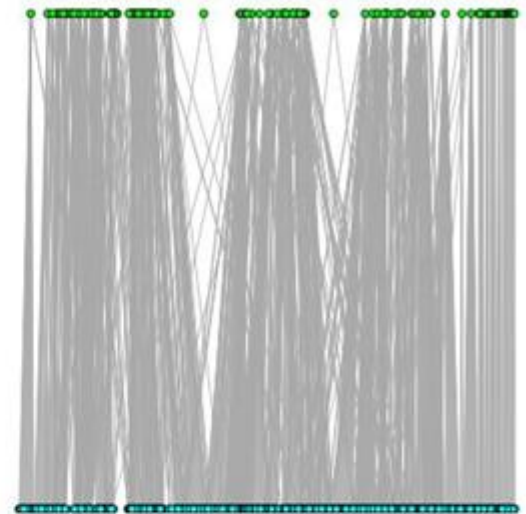


(a) Bigraph Gene Degree Distribution of BC4

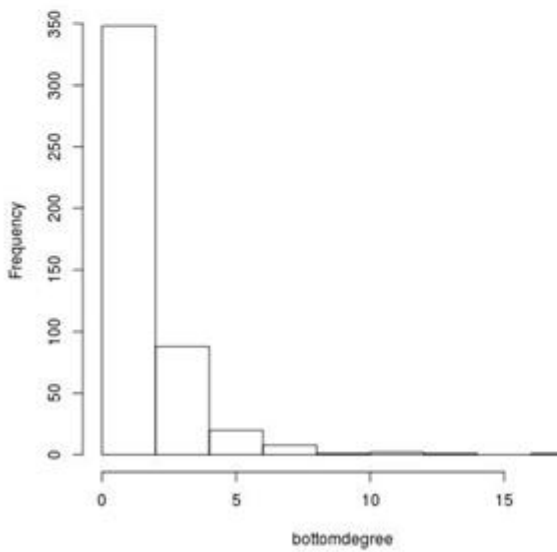
ERR166310 (BC5)



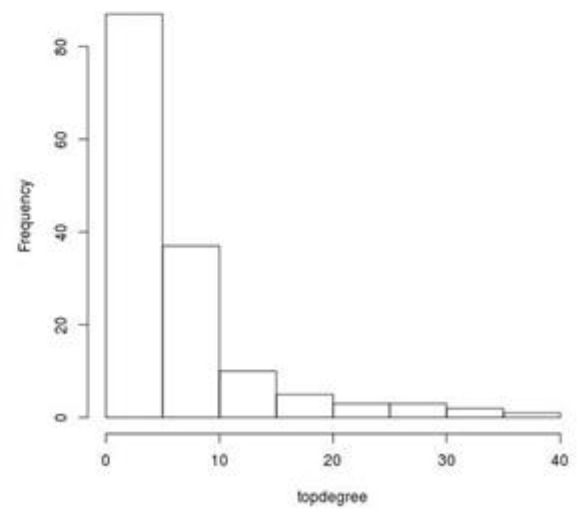
(a) Bipartite Pathway-Gene Interaction of BC5



(a) Pathway-Gene Bipartite graph of BC5

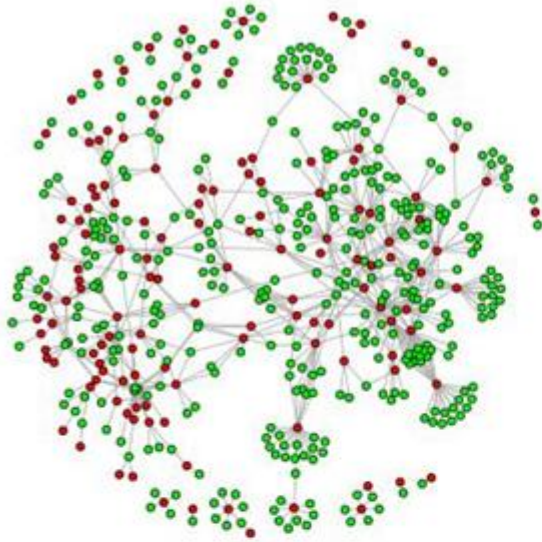


(a) Bigraph Pathway Degree Distribution of BC5

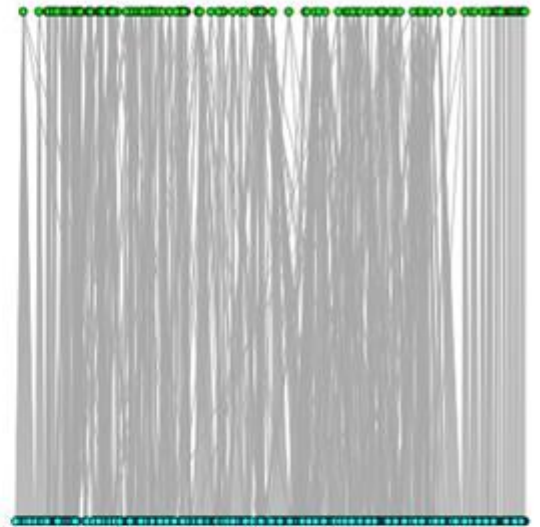


(a) Bigraph Gene Degree Distribution of BC5

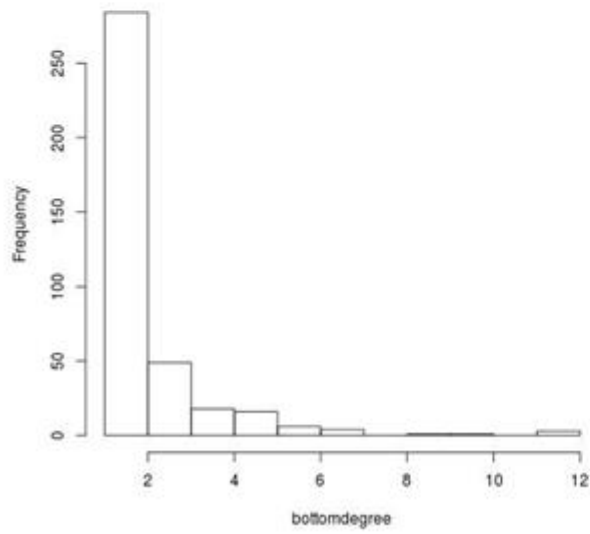
ERR166312 (BC6)



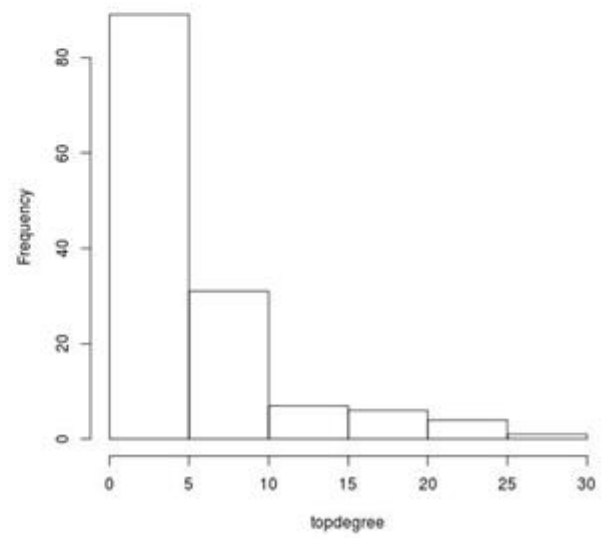
(a) Bipartite Pathway-Gene Interaction of BC6



(a) Pathway-Gene Bipartite graph of BC6

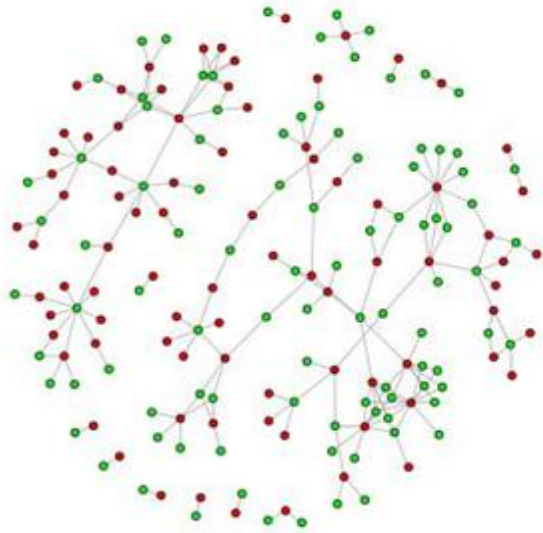


(a) Bigraph Pathway Degree Distribution of BC6

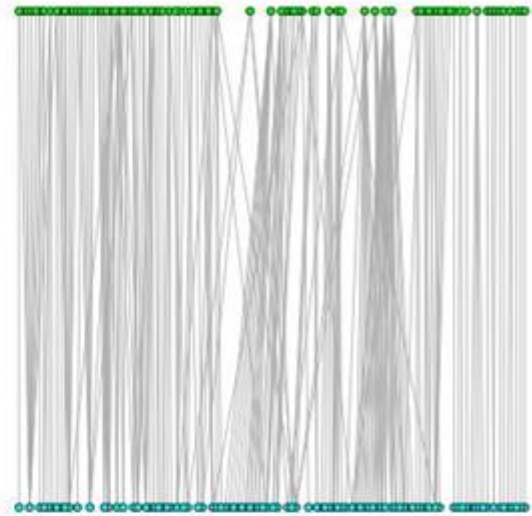


(a) Bigraph Gene Degree Distribution of BC6

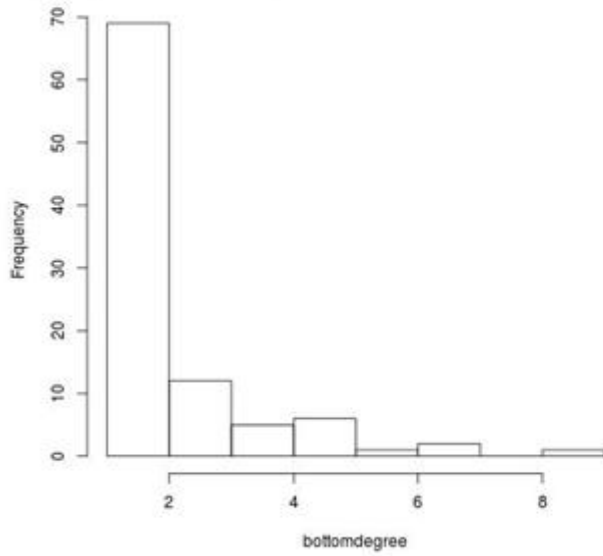
ERR166315 (BC7)



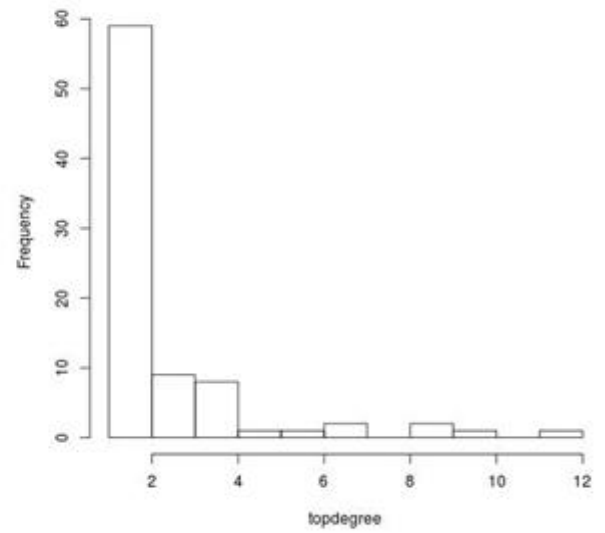
(a) Bipartite Pathway-Gene Interaction of BC7



(a) Pathway-Gene Bipartite graph of BC7

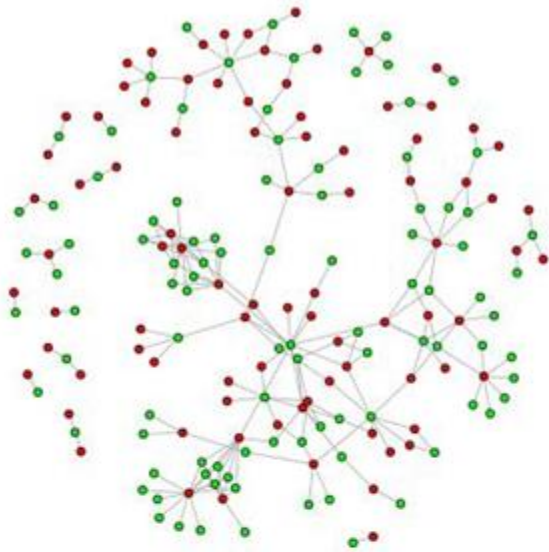


(a) Bigraph Pathway Degree Distribution of BC7

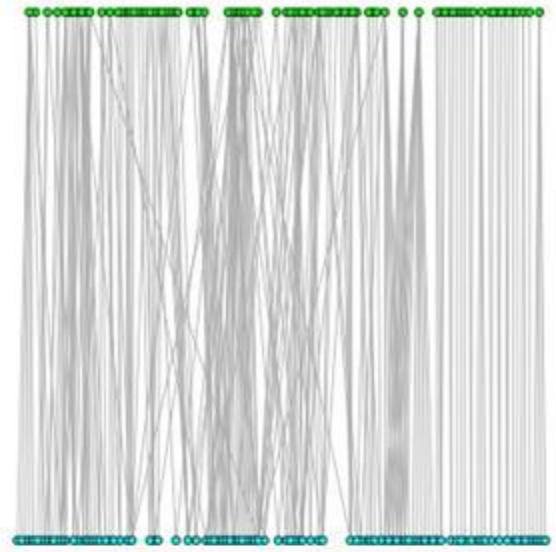


(a) Bigraph Gene Degree Distribution of BC7

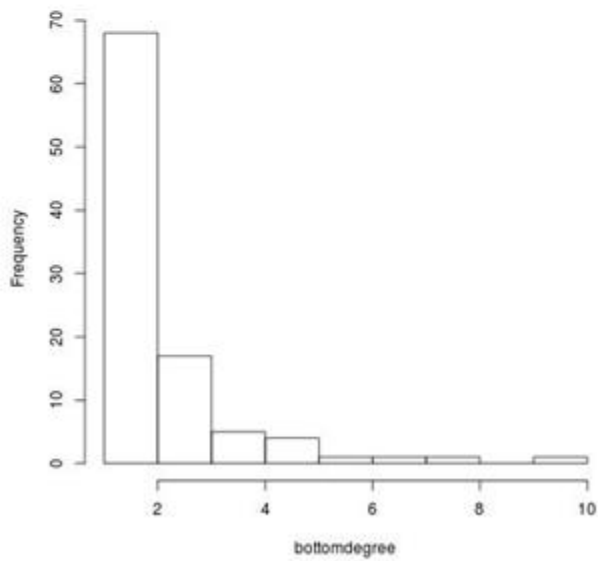
ERR166330 (BC8)



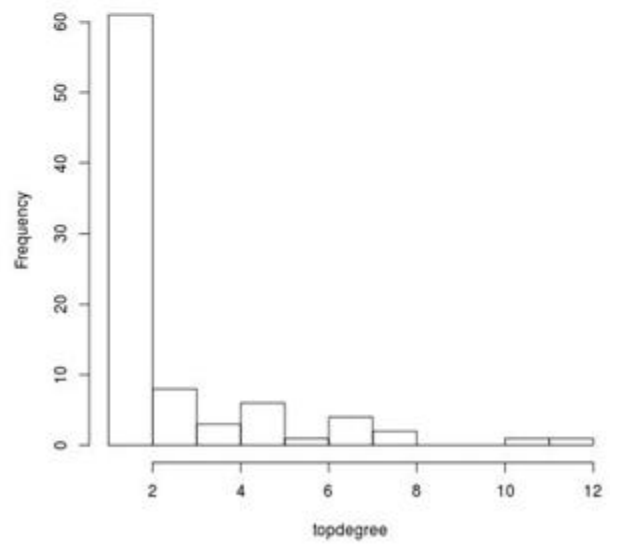
(a) Bipartite Pathway-Gene Interaction of BC8



(a) Pathway-Gene Bipartite graph of BC8

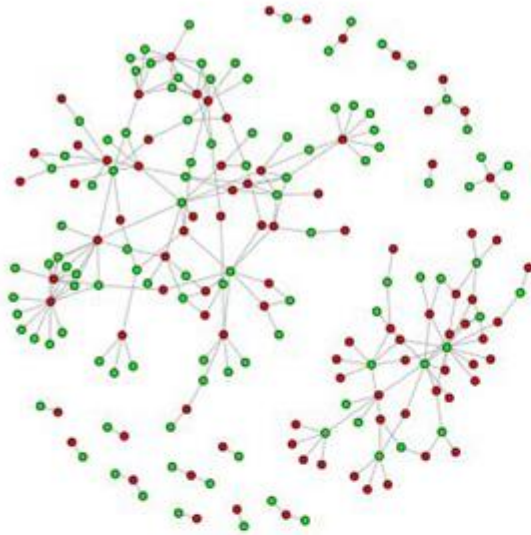


(a) Bigraph Pathway Degree Distribution of BC8

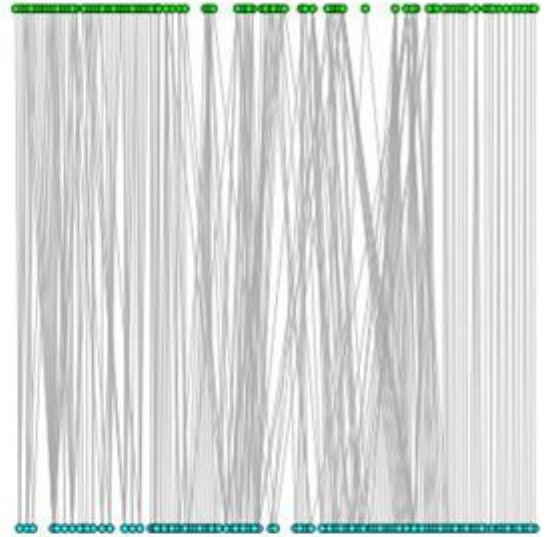


(a) Bigraph Gene Degree Distribution of BC8

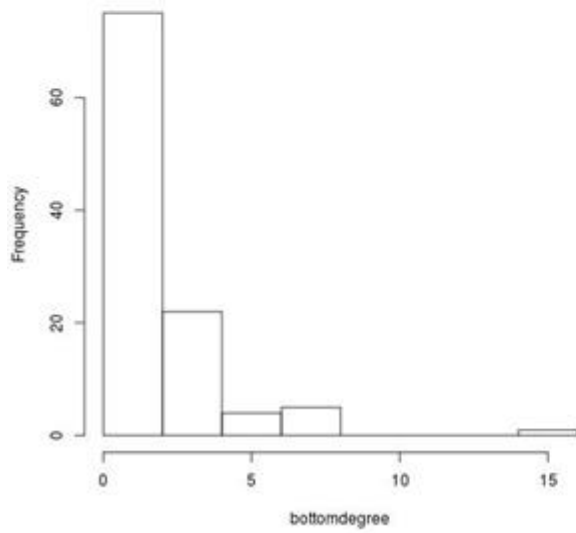
ERR166333 (BC9)



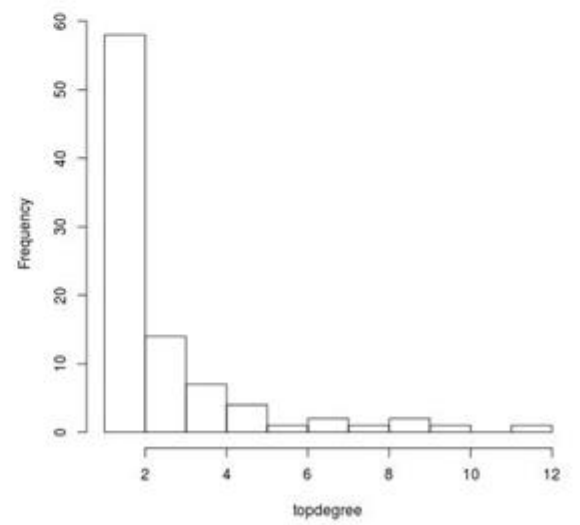
(a) Bipartite Pathway-Gene Interaction of BC9



(a) Pathway-Gene Bipartite graph of BC9

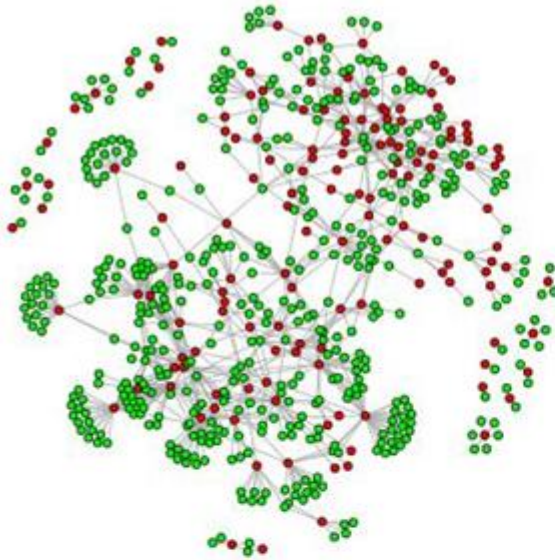


(a) Bigraph Pathway Degree Distribution of BC9

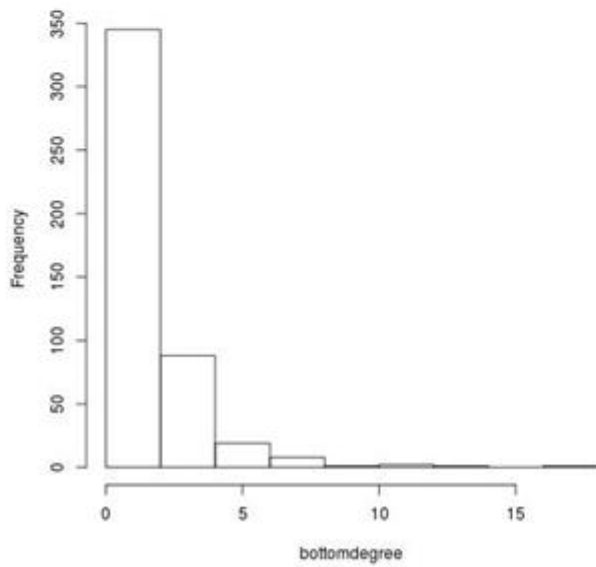


(a) Bigraph Gene Degree Distribution of BC9

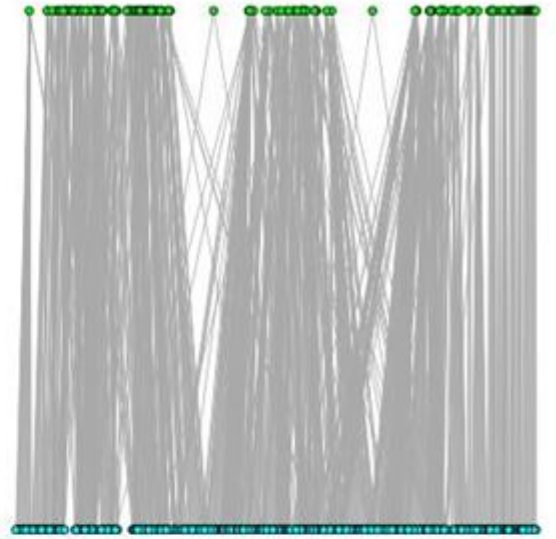
ERR166335 (BC10)



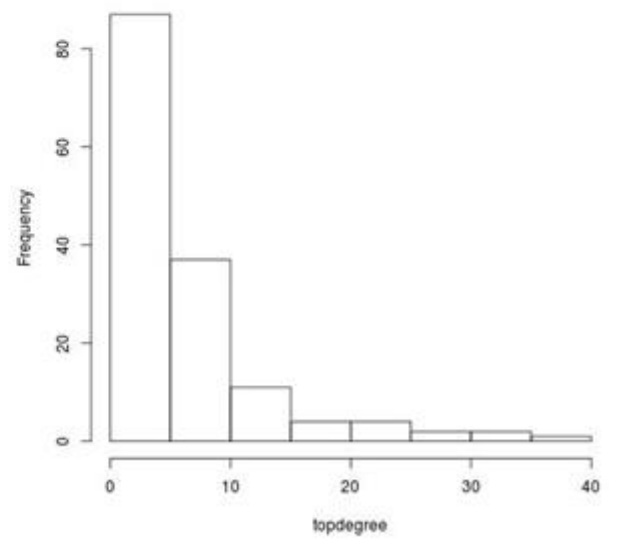
(a) Bipartite Pathway-Gene Interaction of BC10



(a) Bigraph Pathway Degree Distribution of BC10

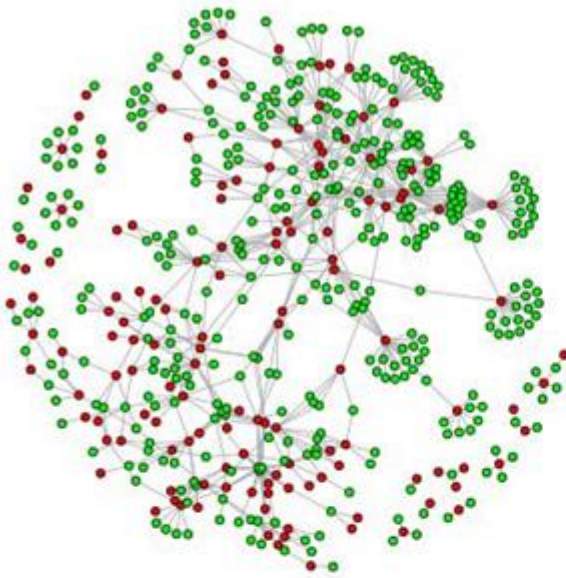


(a) Pathway-Gene Bipartite graph of BC10

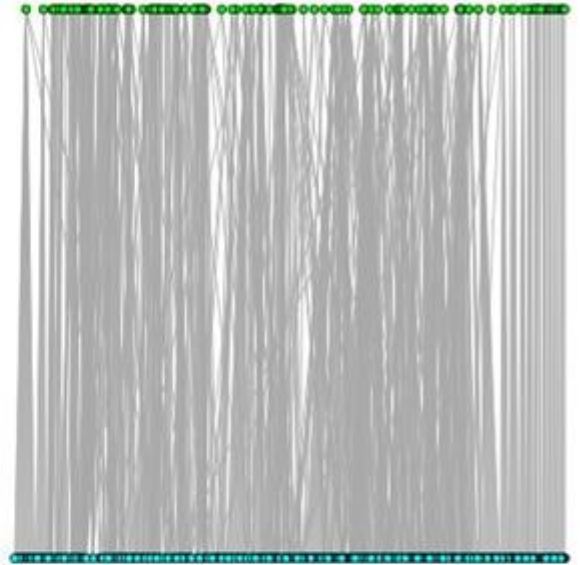


(a) Bigraph Gene Degree Distribution of BC10

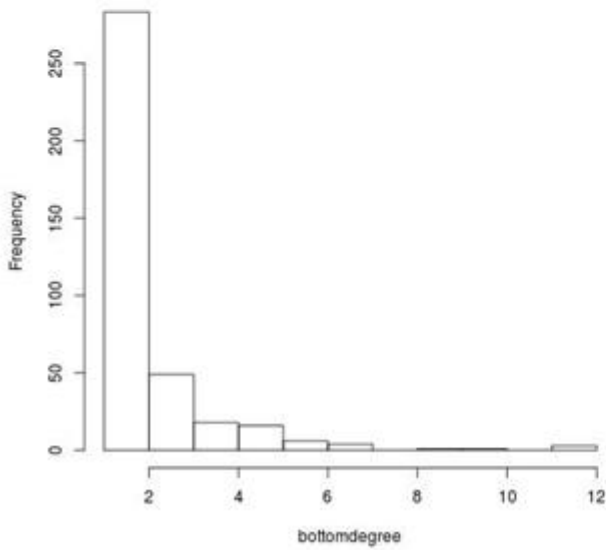
ERR166336 (BC11)



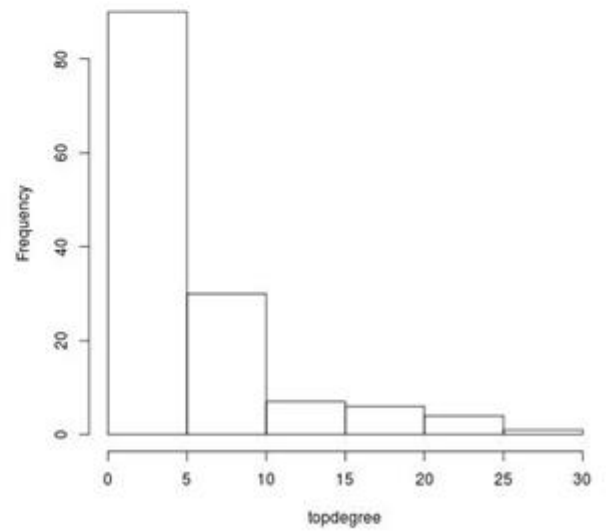
(a) Bipartite Pathway-Gene Interaction of BC11



(a) Pathway-Gene Bipartite graph of BC11



(a) Bigraph Pathway Degree Distribution of BC11



(a) Bigraph Gene Degree Distribution of BC11