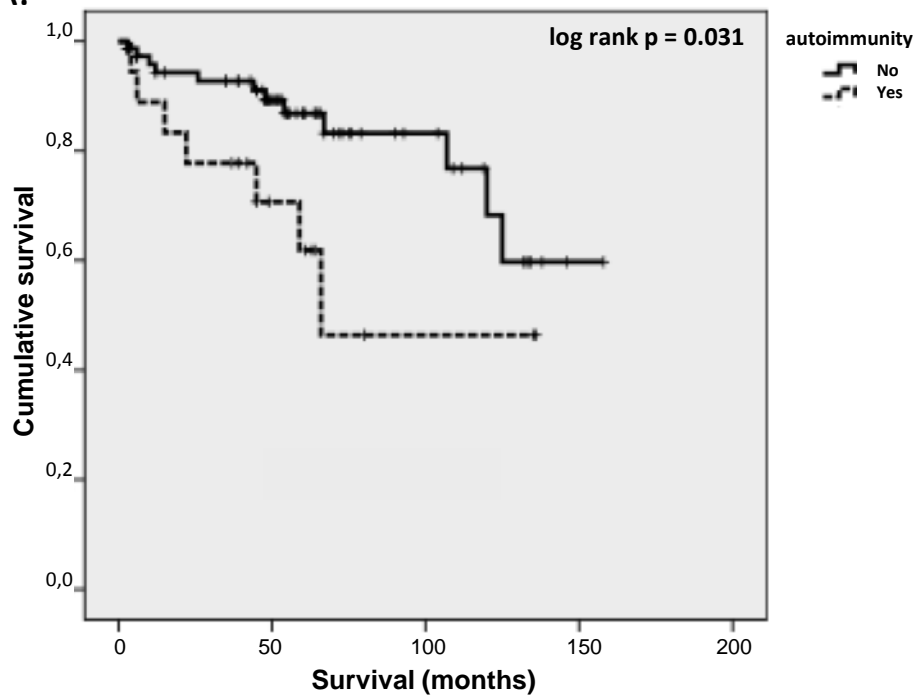
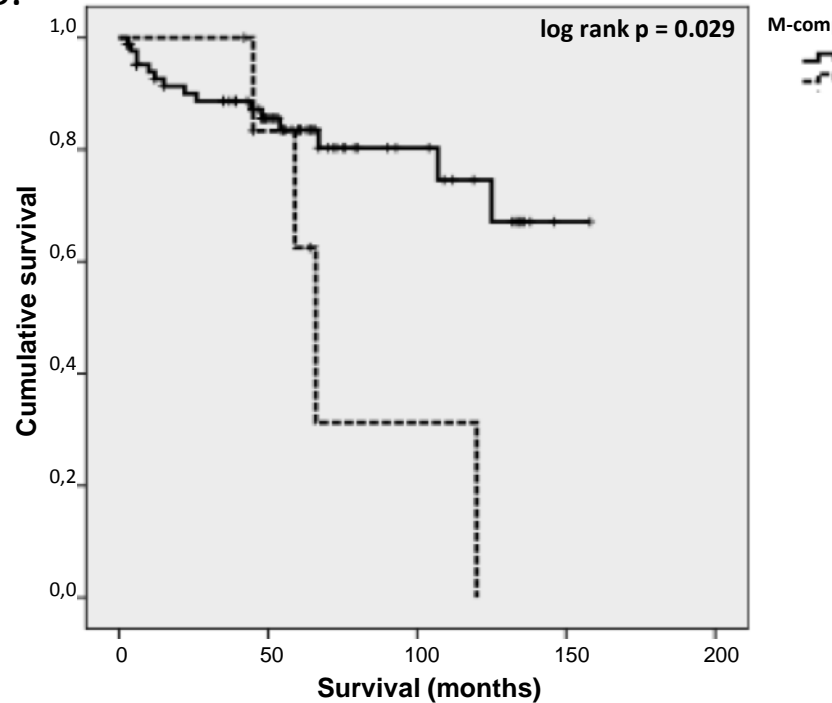
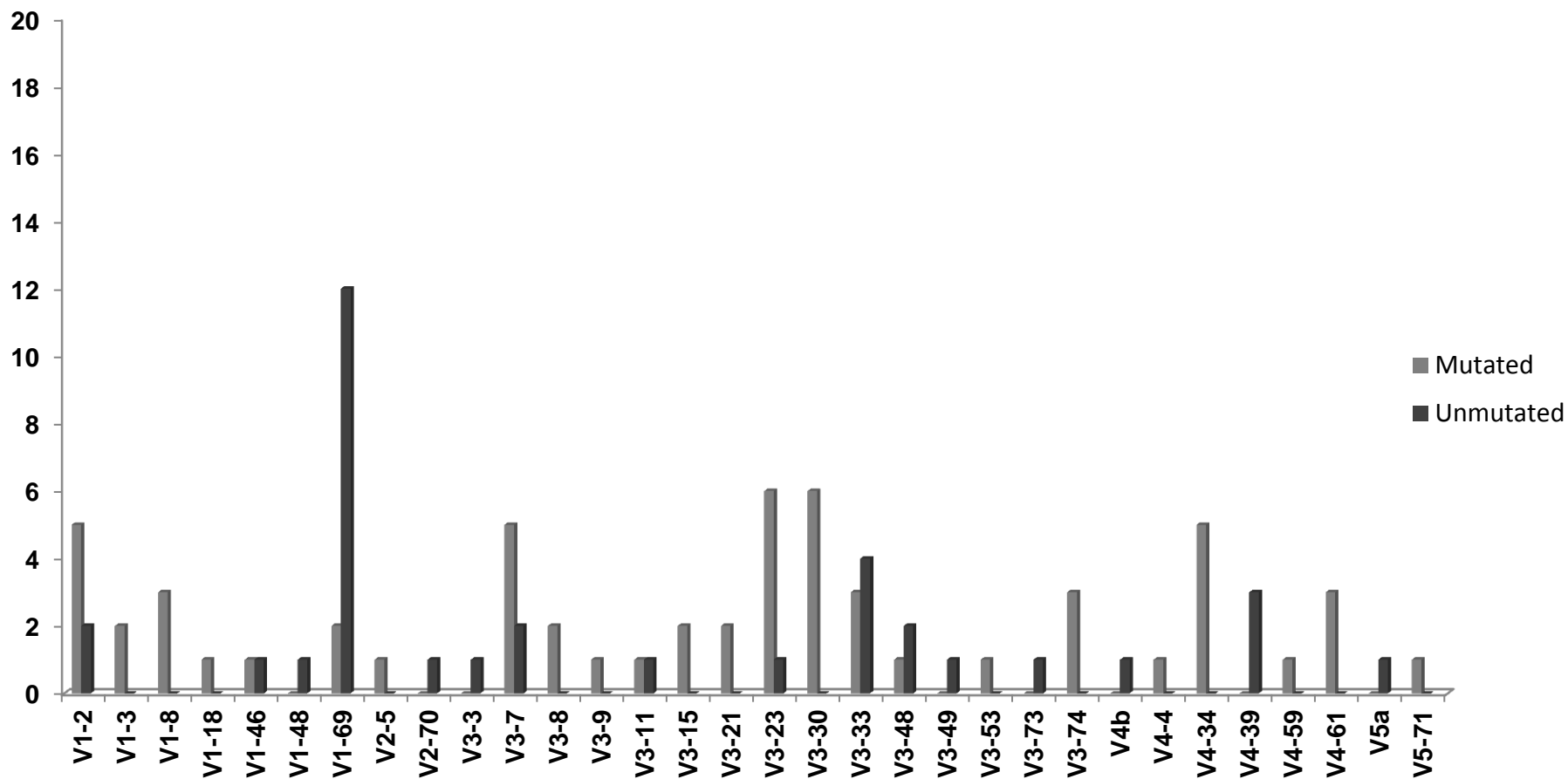
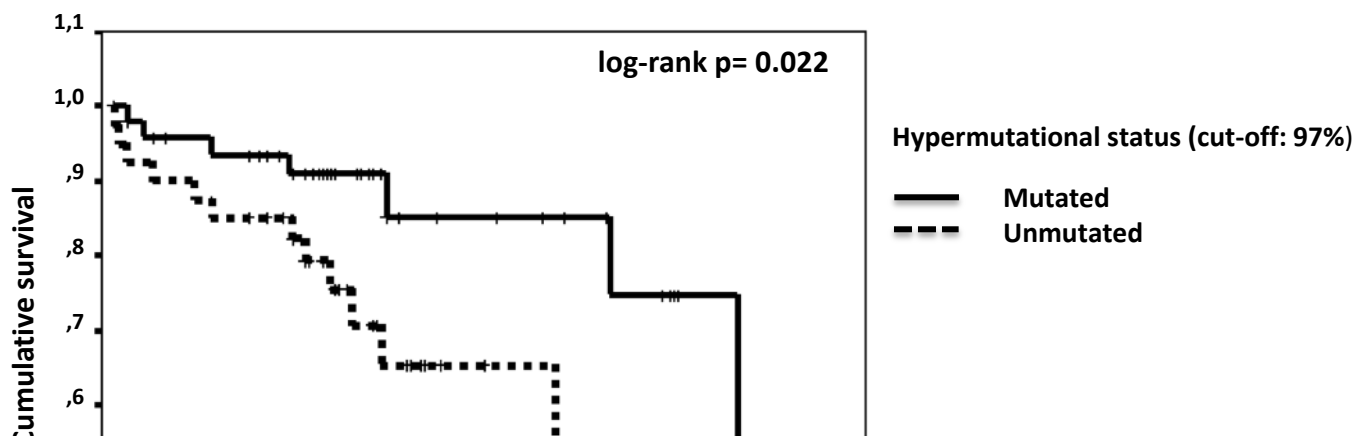


A.



B.



A.**B.**

Supplementary Table 1. Immunophenotyping of 19 healthy individuals analyzed in this study

WBC (x 10 ⁹ /L) (median, IQR)	6.60 (5.38, 8.23)
Neutrophils (x 10 ⁹ /L) (median, IQR)	3.70 (2.87, 4.99)
Monocytes (x 10 ⁹ /L) (median, IQR)	0.39 (0.28, 0.49)
Lymphocytes (x 10 ⁹ /L) (median, IQR)	2.34 (1.88, 2.92)
T cells (%) (median - IQR)	68.30 (61.22, 75.97)
T cells (x 10 ⁹ /L) (median - IQR)	1.53 (1.25, 1.96)
T4 cells (%) (median - IQR)	65.85 (58.45, 71.45)
T4 cells (x 10 ⁹ /L) (median - IQR)	1.00 (0.81, 1.26)
T8 cells (%) (median - IQR)	31.30 (25.67, 37.47)
T8 cells (x 10 ⁹ /L) (median - IQR)	0.48 (0.35, 0.64)
Ratio T4/T8 (median, IQR)	1.20 (0.91, 2.00)
B cells (%) (median, IQR)	9.60 (7.30, 12.37)
B cells (x 10 ⁹ /L) (median, IQR)	0.22 (0.16, 0.32)
IgD ⁺ /CD27 ⁻ (%) (median, IQR)	61.85 (50.90-76.45)
IgD ⁺ /CD27 ⁻ (x 10 ⁹ /L) (median, IQR)	0.12 (0.09-0.19)
IgD ⁺ /CD27 ⁺ (%) (median, IQR)	9.10 (4.82-14.12)
IgD ⁺ /CD27 ⁺ (x 10 ⁹ /L) (median, IQR)	0.02 (0.01-0.04)
IgD ⁻ /CD27 ⁺ (%) (median, IQR)	20.20 (12.60-30.48)
IgD ⁻ /CD27 ⁺ (x 10 ⁹ /L) (median, IQR)	0.04 (0.02-0.07)

Abbreviations: IQR, interquartile range; WBC, white blood cell count

