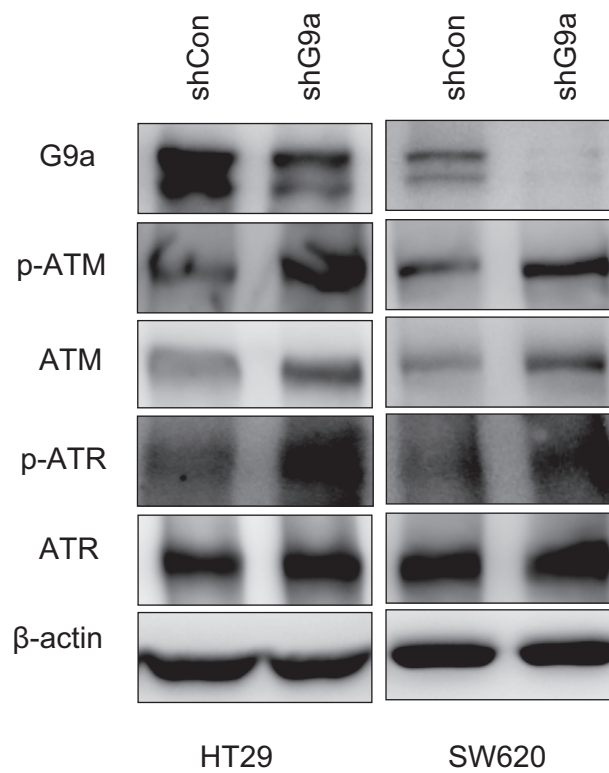
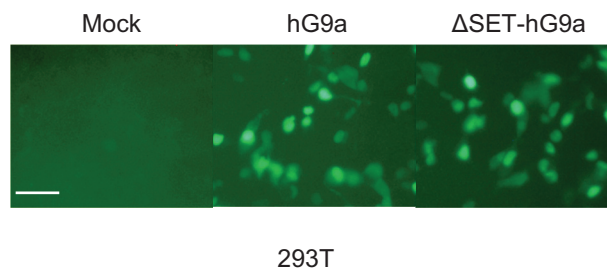


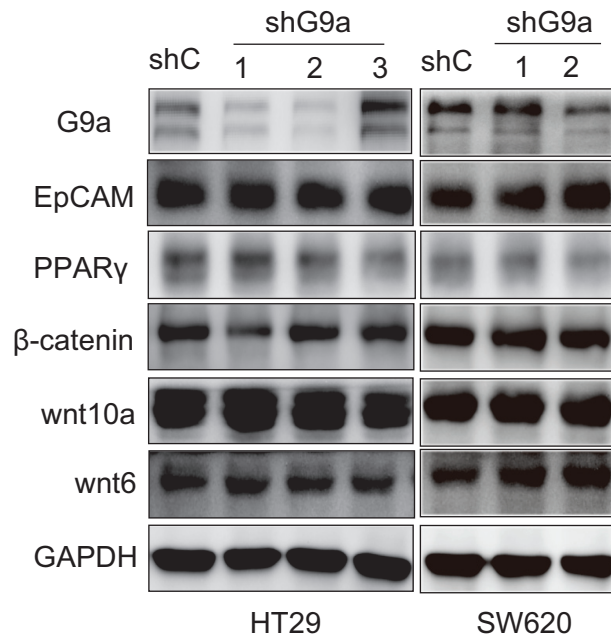
SUPPLEMENTARY FIGURES



Supplementary Figure S1: Depletion of G9a upregulates the protein level of p-ATM and p-ATR. Protein levels of G9a, p-ATM, ATM, p-ATR, ATR and β-actin (loading control) from HT29 and SW620 cells that stably suppress G9a. Each condition was studied at $n \geq 3$.



Supplementary Figure S2: The representative pictures of 293T cell after stable transfection with GFP-tagged full length or SET domain deleted G9a (scale bar 25 μM).



Supplementary Figure S3: Depletion of G9a has no effect on EpCAM, PPAR γ , and Wnt expression. Protein levels of G9a, EpCAM, PPAR γ , β -catenin, Wnt6, Wnt10a and GAPDH (loading control) from HT29 and SW620 cells that stably suppress G9a. Each condition was studied at $n \geq 3$.