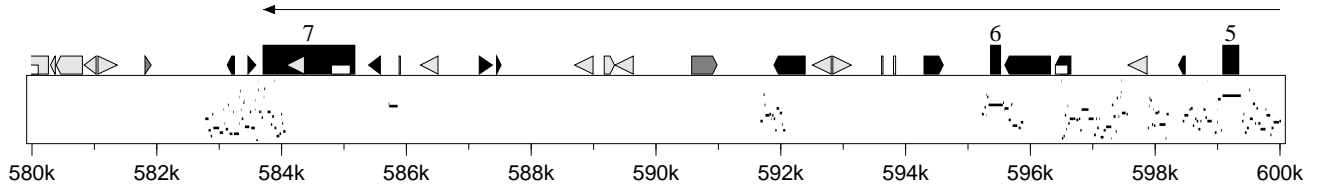
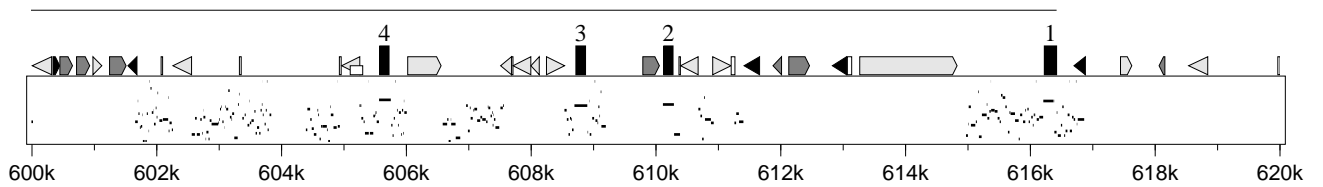


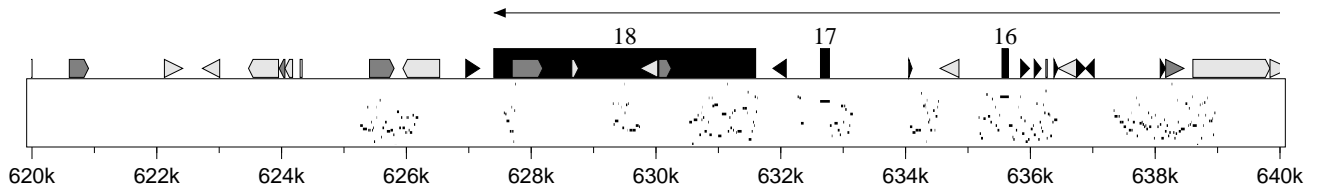
ALDH8A1

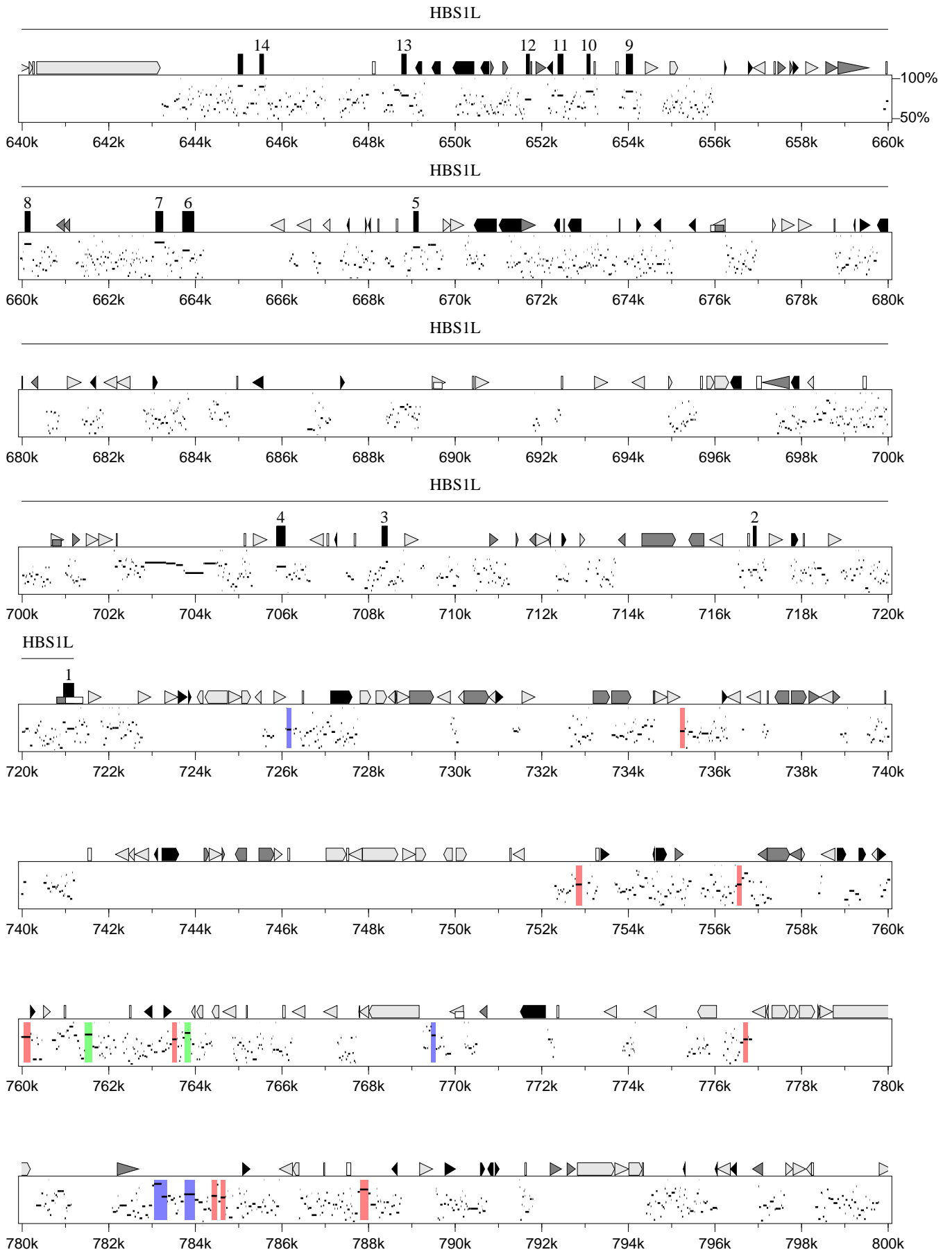


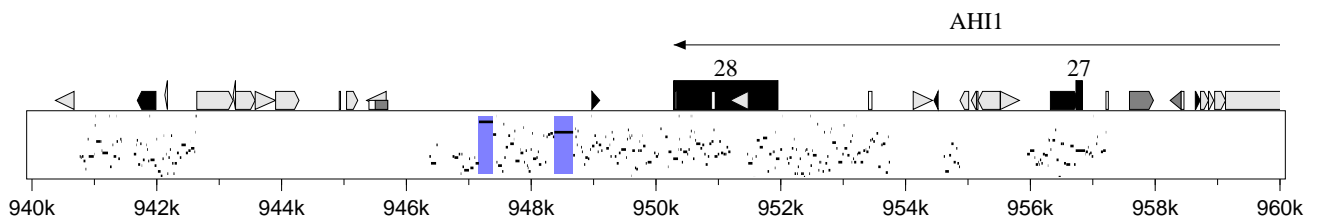
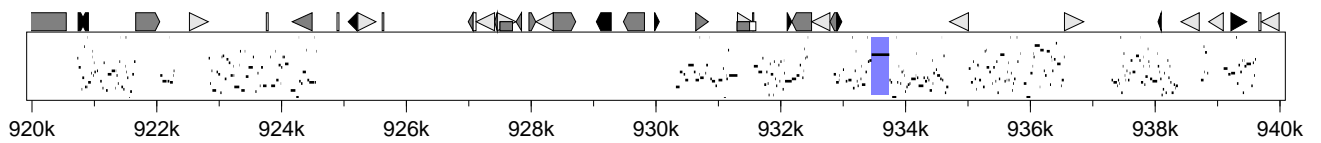
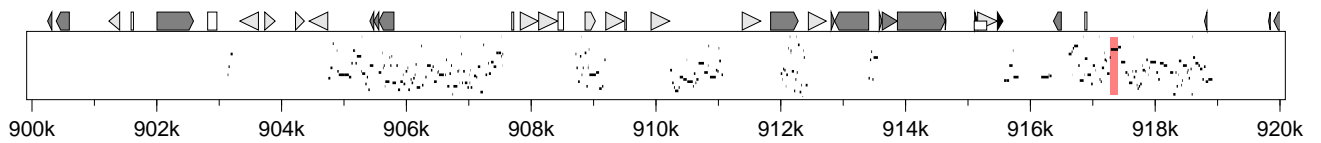
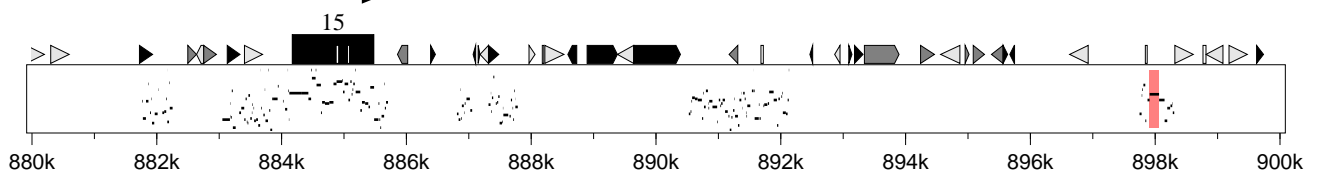
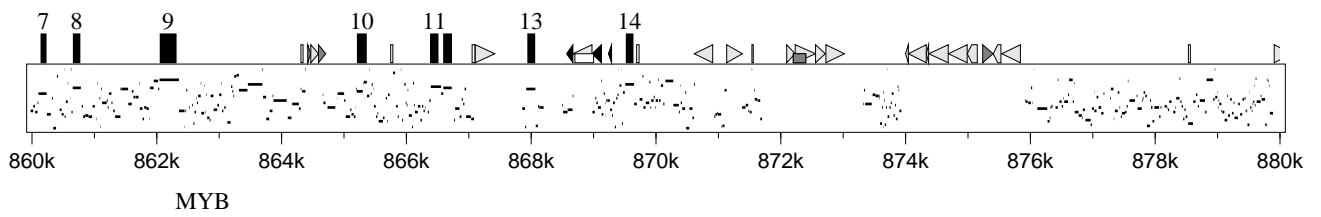
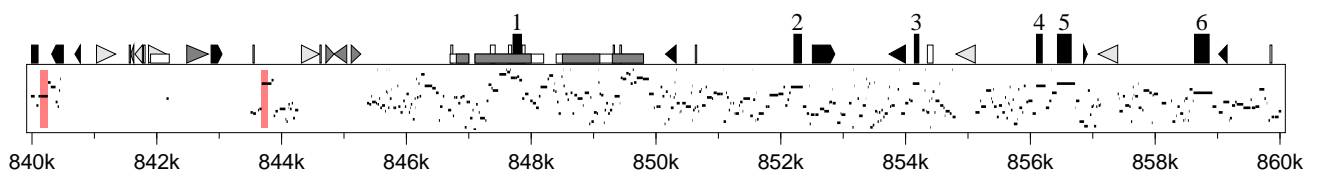
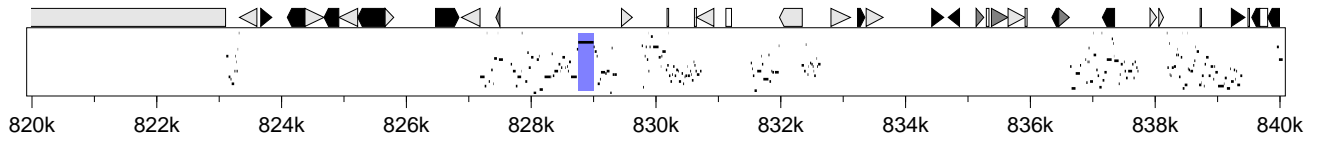
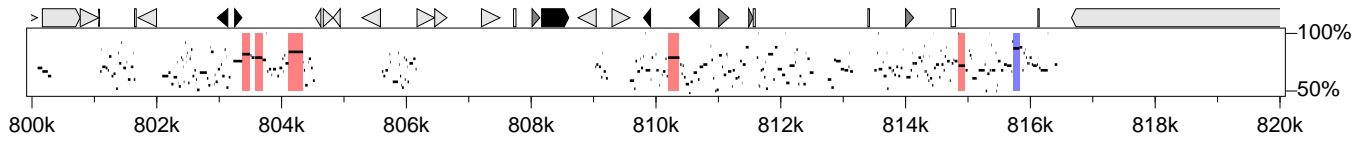
ALDH8A1

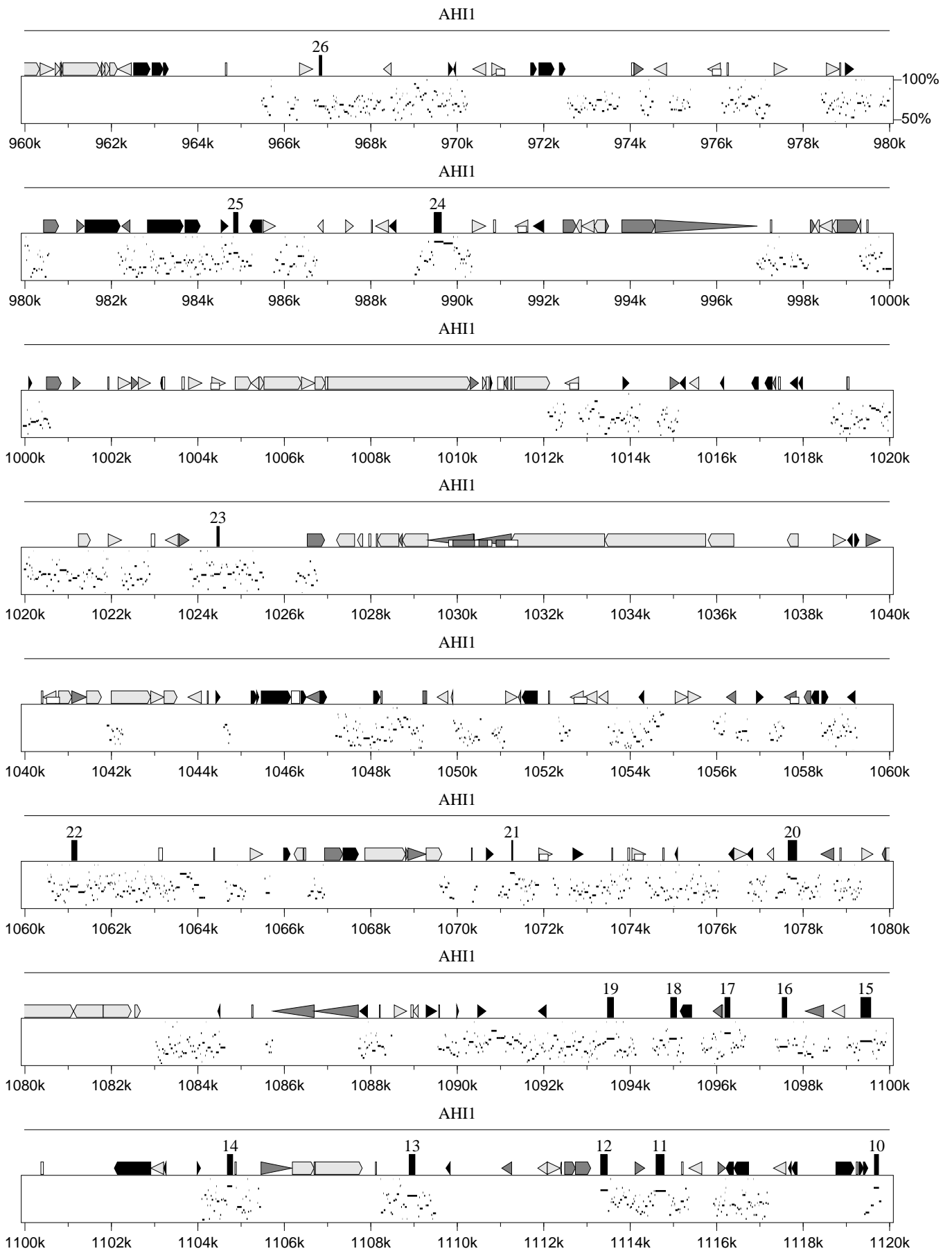


HBS1L

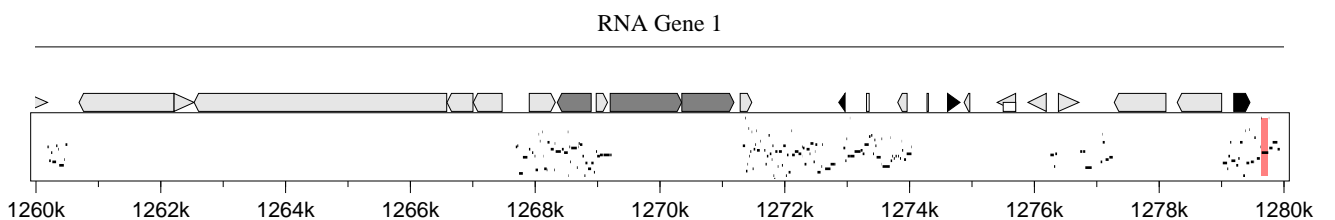
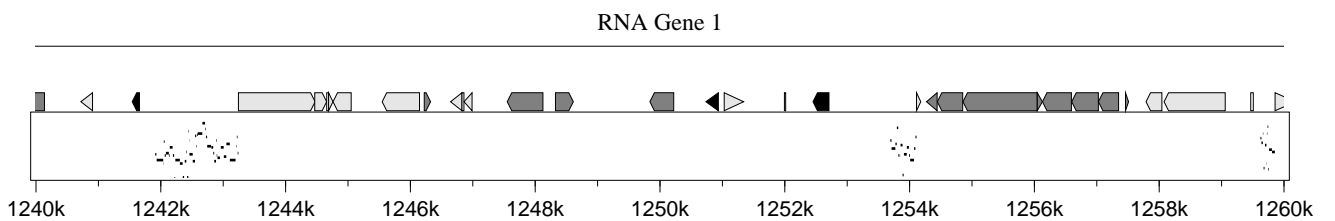
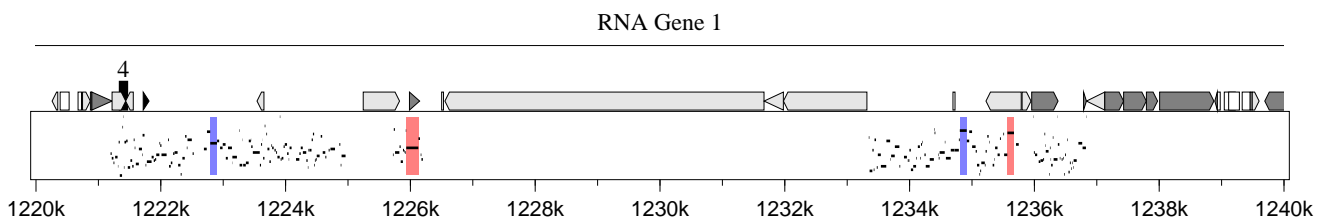
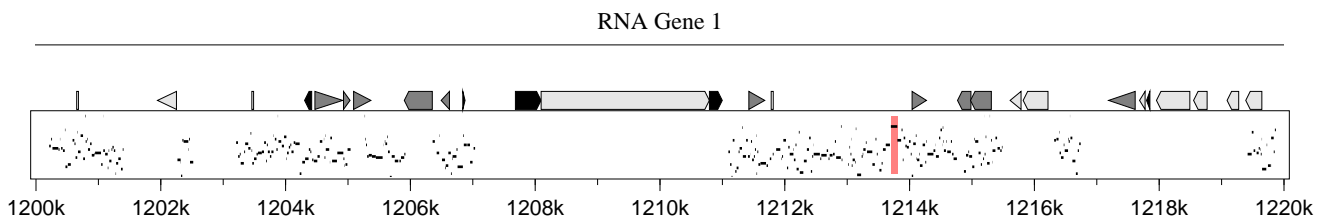
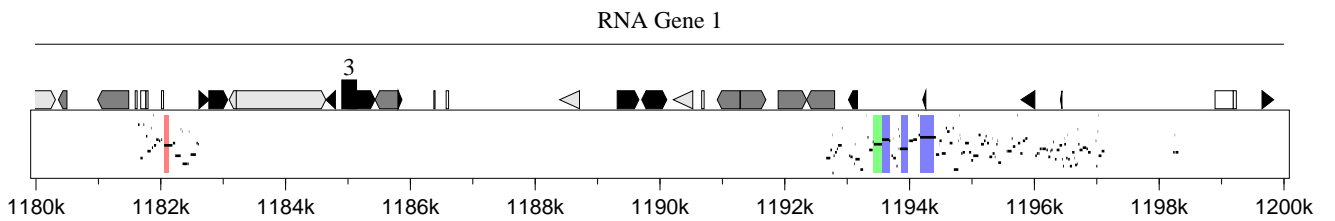
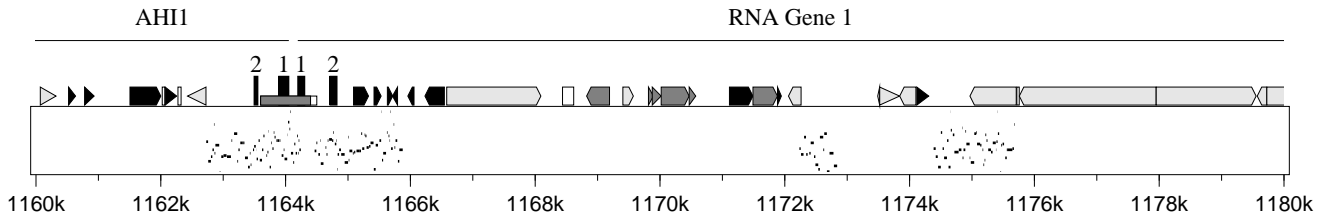
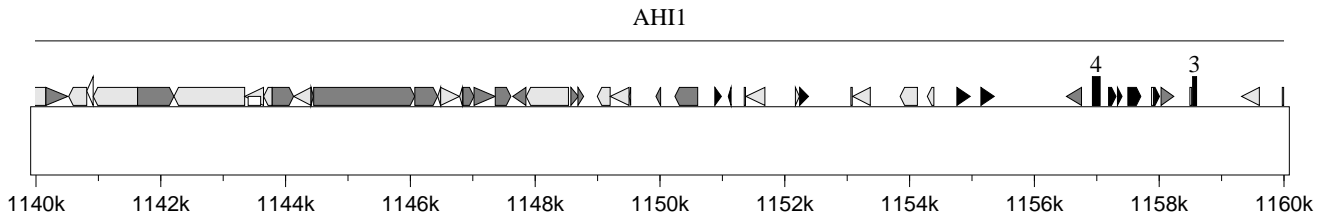
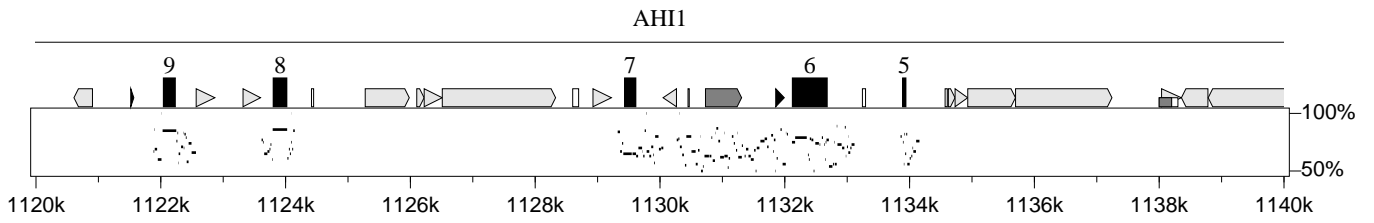


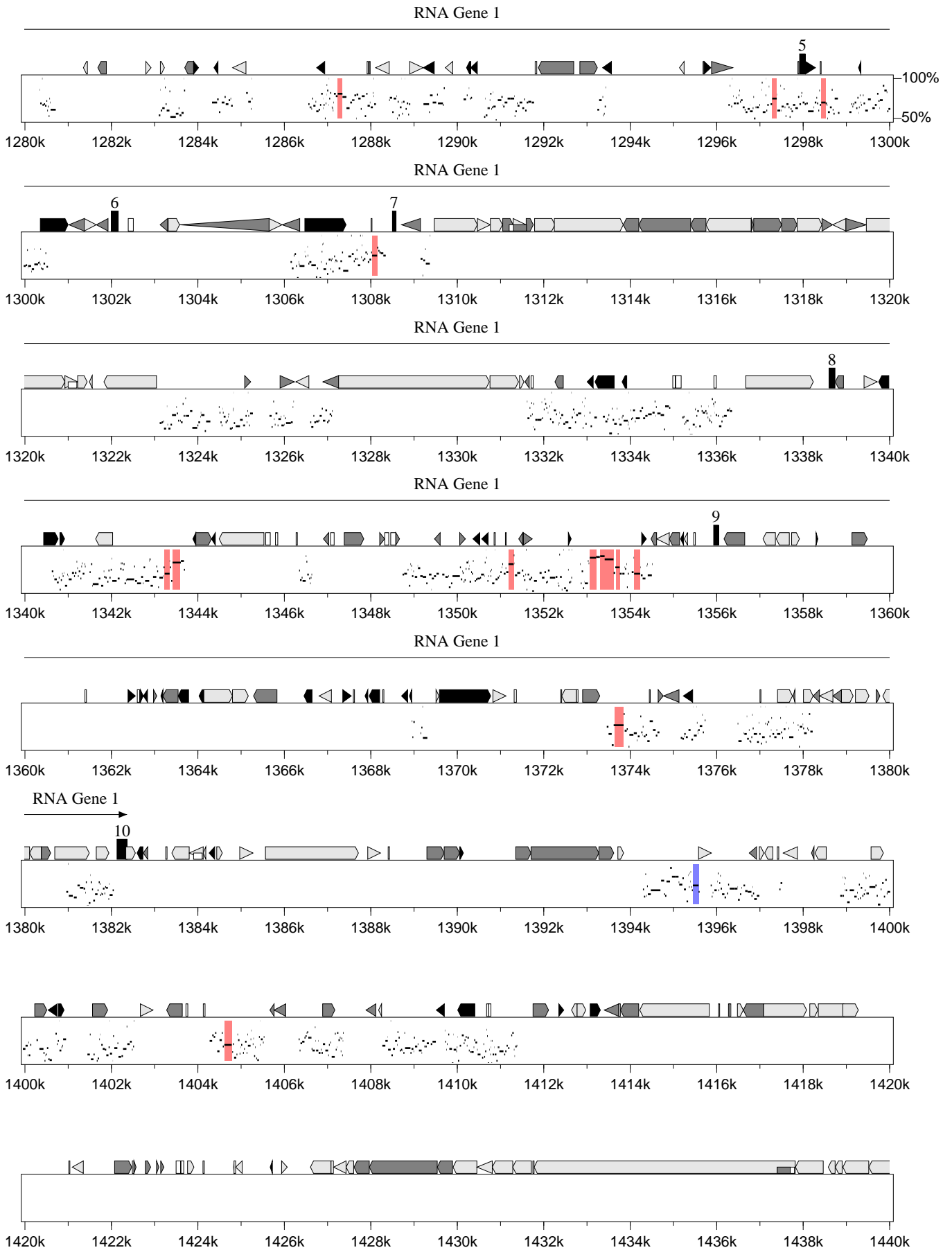


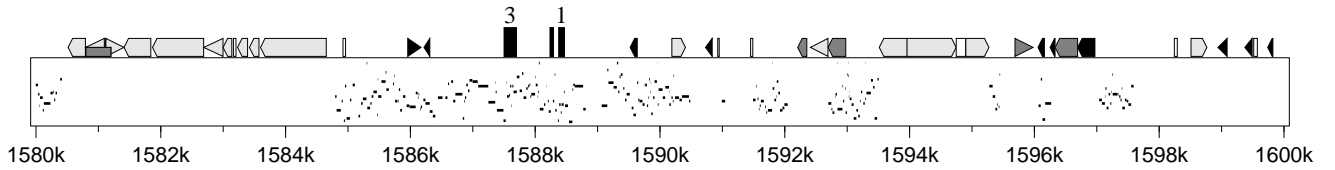
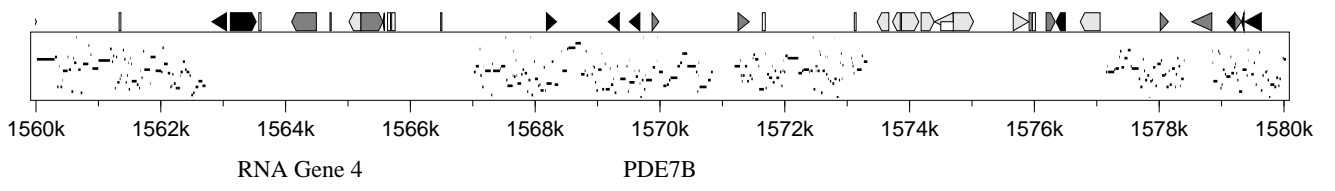
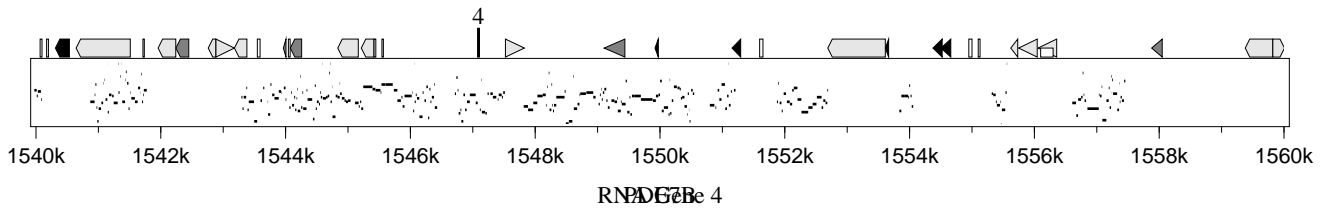
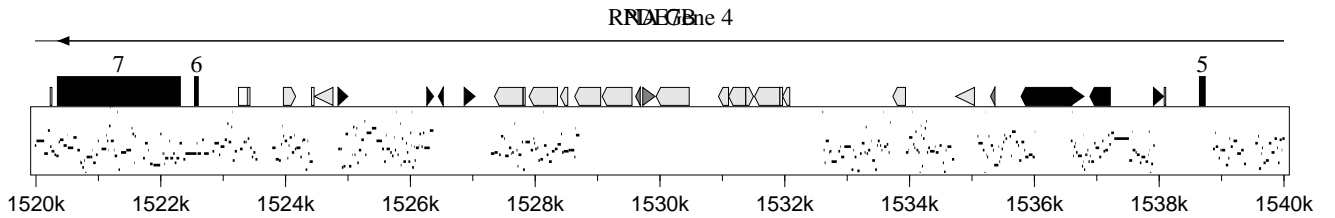
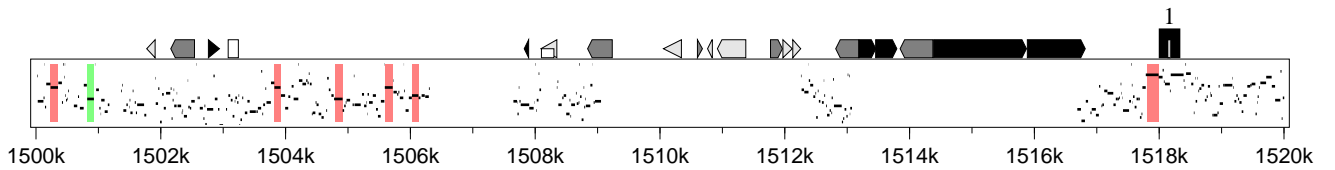
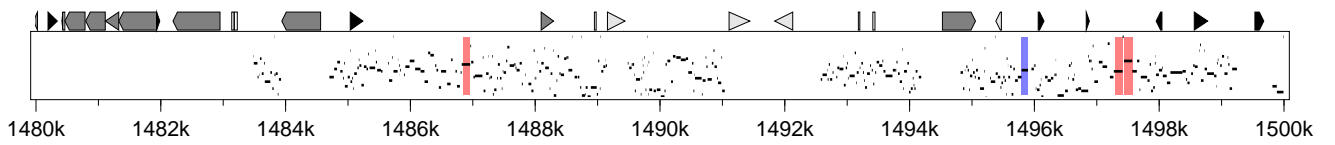
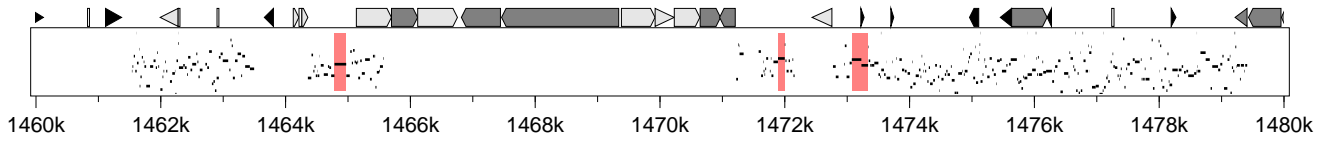
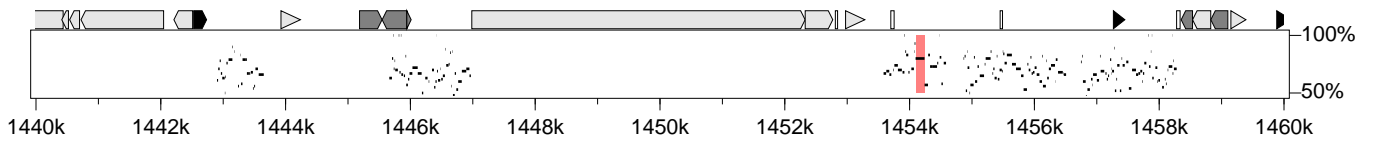




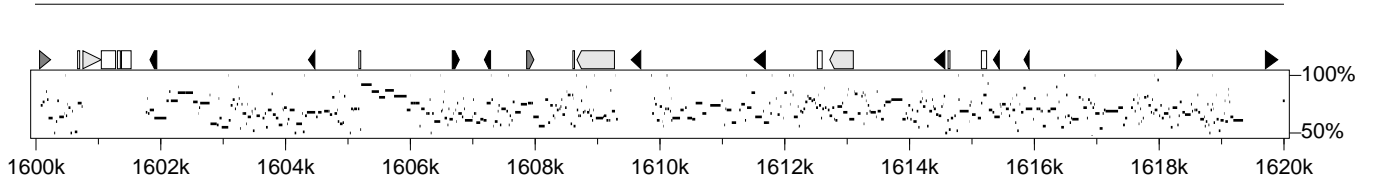




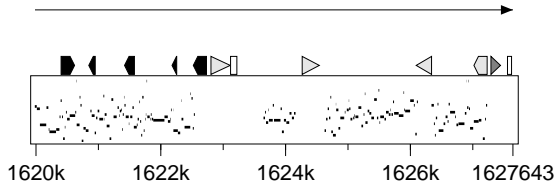






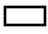






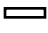



PDE7B



PDE7B



Gene	
Exon	
UTR	
RNA	
Simple	
MIR	
Other SINE	
LINE1	
LINE2	
LTR	
Other repeat	
CpG/GpC $\geq$ 0.60	
CpG/GpC $\geq$ 0.75	

6q23\_candidate\_interval\_

Tue Apr 6 12:08:56 EDT 2004

<http://bio.cse.psu.edu/pipmaker/>

Genome Research, Vol. 10, Issue 4, pp577-586, April 2000.