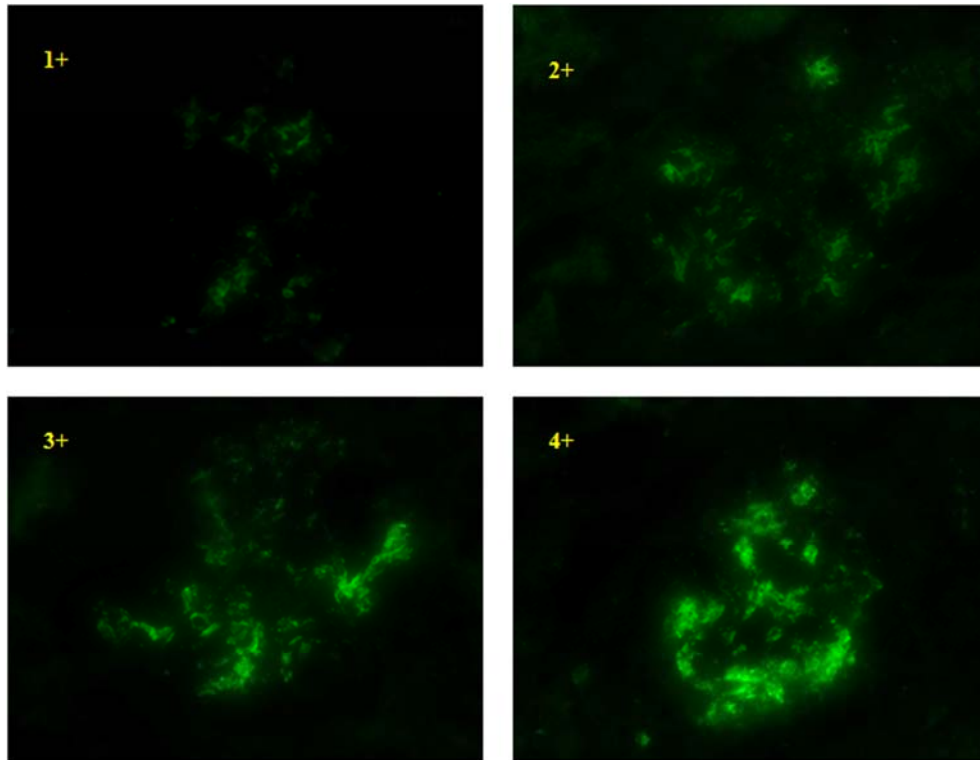


Supplemental Figure Legends

Supplemental Figure 1. Representative pictures of immunofluorescence staining of mesangial C3 1+ to 4+. Deposited C3 was stained by FITC labeled polyclonal rabbit anti-human C3c complement antibody (green). Images were showed in 400 × magnitude.

Supplemental Figure 2. Mouse anti-human CFH antibodies (ELISA detection) detected only CFH, but not FHL-1 or CFH related proteins. Same amount (0.4ug) of recombinant FHL-1, CFH, CFHR1, CFHR2, CFHR3, CFHR4 and CFHR5 were coated on ELISA plate, separately. Mouse monoclonal anti-human CFH antibodies (US Biological, Swampscott, MA, USA) were used for detection.

Supplemental Figure 1.



Supplemental Figure 2.

