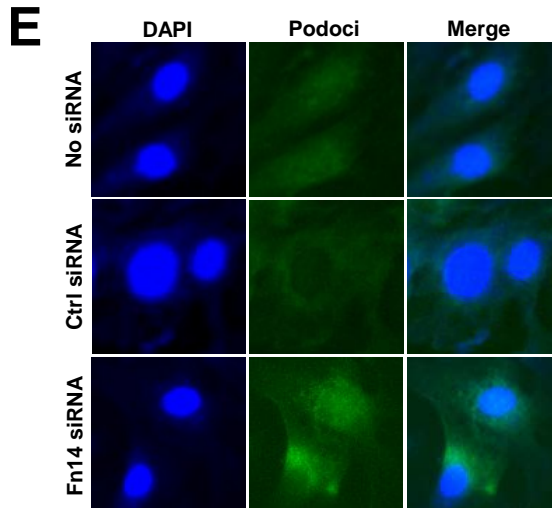
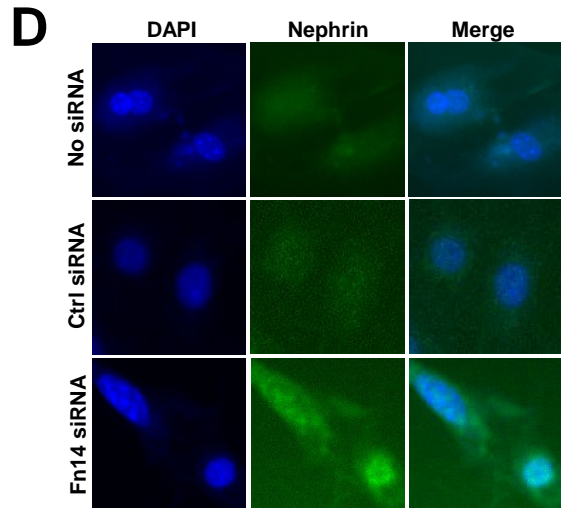
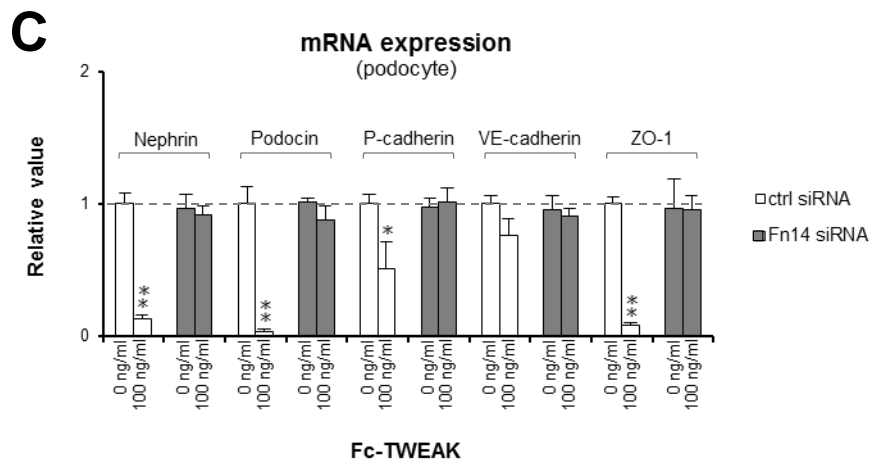
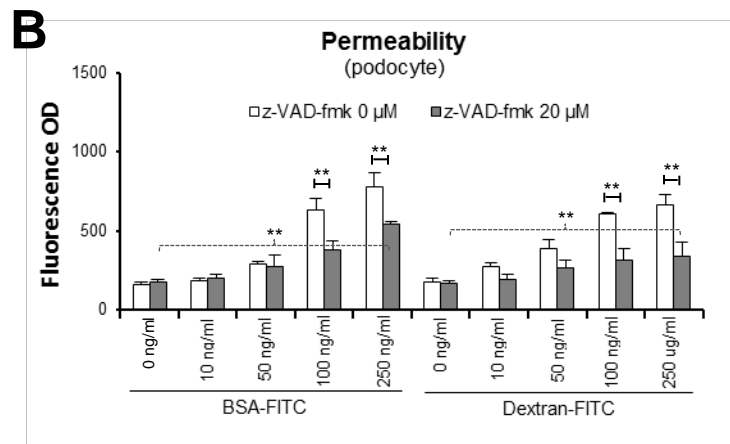
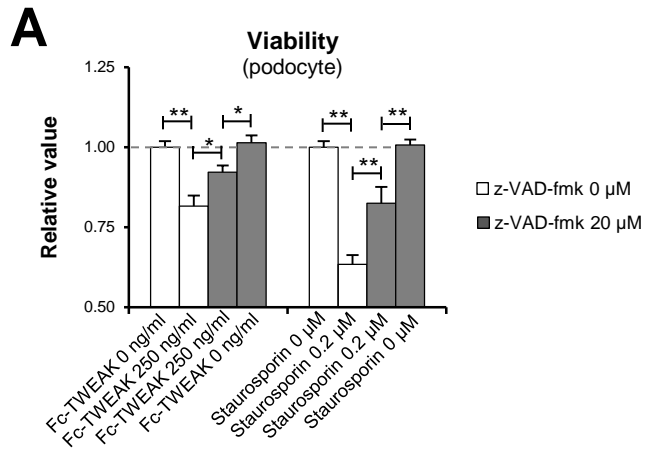


Supplemental Figure 1



Supplemental Table 1. Sequences of oligonucleotides

Oligonucleotide	Sequence
Fn14 primers	Forward: 5'-CTAGTTTCCTGGTCTGGAGAAGATG-3' Reverse: 5'-CCCTCTCCACCAGTCTCCTCTA-3'
TWEAK primers	Forward: 5'-CGAGCTATTGCAGCCCATTAT-3' Reverse: 5'-ACCTGCTTGTGCTCCATCCT-3'
Nephrin primers	Forward: 5'-AGCGTAATCCTCTCCATCCT-3' Reverse: 5'-ACACACAGGTGACCACATATTC-3'
Podocin primers	Forward: 5'-CGTCTCCAGACCTTGGAAATAC-3' Reverse: 5'-CACATGGGCTAGACTGCTTAG-3'
P-cadherin primers	Forward: 5'-CGAAAGAGAGAGTGGGTGATG-3' Reverse: 5'-CTTGGTGCCTCTGTCCTTATT-3'
VE-cadherin primers	Forward: 5'-CAGTGACAGAGGCCAATTCT-3' Reverse: 5'-GCCTCCACAGTCAGGTTATAC-3'
ZO-1 primers	Forward: 5'-CTGATGGTGCTCTGCCTAAT-3' Reverse: 5'-TAGTCGCAAACCCACACTATC-3'
IP-10 primers	Forward: 5'-GGCCATAGGGAAGCTTGAAA-3' Reverse: 5'-CAGACATCTCTGCTCATCATTCT-3'
MCP-1 primers	Forward: 5'-CTTCTATGCCTCCTGCTCATAG-3' Reverse: 5'-TTCCGGACGTGAATCTTCTG-3'
IL-3 primers	Forward: 5'-CTCAATGGGGAAGACCAAGA-3' Reverse: 5'-TCTCAATTGCTGATGCGTTC-3'
Fn14 siRNA	5'-UAAACUUUUCUCUCCGGCGGC-3'

Supplemental Table 2. Histological scoring systems

Index	Subcategories	Scales	Reference
Mesangial proliferation	Glomerular	0-4 scale (0 = absent, 1 = mild, 2 = mild to moderate, 3 = moderate, 4 = severe) (H&E and PAS staining)	<i>Clin Immunol.</i> 2012;145(2):108-21
Endocapillary hypercellularity	Glomerular [△]	0-4 scale (0 = absent, 1 = present in < 25% , 2 = present in 25–50% , 3 = present in 50–75%, 4 = present in > 75% of the section) (H&E staining)	<i>Clin Immunol.</i> 2012;145(2):108-21
Crescents	Glomerular	0-4 scale (same as [△]) (H&E staining)	<i>Clin Immunol.</i> 2012;145(2):108-21
Ki-67	Glomerular	The number of Ki-67+ cells in 20 glomeruli	/
	Tubular	The number of Ki-67+ cells/40× field	
Caspase-3	Tubular	0= no significant positivity (occasional positive lymphocytes) 1= rare tubular cell staining	/
Tubular trophy/casts/dilatation	Tubular	0-4 scale (same as [△]) (trichrome staining)	<i>Clin Immunol.</i> 2012;145(2):108-21
Interstitial fibrosis	Interstitial	0 =< 5%, 1 = 5-10%, 2 = 11-25%, 3 >= 25% (trichrome staining)	<i>J Am Soc Nephrol.</i> 2012;23(7):1229-37
KIM-1/TIM-1	Tubular	0 = no significant staining 1 = focal staining in proximal tubules (< 10% of tubes) 2 = patchy proximal tubular staining (10-50%) 3 = diffuse proximal tubular staining (> 50%)	/
Inflammation	Cortical (non-perivascular)	0-4 scale (same as [△]) (H&E and PAS staining)	<i>Clin Immunol.</i> 2012;145(2):108-21
	Perivascular	0-4 scale (same as [△]) (H&E and PAS staining)	
B220	Glomerular	0= no significant B220+ cells 1= multifocally up to 1-2 B220+ cells/glomerulus 2= multifocally up to 3-4 B220+ cells/glomerulus 3= multifocally > 4 B220+ cells in some glomeruli	/
	Perivascular	0 = no significant staining 1 = patchy mild B220+ cells partially surrounding at least 1 artery 2 = small cuffs of B220+ cells surrounding multiple arteries 3 = expansile cuffs of B220+ cells surrounding multiple arteries	
	Interstitial	0 = <5/600x field on average 1 = Scattered B220 cells in the interstitium (on average 5-15 per 600× field) 2 = Scattered B220+ cells in the interstitium (on average 15-30 per 600× field) 3 = Scattered B220+ cells in the interstitium (on average > 30 per 600× field)	
CD3	Glomerular	0= no significant CD3+ cellular infiltration 1= multifocally up to 1-2 CD3+ cells per glomerulus 2= multifocally up to 3-4 CD3+ cells per glomerulus 3= multifocally > 4 CD3+ cells per glomerulus	/
	Perivascular	0 = no significant staining 1 = patchy mild CD3 cells partially surrounding at least 1 artery 2 = small cuffs of CD3 cells surrounding multiple arteries 3 = expansile cuffs of CD3 cells surrounding multiple arteries	
	Interstitial	0 = no significant staining 1 = Scattered CD3 cells in the interstitium (on average < 15 per 600× field) 2 = Scattered CD3 cells in the interstitium (on average 15-30 per 600× field) 3 = Scattered CD3 cells in the interstitium (on average > 30 per 600× field)	
F4/80	Glomerular	0 = none or on average < 1 F4/80+ cell/glomerulus 1 = average 1-2 F4/80+ cells/glomerulus 2 = average 3-5 F4/80+ cells/glomerulus 3 = average > 5 F4/80+ cells/glomerulus	/
	Perivascular	0 = no significant staining 1 = patchy mild F4/80+ cells partially surrounding at least 1 artery 2 = small cuffs of F4/80+ cells surrounding multiple arteries 3 = expansile cuffs of F4/80+ cells surrounding multiple arteries	
	Interstitial	0 = none or on average < 1 F4/80+ cell in the interstitium per 600× field 1 = Scattered F4/80+ cells in the interstitium (on average 1 < 10 per 600× field) 2 = Scattered F4/80+ cells in the interstitium (on average 10-20 per 600× field) 3 = Scattered F4/80+ cells in the interstitium (on average > 20 per 600× field)	
Immune complex deposition	Glomerular	0 = no deposits visible by light microscopy 1 = segmental mesangial & glomerular capillary wall (GCW) 2 = global mild-moderate mesangial & segmental-global GCW 3 = prominent expansion of mesangium & global GCW deposits (trichrome/PAS staining)	<i>J Am Soc Nephrol.</i> 2012;23(7):1229-37
WT1	Glomerular	Average number of WT1+ cells per glomeruli (counting 10 glomeruli per section) (IHC)	<i>J Histochem Cytochem.</i> 2009;57(7):623-31