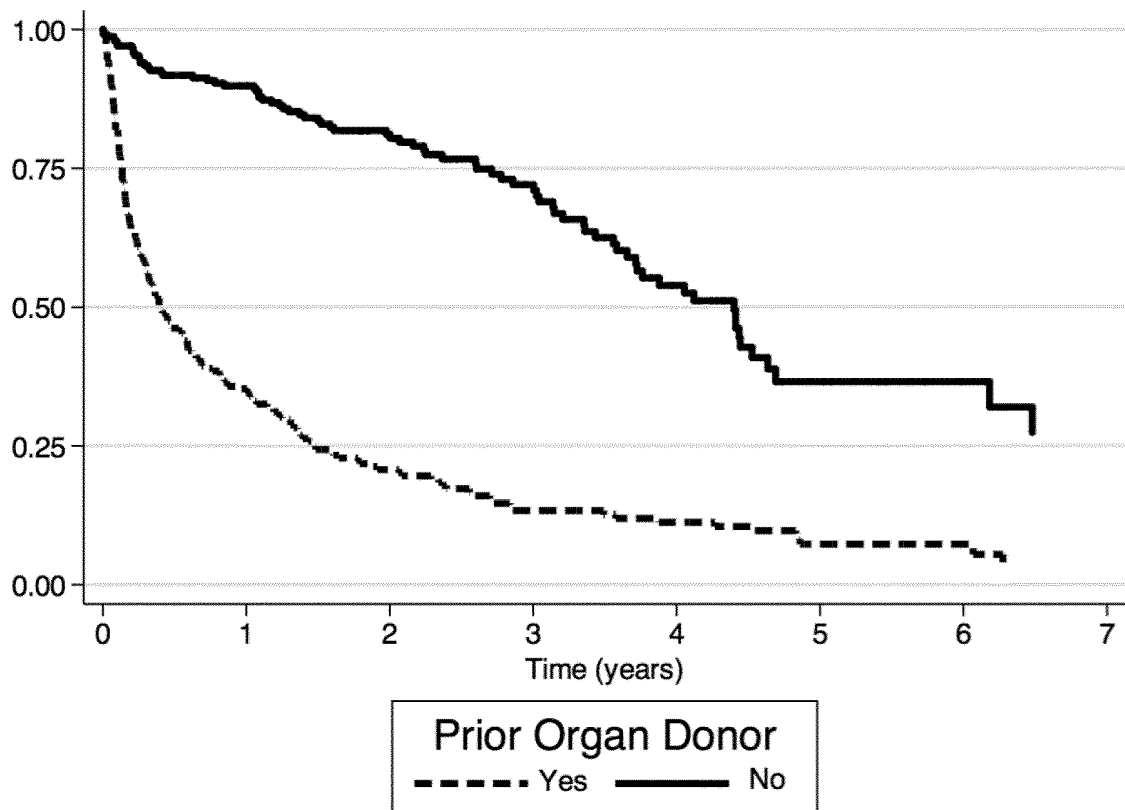


Appendices

Appendix 1: Dialysis status over time among prior live organ donors and matched controls listed for kidney transplantation in the United States

Year Listed for Kidney Transplantation	Number of prior donors on dialysis at listing (%)	Number of matched controls on dialysis at listing (%)
1996 - 1999	23 (72)	18 (60)
2000 - 2003	34 (72)	33 (83)
2004 - 2007	53 (65)	56 (69)
2008 - 2010	44 (56)	59 (67)

Appendix 2: Kaplan-Meier Estimates of Time to Deceased Donor Kidney Transplantation among Prior Organ Donors and Matched Non-donor Candidates (Censoring for death and living donor kidney transplantation)



Appendix 3: Sensitivity Analysis Estimating the Effect of an Unmeasured Confounder on the Hazard for Death

Prevalence among Donors	Prevalence among Non-Donors	Unmeasured Confounder HR	HR for death associated with prior live donor status after adjusting for Unmeasured Confounder (95% CI)
0.1	0.2	1.2	0.26 (0.11-0.58)
0.1	0.4	1.2	0.27 (0.11-0.60)
0.1	0.6	1.2	0.28 (0.12-0.63)
0.1	0.2	2.0	0.27 (0.12-0.62)
0.1	0.4	2.0	0.32 (0.14-0.72)
0.1	0.6	2.0	0.36 (0.16-0.83)
0.2	0.4	2.0	0.29 (0.13-0.67)
0.2	0.6	2.0	0.33 (0.15-0.76)
0.3	0.5	3.0	0.31 (0.14-0.71)
0.3	0.6	3.0	0.34 (0.15-0.78)
0.2	0.4	5.0	0.36 (0.16-0.82)
0.1	0.4	5.0	0.46 (0.20-1.06)

Abbreviations: HR—Hazard Ratio; CI—Confidence Interval