

Fig. 1

```
-----MKIAVIGQSLFGQEVYCHLR-KEGHEVVGVTVPDKD 36 human 1L1
-----MKIAVIGQSLFGQEVYKELK-NEGHMIVGVFTIPDKD 36 zebra fish 1L1
-----MKIAIIGQSLFGLEVYKEVK-KAGHEIVGIFTIPDKD 36 shark 1L1
-----MKIAVIGQSVFGAEVFRLLR-RNGHEIVGVFTIPDAN 36 sea hare 1L1
-----MKIAVIGQSMFGADTYNILR-KNGHKVVGVTIPDVG 36 sea squirt 1L1a
-----MKIAIIGQSAFGVDVYKELR-KNGHEIVVFTIPDKN 36 elegans 1L1
-----MPPVAVPEEPSKKKLRVAIIGQSTFAAEVFKLLQ-RDGHEVVGVTVLDKG 50 butterfly 1L1
-----MAQLKVAIIGQSNFAAEVYKLLK-LNGHQITGVFTIPDKG 39 honey bee 1L1
-----MALKMRIAIIIGQSNFAADVLELLLDRSNIQIVGVFTIPDKG 41 fruit fly 1L1
-MLRRGSQALRRFSTGRVYFKNKLLKALIGQSLFGQEVYSHLR-KEGHRVVGVTVPDKD 58 human 1L2
-MLRAAPRLLRTFCTSSAAVQHKLKALIGQSIFGQEVYNKLR-KEGHKVVGVFTVPDKN 58 chicken 1L2
-MLWTANTIMRKFSSSSVYYQNKLKALIGQSLFGQEVYTNLR-KQGHKVVGVFTVPDKD 58 zebra fish 1L2
-MLWAANQFIRKLSTSTVYYQNKLRLALIGQSLFGQEVYNNLR-KEGHKVVGVFTVPDRE 58 shark 1L2
MMWRAALIPKRLFATSQEYWANKMKIAVIGQSMFGADTYNILR-KNGHKVVGVTIPDVG 59 sea squirt 1L1b
::*:*** * . : . : : ** : *
```

Fig. 2

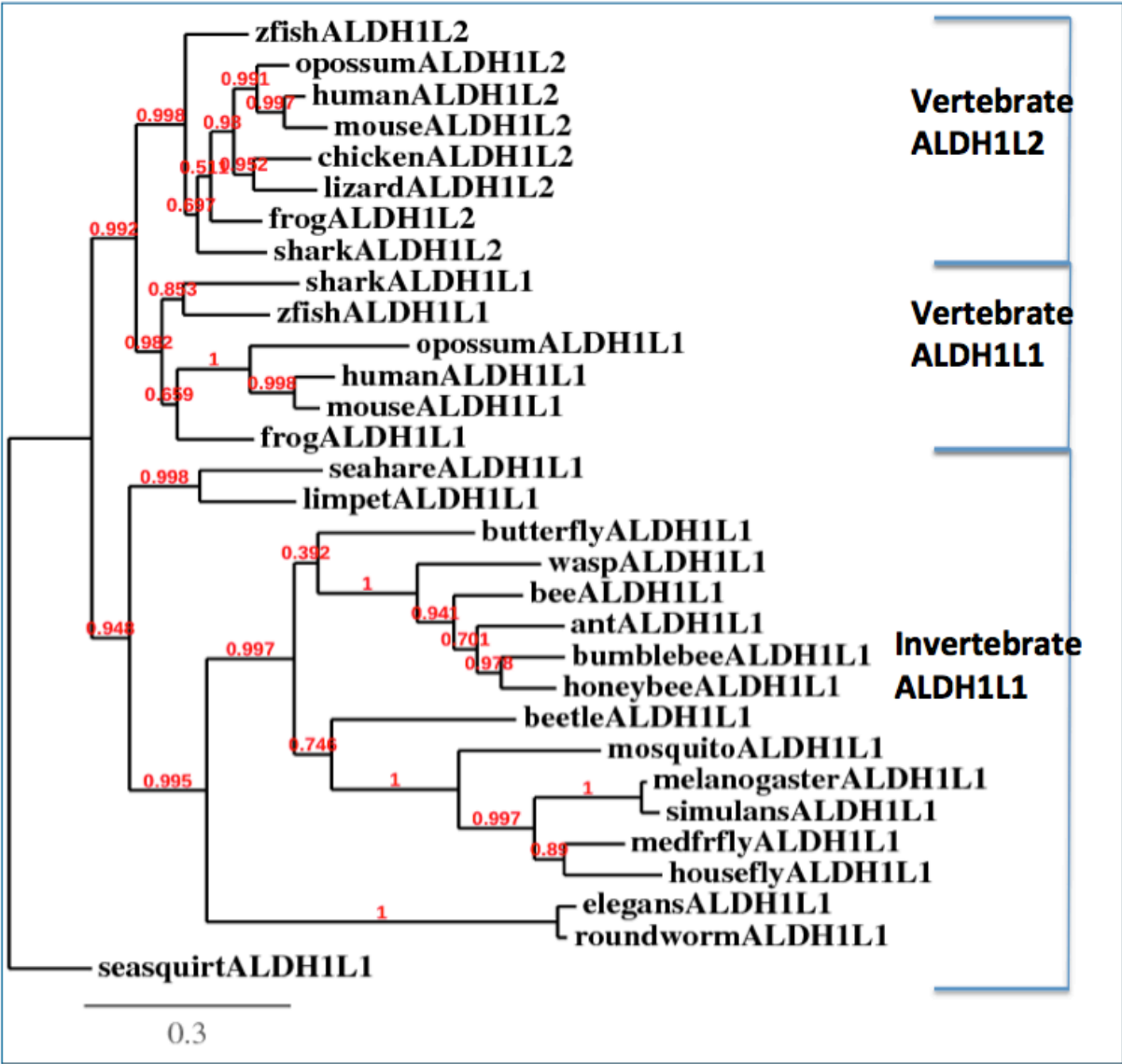
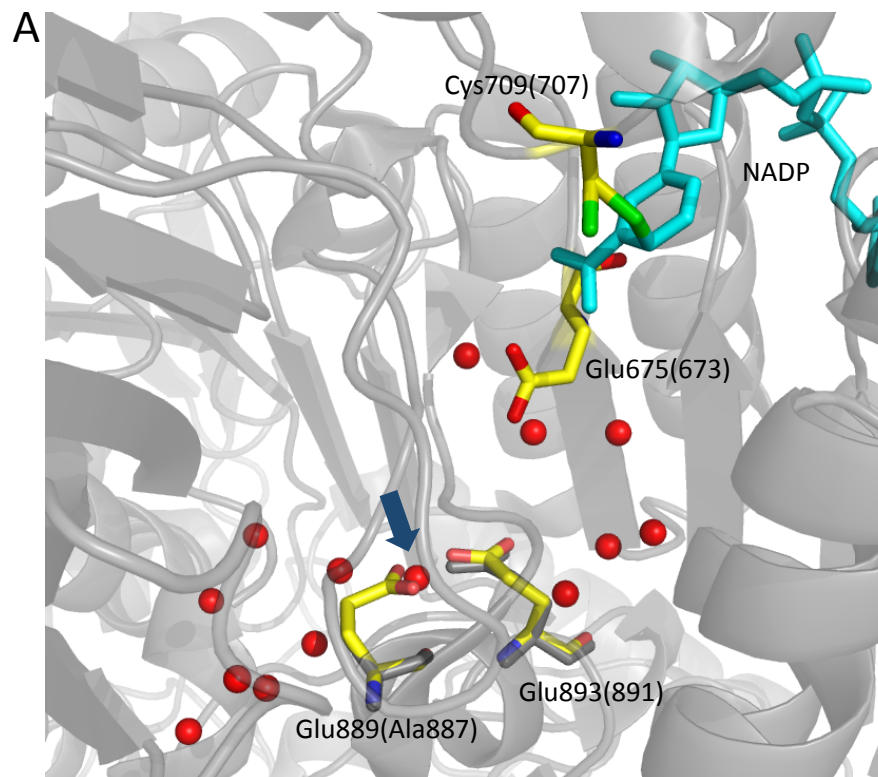


Fig. 3



**B**

humanALDH1L1	KQSGFGKDLGE <b>A</b> ALNEYLRVKTVTFEY	902
rataALDH1L1	KQSGFGKDLGE <b>A</b> ALNEYLRIKTVTFEY	902
mouseALDH1L1	KQSGFGKDLGE <b>A</b> ALNEYLRIKTVTFEY	902
frogALDH1L1	KQSGFGKDLGE <b>E</b> ALNEYLKTKAVTIEY	902
zfishALDH1L1	KQSGFGKDLG <b>Q</b> EALNEYLKTKCVTVEY	904
seasquirtALDH1L1	KQSGFGKDLGE <b>D</b> ALNEYLKTKAVTLEY	898
humanALDH1L2	KQSGFGKDLGE <b>E</b> ALNEYLKTKVTLEY	923
mouseALDH1L2	KQSGFGKDLGE <b>E</b> ALNEYLKIKTVTLEY	923
frogALDH1L2	KQSGFGKDLGE <b>E</b> ALHEYLRTKAVTVEY	922
zfishALDH1L2	KQSGFGKDLGE <b>D</b> ALHEYLRTKAVTVEY	923
	*****: *.**.*: * **.*	

Fig. 4

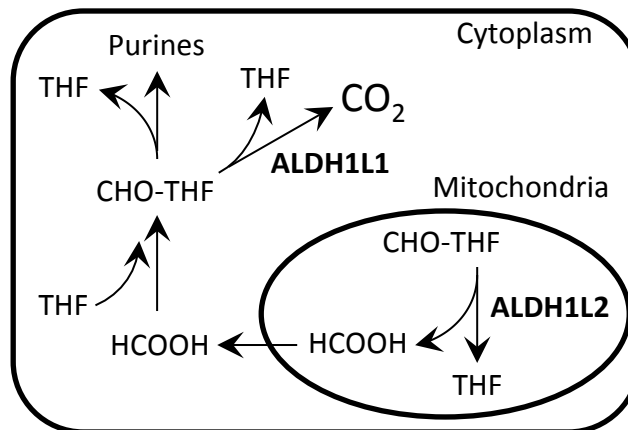


Fig. 5

