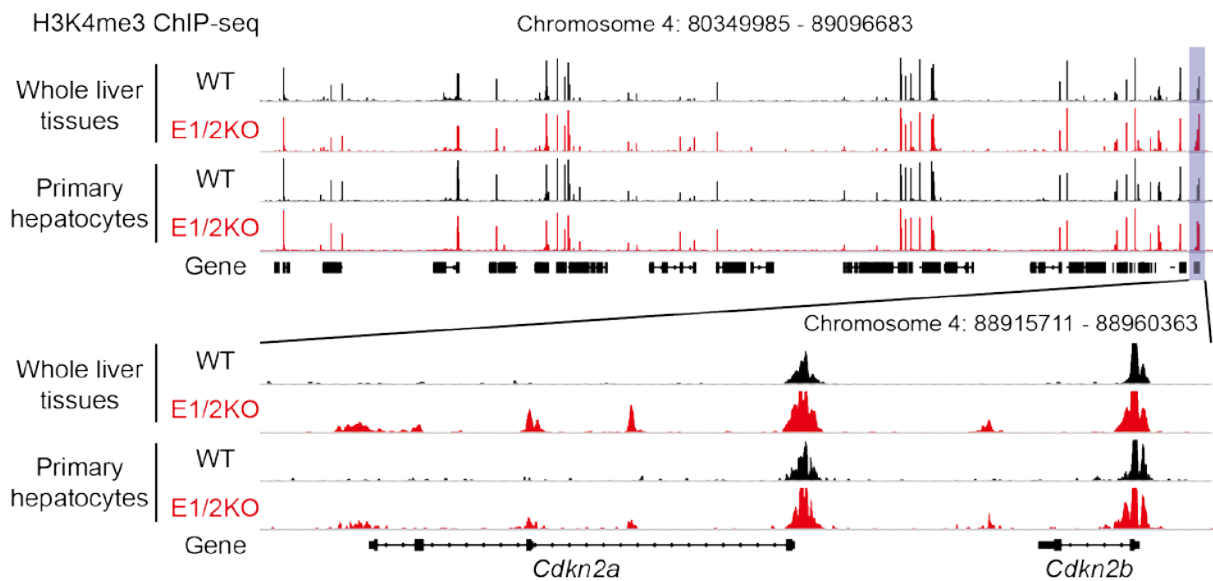


Supplemental Figure 1. Histological abnormalities in E1/2KO mice. Immunofluorescence staining with CD4, CD45r and F4-80, inflammatory cell markers. Representative images show the accumulation of CD4, CD45r and F4-80-positive cells in E1/2KO livers. Nuclei counterstained with DAPI.



Supplemental Figure 2. Changes in H3K4me3 levels between whole liver tissues and primary hepatocytes in WT and E1/2KO mice. Overall patterns of H3K4me3 levels on a large locus (> 70 Mbps) were similar across all samples (top). Specific increase of H3K4me3 marks near the *Cdkn2a* and *Cdkn2b* genes in E1/2KO were observed in whole liver tissues and primary hepatocytes (bottom).