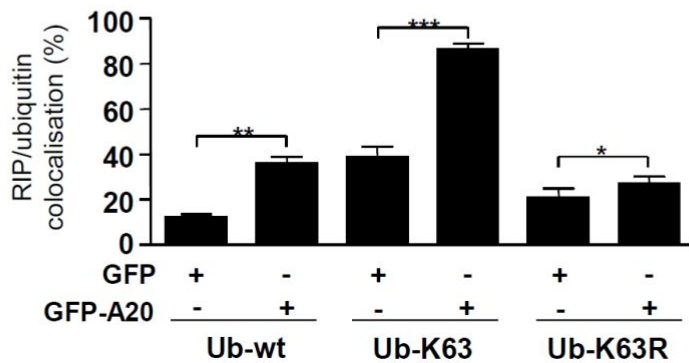


Supplementary Figure 5
K63 polyubiquitin
promotes RIP1/A20 co-
localisation.

HeLa cells were co-transfected with GFP-A20 (or with GFP alone as a control), E-RIP and a HA-tagged version of wild-type ubiquitin (Ub-wt), Ub-K63 or Ub-K63R. The intracellular localisation of signalling molecules was assessed by immunofluorescent staining using anti-E (purple) and anti-HA (red) antibodies. Representative images are shown. Co-localisation coefficients were calculated from 30 cells using Carl Zeiss software. Data pooled from two experiments are shown as mean values \pm standard deviations.



Supplementary Figure 6

Model of the ubiquitin editing (left) and aggresome-dependent (right) mechanisms used by A20 to inhibit RIP signalling.

