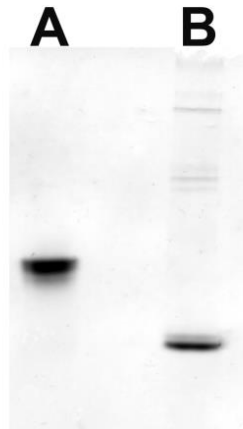


**Additional file 1:**

**Electrophoretic analysis of QueD proteins.**

**Figure S1. Strep-tagged Ni-QueD from recombinant *E. coli* (A), and QueD isolated from *Streptomyces* sp. FLA (B).**



Native polyacrylamide gel electrophoresis (PAGE) was performed on a 10% polyacrylamide gel; the gel was stained with Coomassie blue. The identity of the protein isolated from the wild-type *Streptomyces* strain was verified by in-gel tryptic digestion and MALDI-MS analysis.