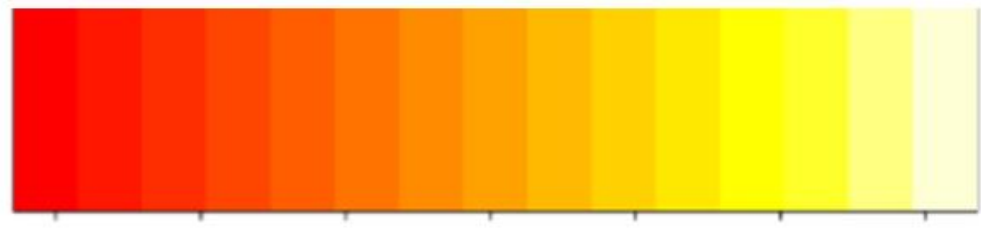


Color Key (log(PRR))



-4 -2 0 2 4 6 8

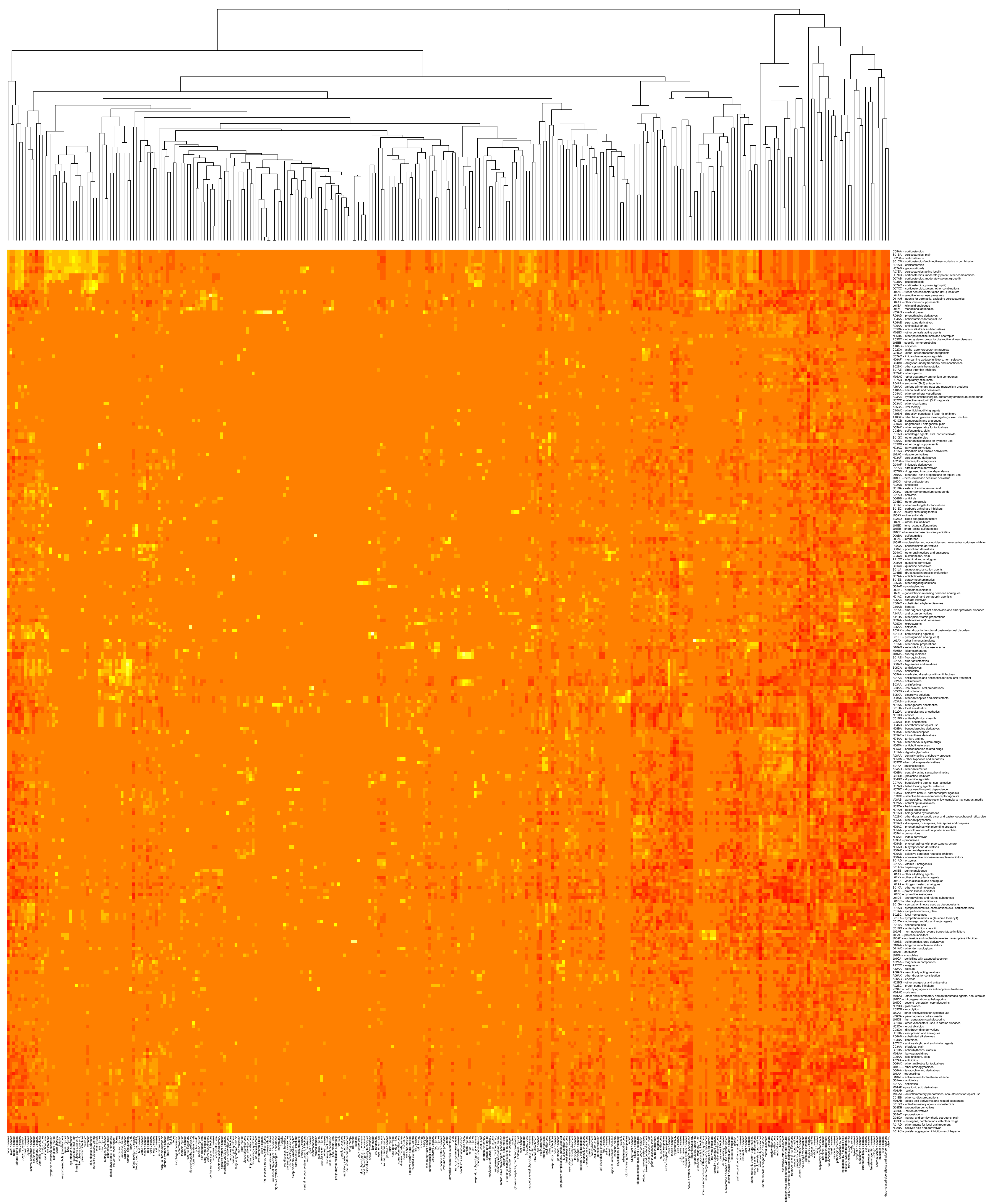


Fig. 2. Heat map of drug classes and ADE classes(based on the class signals)

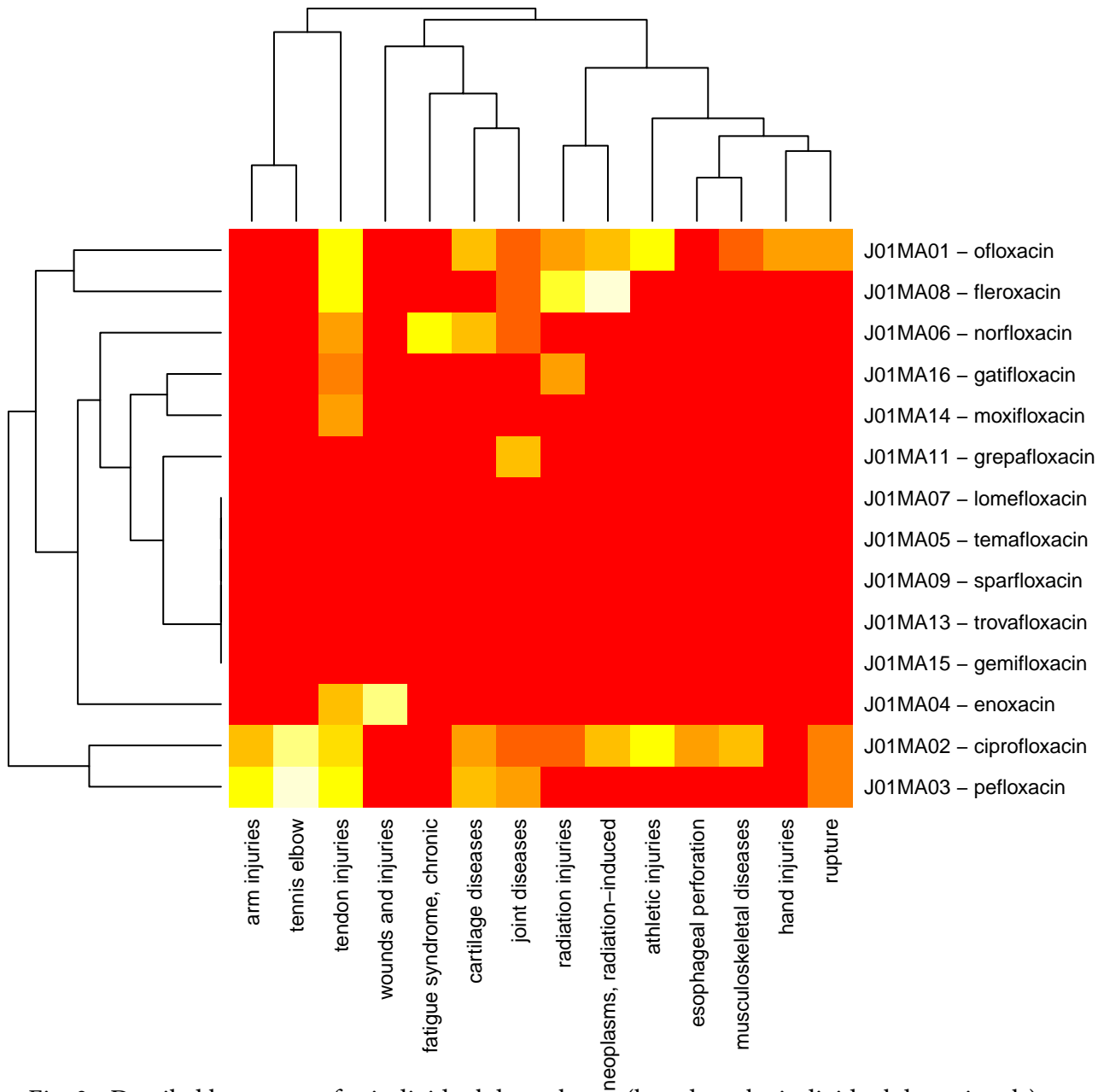


Fig. 3. Detailed heap maps for individual drug classes (based on the individual drug signals) Fluoroquinolones, ADE classes and drugs

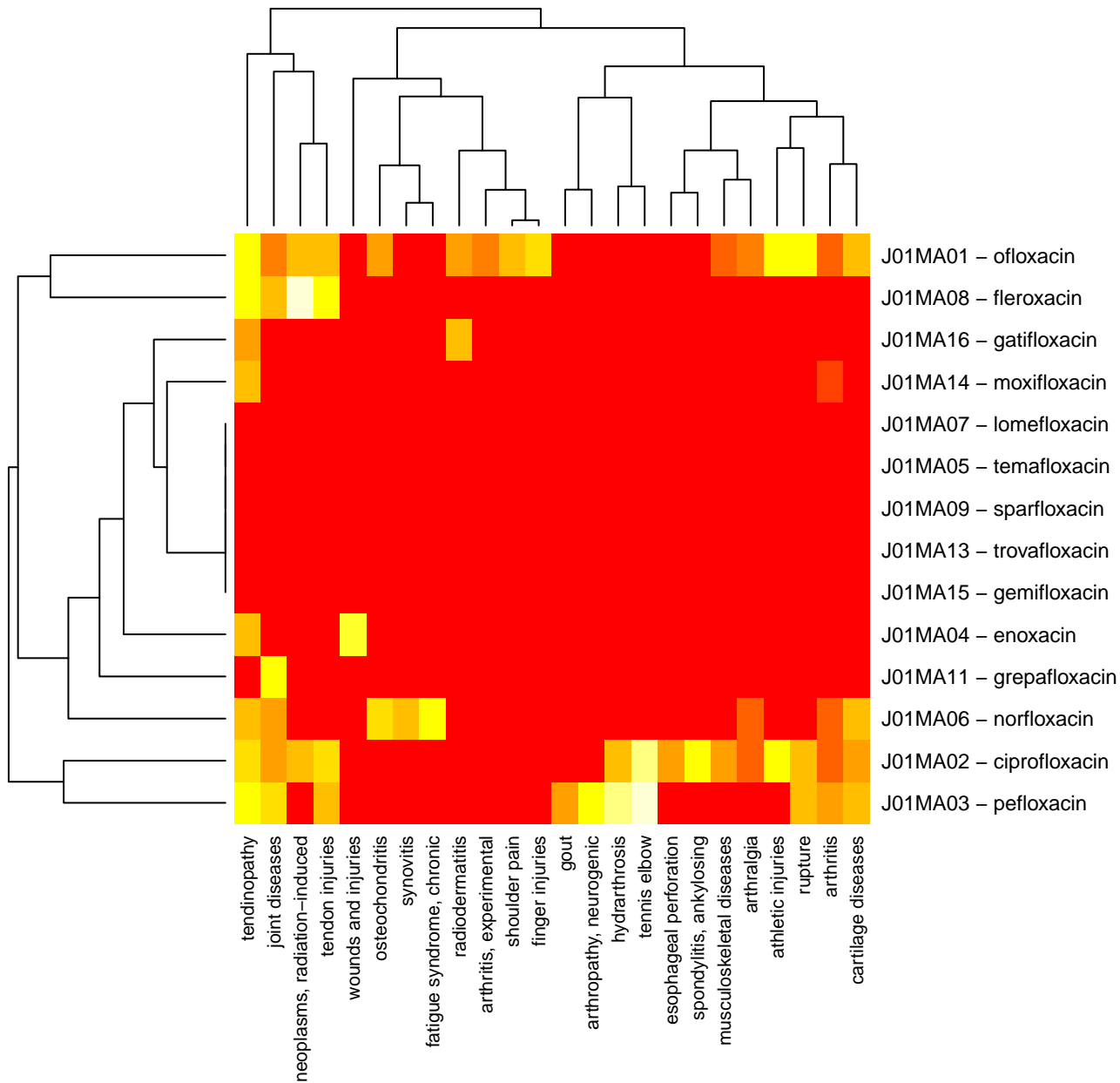


Fig. 3. Detailed heap maps for individual drug classes (based on the individual drug signals)
Fluoroquinolones, ADEs and drugs

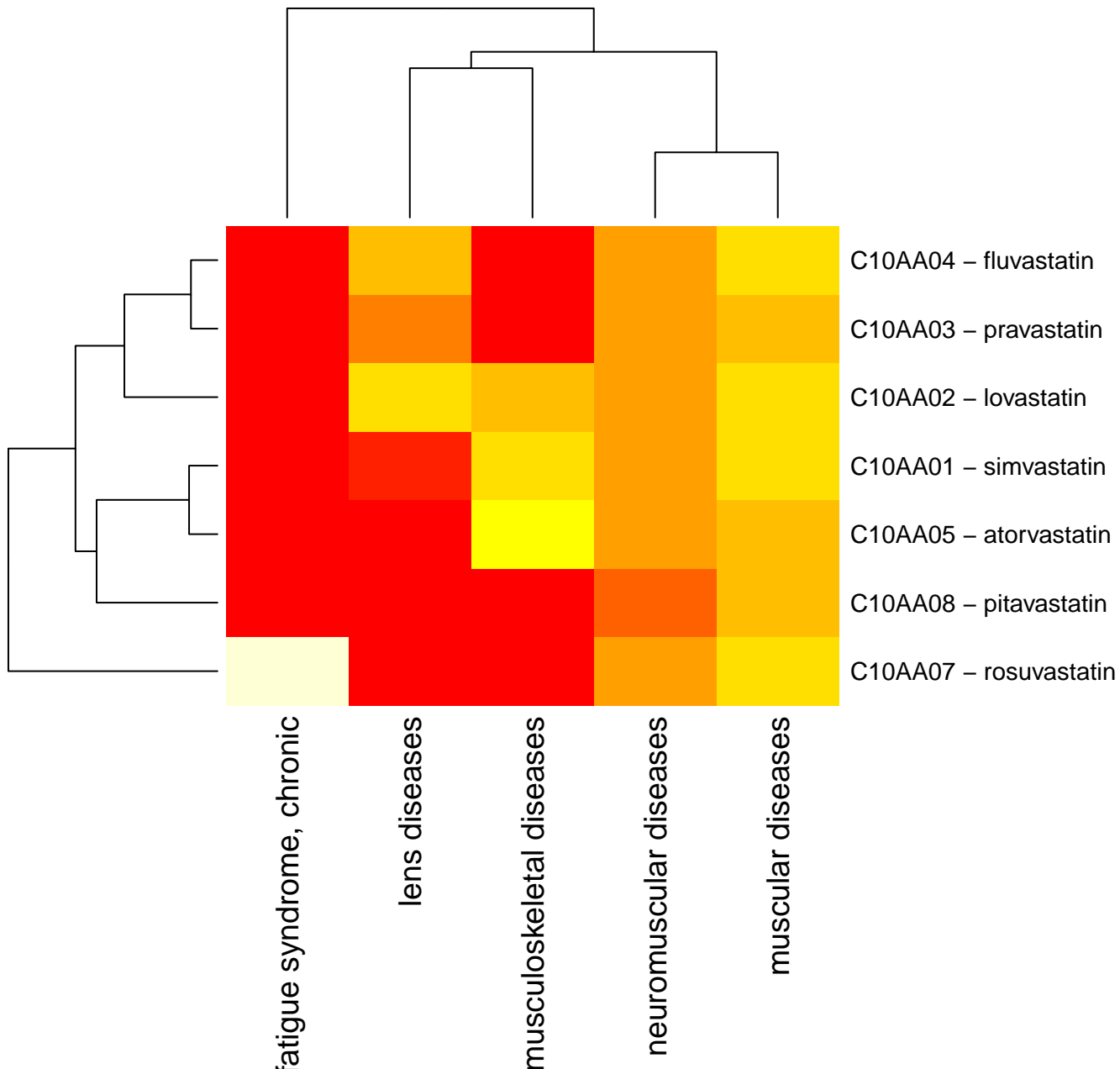


Fig. 3. Detailed heap maps for individual drug classes (based on the individual drug signals)
 Statins, ADE classes and drugs

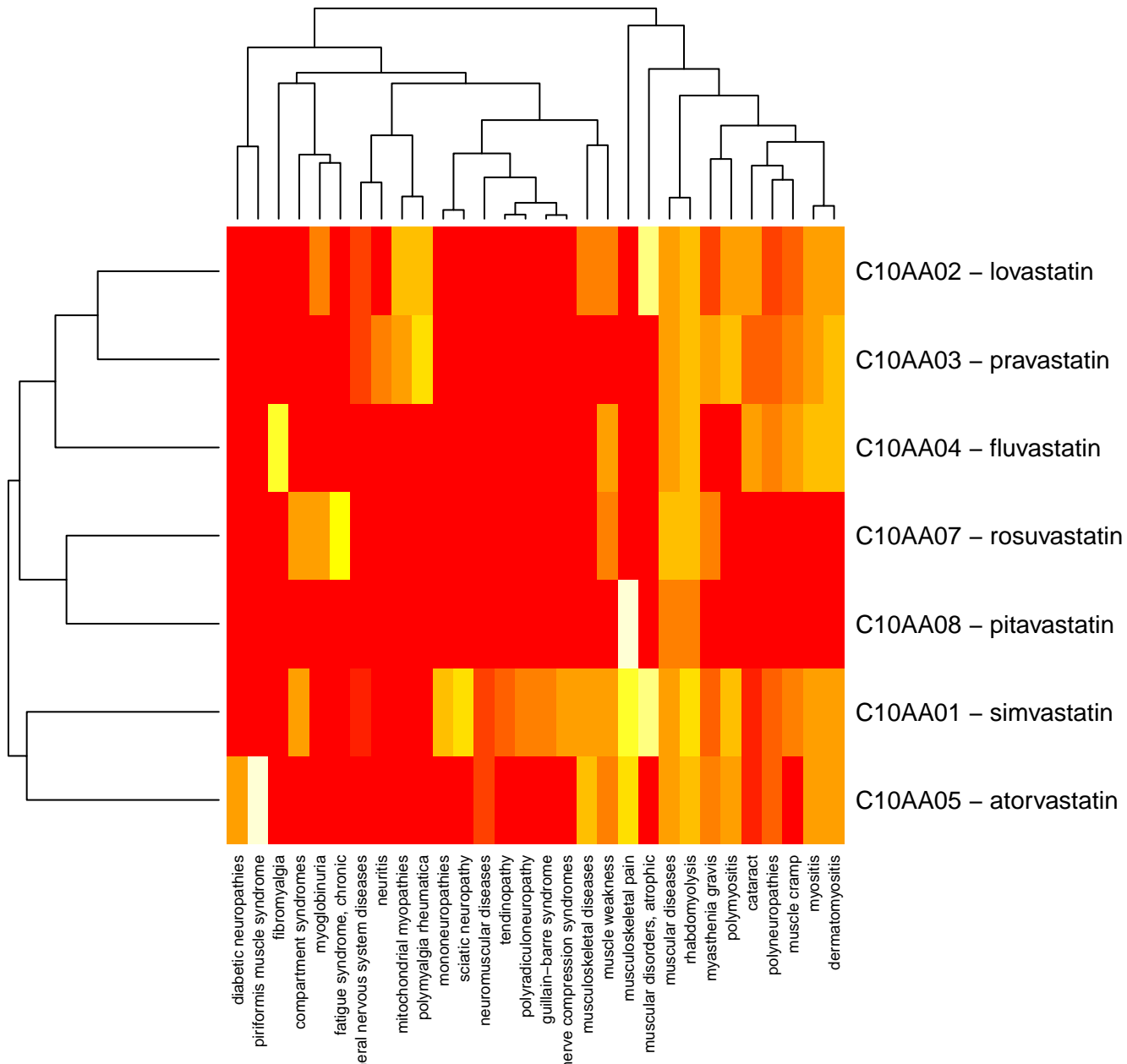


Fig. 3. Detailed heap maps for individual drug classes (based on the individual drug signals)
 Statins, ADEs and drugs