

Figure S6

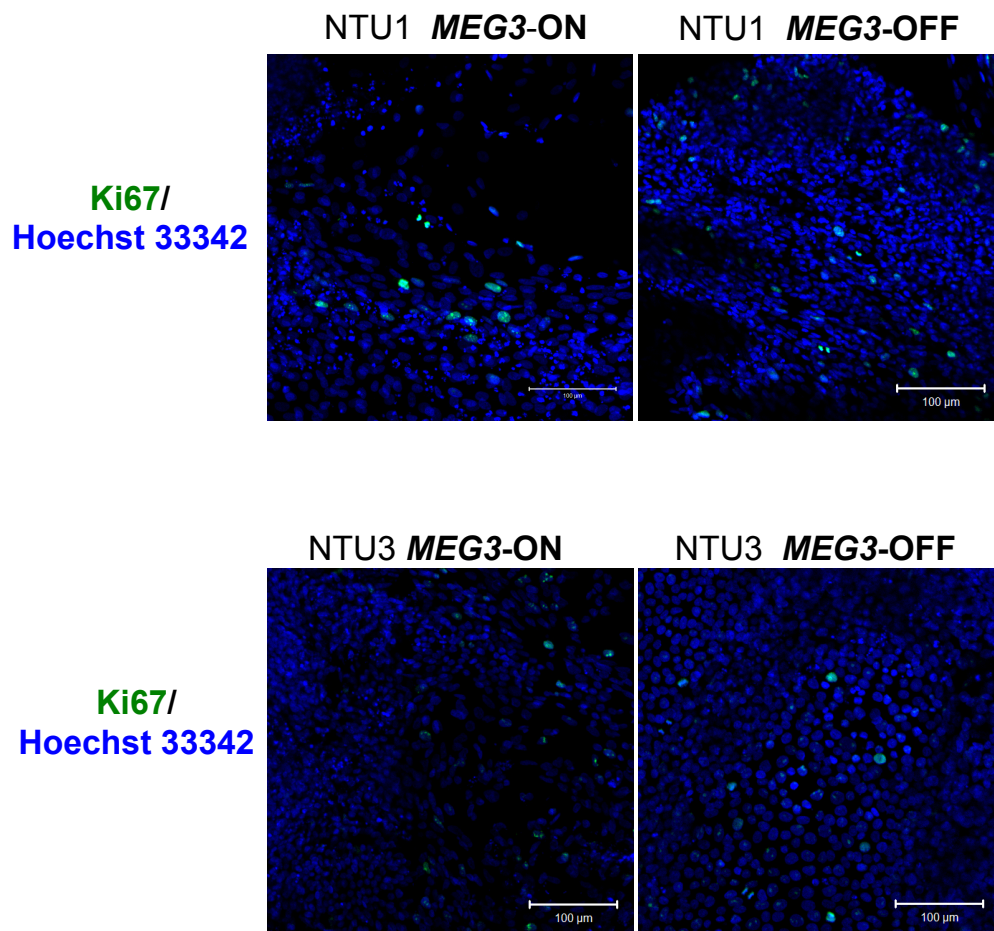


Figure S6. Ki67 staining for the *MEG3-ON* and *MEG3-OFF* hESC-differentiated neural lineage-like cells after 18 days on Matrigel.

The numbers of Ki67 positive-stained cells were not obviously different between the *MEG3-ON* and *MEG3-OFF* hESC-differentiated cells, suggesting those observed differentiation defects seemed not linked to the change in cellular proliferation. Scale bars, 100 μm.