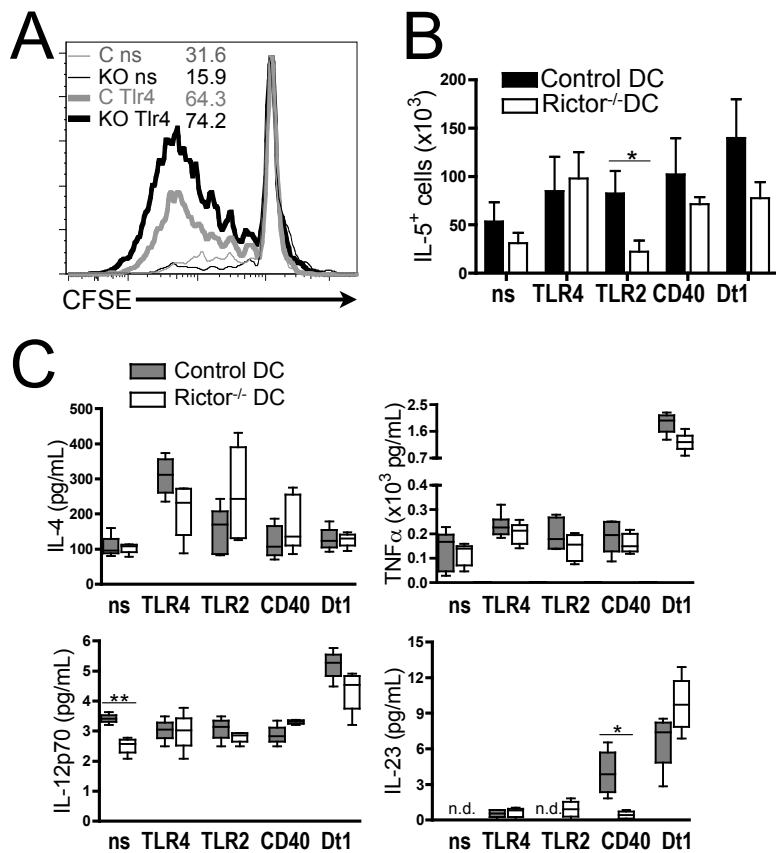


Supplementary Figure 1



Supplementary Figure 1.

TLR4-stimulated Rictor^{-/-} DC promote enhanced T cell proliferation, without expanding Th2 cells. (A) Representative histogram of proliferating T cells co-cultured with DC for 4d. Proliferation percentages are shown for each condition. (B) Non-stimulated (ns), TLR4/2-, CD40- or Dectin-1-stimulated DC from WT or Rictor^{-/-} mice were used as stimulators of CD3⁺ BALB/c T cells in 4d CFSE-MLR. Data show absolute numbers of IL-5-producing CD4⁺ T cells. Bars are means + 1SD of n = 3-6 independent experiments. (C) Cytokines in MLR supernatants were assessed by cytokine bead array. Data are from n = 3-4 independent experiments. n.d. = not detected. * $P < 0.05$, ** $P < 0.01$.