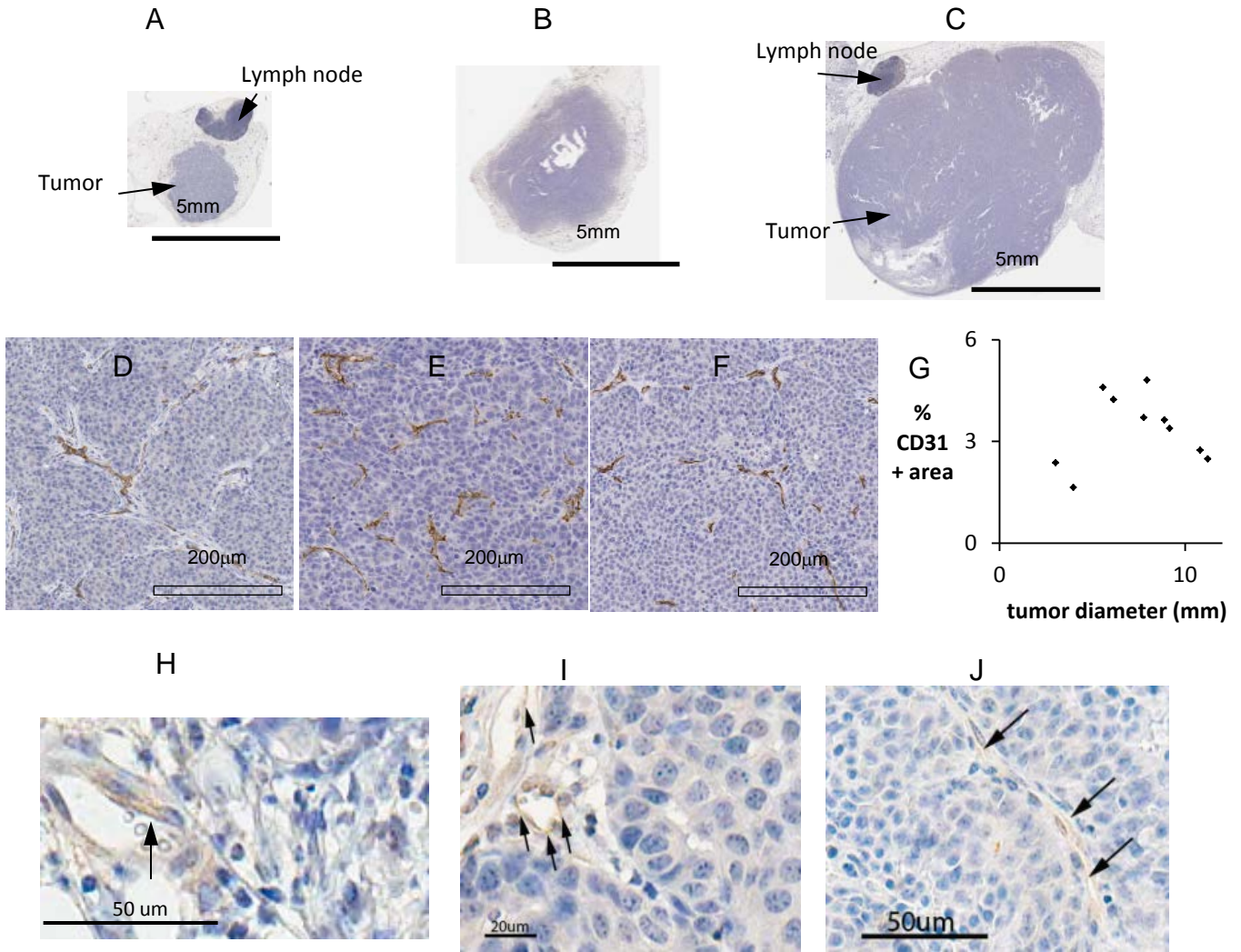


**SUPPLEMENTARY FIGURE 1** Experimental setup for MB binding and inhibition study using the cell line PPC-1. A cell plate was sandwiched between two metal plates. After microbubbles were applied to the open space above the cell plate, a glass cover slip was used to seal the chamber. Then, the sealed chamber was flipped so that the cell plate was on the top, and the microbubbles reached the cell plate by floatation. This flipped chamber was incubated for 5 min at 37°C; the glass cover slip was then removed, and the cell plate was washed 3 times with PBS, and imaged under a microscope.



**SUPPLEMENTARY FIGURE 2** Immunohistochemistry for the NDL tumor line used in this study. CD31 expression for A) 2.9 mm, B) 5.1 mm and C) 9.7 mm tumors with magnified views provided in D), E) and F), respectively. G) Quantification of the area encompassed by CD31+ cells. H-J) NRP expression on the vascular wall (arrows) in tumors with a diameter of 2.9, 5.1 and 9.7 mm, respectively.