

Embryogenesis

Premetamorphosis

Metamorphosis

End of metamorphosis

TR: little

high

high

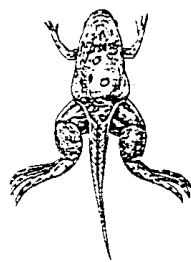
low

T3: little

little

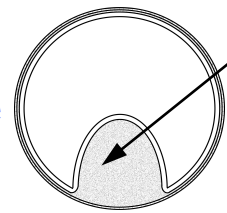
low to high

low



Intestine

Stage

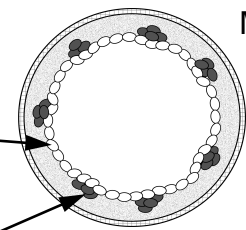


51

Typhlosole

Apoptotic cells

Proliferating cells
(Progenitor/Stem cells)

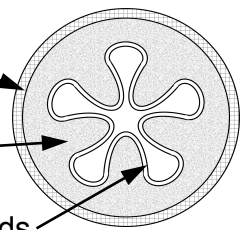


61

Muscles

Connective tissue

Epithelial folds



66