

Supplemental Material

Table S1. Predicted reaction of *Listeria* spp. on RAPID'L.mono agar.

Species	PIPLC	Xylose	Colony on RAPID'L.mono	Other characteristics ^a	Origin	Reference
<i>L. monocytogenes</i>	+	-	Blue colonies on red	Haemolytic		BIORAD
<i>L. ivanovii</i>	+	+	Blue colonies on yellow	Haemolytic		BIORAD
<i>L. welshimeri</i>	-	+	White colonies on yellow			BIORAD
<i>L. innocua</i>	-	-	White colonies on red			BIORAD
<i>L. seegligeri</i>	-	-	White colonies on red	Haemolytic		BIORAD
<i>L. grayi</i>	-	-	White colonies on red			BIORAD
<i>L. rocourtiae</i>	-	+	White colonies on yellow	Non-haemolytic, API profile 7630, Doumith multiplex PCR negative	Austria (lettuce)	Leclercq et al. 2010
<i>L. marthii</i>	-	-	White colony on red	Non-haemolytic, API code 6110, Doumith only prs amplicon (type L), no virulence genes, motile	Environmental samples (soil, water), New York	Graves et al. 2010, Sauters et al. 2012
<i>L. fleischmannii</i>	-	+	White colonies on yellow	Non-haemolytic, no CAMP, non-motile	Swiss cheese	Bertsch et al. 2013
<i>L. weihenstephanensis</i>	-	+	White colonies on yellow	Non-haemolytic, similar to <i>L. rocourtiae</i> , API code 2710, ALOA no PIPLC activity, no CAMP	Water plant (Germany)	Halter et al. 2013
<i>L. fleischmannii</i> subsp. <i>coloradonensis</i> subsp. nov.	-	+	White colonies on yellow	Non-motile, API <i>L. innocua</i> , related to Lf	Soil (cattle ranch), Colorado	Den Bakker et al. 2013
<i>L. floridensis</i> sp. nov.	-	+	White colonies on yellow	Non-motile, API profile 2710, no nitrate reduction	Running water, Florida	Den Bakker et al. 2014
<i>L. aquatica</i> sp. nov.	-	+	White colonies on yellow	Non-motile, no growth at 7°C, API 6731, maltose negative	Running water Florida	Den Bakker et al. 2014
<i>L. cornellensis</i> sp. nov.	-	+	White	Non-motile, API	Water, Colorado	Den

			colonies on yellow	2330		Bakker et al. 2014
<i>L. grandensis</i> sp. nov.	-	+	White colonies on yellow	Non-motile, API 2730	Water from Grand country, Colorado	Den Bakker et al. 2014
<i>L. riparia</i> sp. nov.	-	+	White colonies on yellow	Non-motile, API 6710	Running water, Florida	Den Bakker et al. 2014

a – API refers to the strain profile in the BioMerieux API-Listeria kit

References.

- Bertsch D, Rau J, Eugster MR, Haug MC, Lawson PA, Lacroix C, Meile L.** 2013. *Listeria fleischmannii* sp. nov., isolated from cheese Int. J. Syst. Evol. Microbiol. **63**: 526–532 DOI 10.1099/ijs.0.036947-0
- den Bakker HC, Warchocki S, Wright EM, Allred AF, Ahlstrom C, Manuel CS, Stasiewicz MJ, Burrell A, Roof S, Strawn LK, Fortes E, Nightingale KK, Kephart D, Wiedmann M.** 2014. *Listeria floridensis* sp. nov., *Listeria aquatica* sp. nov., *Listeria cornellensis* sp. nov., *Listeria riparia* sp. nov. and *Listeria grandensis* sp. nov., from agricultural and natural environments. Int. J. Syst. Evol. Microbiol. **64**:1882-1889. doi: 10.1099/ijs.0.052720-0
- Graves LM, Hesel LO, Steigerwalt AG, Morey RE, Daneshvar MI, Roof SE, Orsi RH, Fortes ED, Milillo SR, den Bakker HC, Wiedmann M, Swaminathan B, Sauders BD.** 2010. *Listeria marthii* sp. nov., isolated from the natural environment, Finger Lakes National Forest. Int. J. Syst. Evol. Microbiol. **60**: 1280–1288. DOI 10.1099/ijs.0.014118-0
- Halter EL, Neuhaus K, Scherer S.** 2013. *Listeria weihenstephanensis* sp. nov., isolated from the water plant *Lemna trisulca* taken from a freshwater pond. Int. J. Syst. Evol. Microbiol. **63**: 641–647. DOI 10.1099/ijs.0.036830-0
- Leclercq A, Clermont D, Bizet C, Grimont PAD, Le Fleche-Matos A, Roche SM, Buchrieser C, Cadet-Daniel V, Le Monnier A, Lecuit M, Allerberger F.** 2010. *Listeria rocourtiae* sp. nov. Int. J. Syst. Evol. Microbiol. **60**: 2210–2214 DOI 10.1099/ijs.0.017376-0
- Sauders BD, Overvest J, Fortes E, Schukken Y, Lembo A, Windham K, Wiedmann M.** 2012. Diversity of *Listeria* species in urban and natural environments. Appl. Environ. Microbiol. **78**: 4420-4433 doi:10.1128/AEM.00282-12

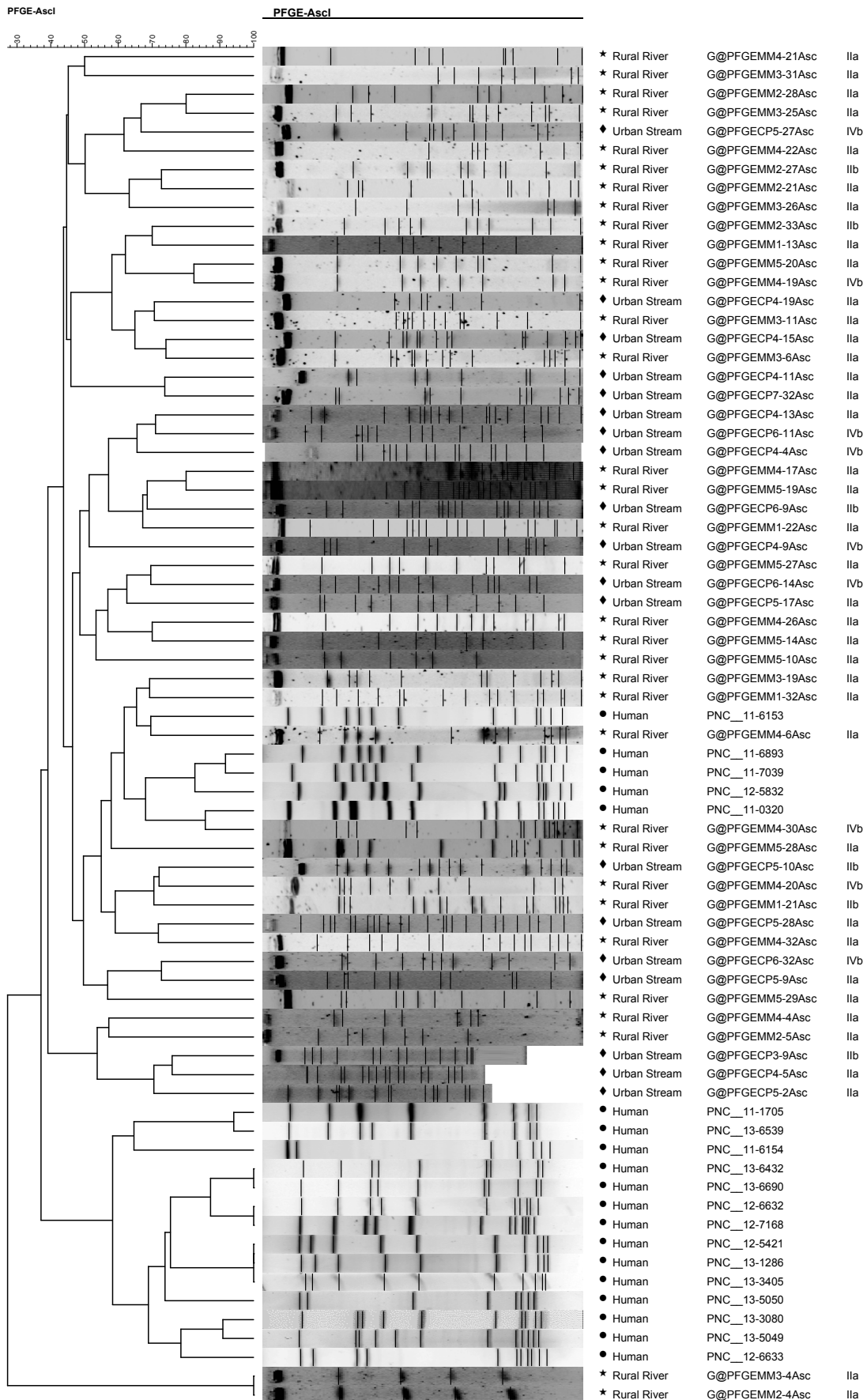


Figure S1. UPGMA clustering analysis of *AscI* PFGE patterns from all isolates using the Dice coefficient with a tolerance of 1.5%. *L. monocytogenes* NS human food borne outbreak isolates are labeled as “Human”, MR *L. monocytogenes* isolates are labeled as “Rural River” and LF isolates are labeled as “Urban Stream”.

PFGE-ApaI

PFGE-ApaI

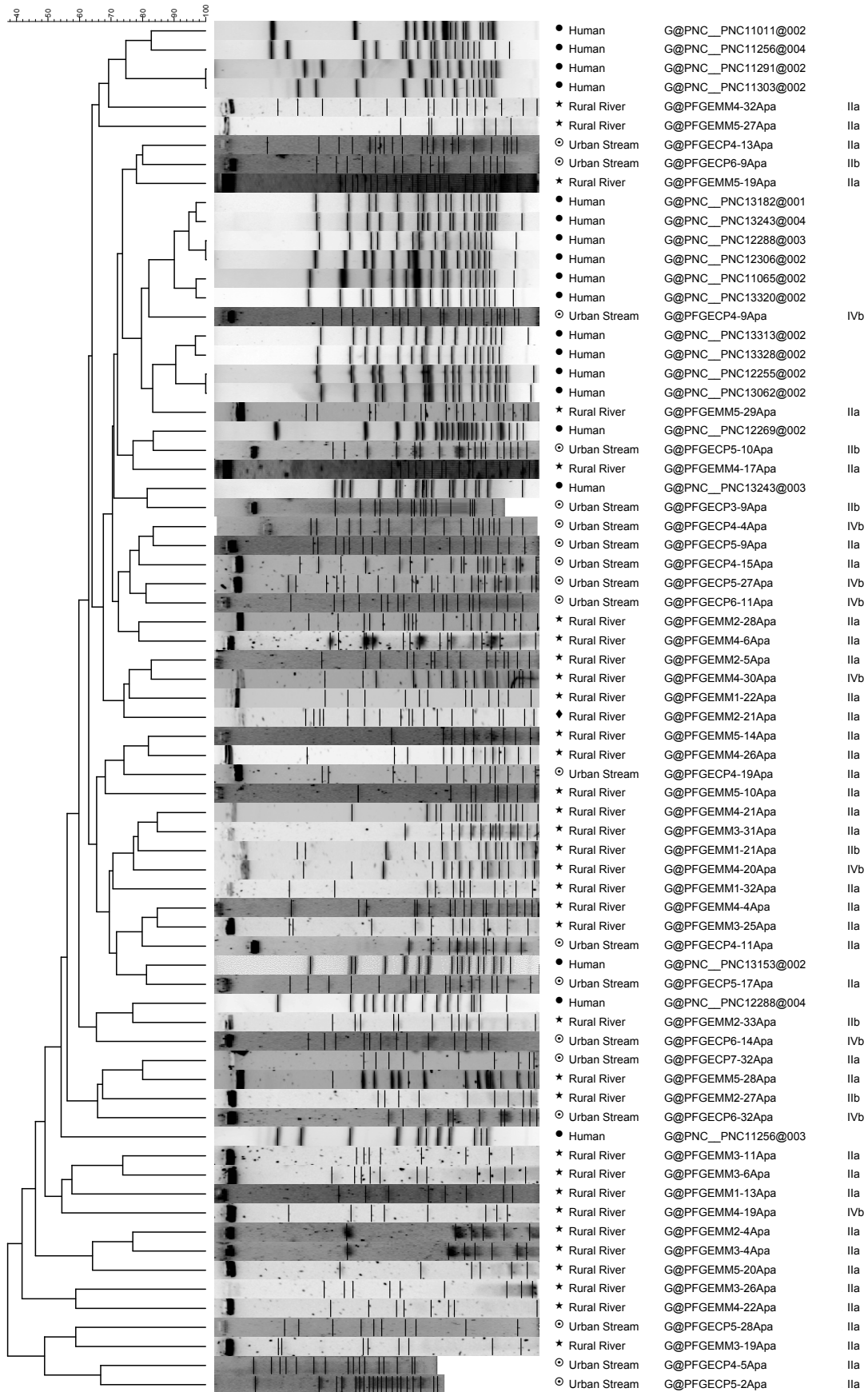


Figure S2. UPGMA clustering analysis of ApaI PFGE patterns from all isolates using the Dice coefficient with a tolerance of 1.5%. *L. monocytogenes* NS human food borne outbreak isolates are labeled as “Human”, MR *L. monocytogenes* isolates are labeled as “Rural River” and LF isolates are labeled as “Urban Stream”.