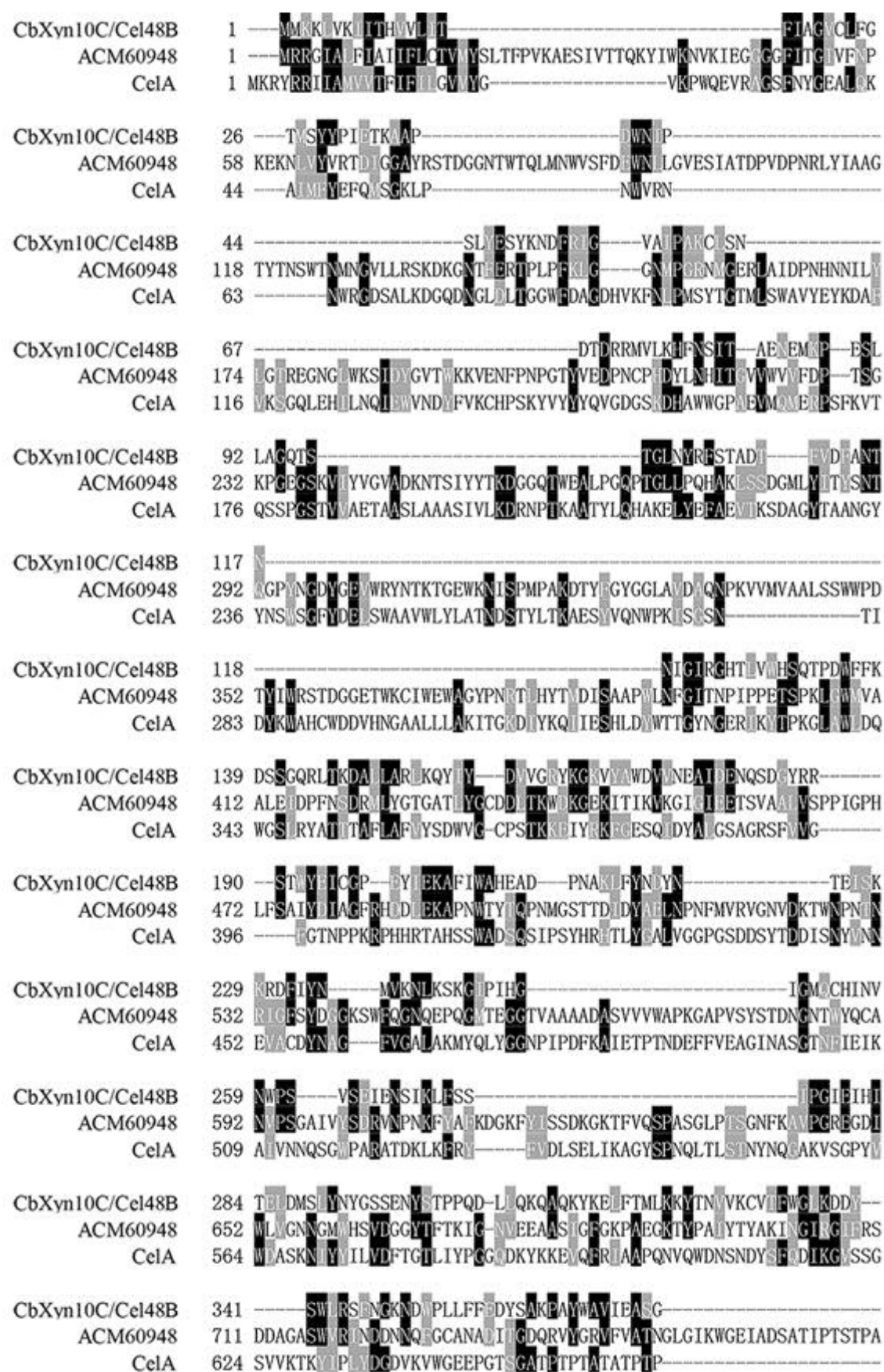


1 Supplemental materials



2

3

4 **Supplemental Fig. 1** Amino acid sequence alignment of the three *C. bescii* multimodular enzymes containing a GH48 module.

5 CbXyn10C/Cel48B (GenBank accession number: ACM60945) is the full polypeptide bearing CbXyn10C at the N-terminus

6 with two consecutive CBM3bs and one GH48 module at the C-terminus. ACM60948 is CbXyl74A/Cel48C with a putative

7 GH74 xyloglucanase at the N-terminus and two CBM3bs and one GH48 module at the C-terminus. CelA is the highly active

8 cellulase CbCel9A/Cel48A (GenBank accession number: ACM60955) with an endo-glucanase Cel9A at the N-terminus and

9 two CBM3bs and one GH48 at the C-terminus. Note that CbXyn10C/CbXyl74A/(CbCel9A/CBM3c), CBM3b-1, CBM3b-2,

10 and GH48s are separated by PT-rich linkers.

