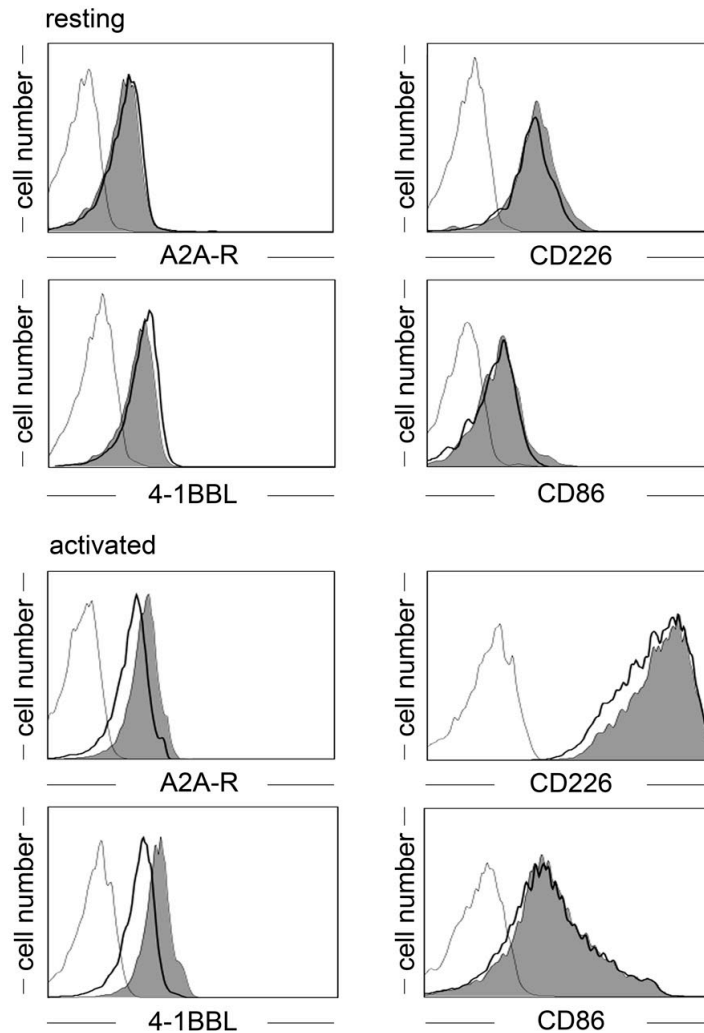


## Supplemental Figure S2



**SUPPLEMENTAL FIGURE S2. STAT3C<sup>+</sup> T-cells do not show up-regulation of Tr1-associated surface molecules.** Surface expression of the indicated molecules of STAT3C-transduced (black line) or control-vector transduced T-cells (grey histograms) either in a resting state or 24 hours after anti-CD3/anti-CD28 stimulation. Fine grey lines represent staining with isotype-matched control antibodies. One representative experiment out of four is depicted.