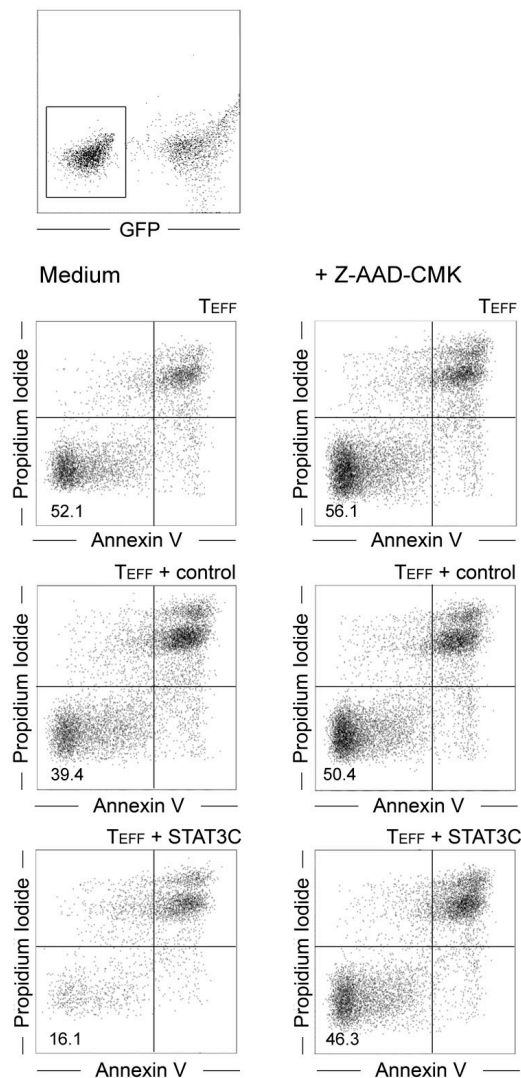


### Supplemental Figure S3



**SUPPLEMENTAL FIGURE S3. Granzyme B-dependent induction of cell death conferred by STAT3<sup>+</sup> T-cells.** Viability of GFP-negative T<sub>EFF</sub> was determined upon coculture with the indicated T-cells in the absence (left panel) or presence (right panel) of the granzyme B inhibitor Z-AAD-CMK by flow cytometry by quantification of cells negative for annexin V and propidium iodide. Numbers indicate percentage of viable cells in respective quadrant. Figure shows one representative experiments out of 6 performed.