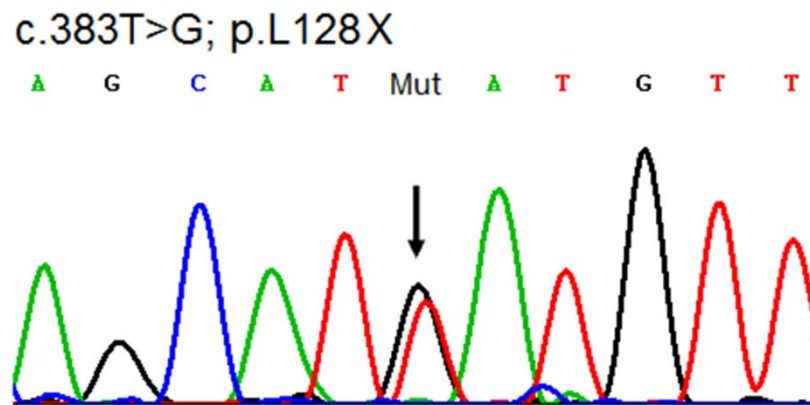
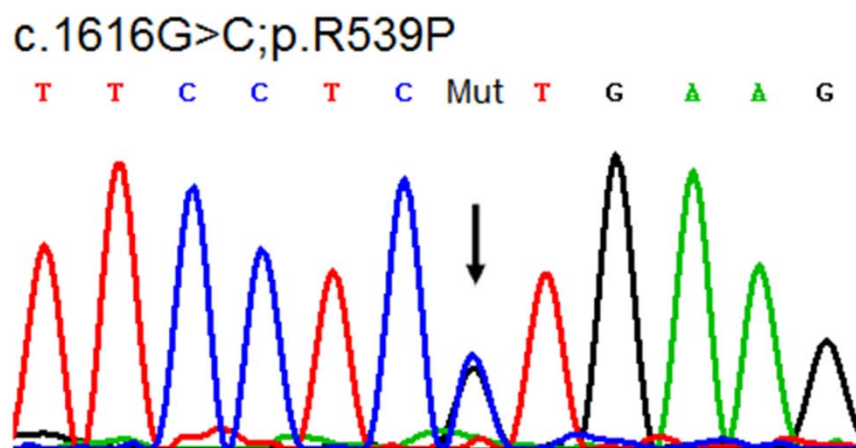


S1 Fig.

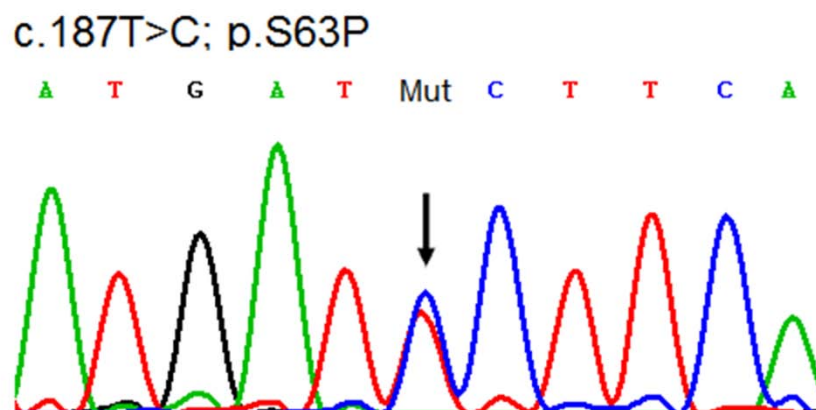
A



B



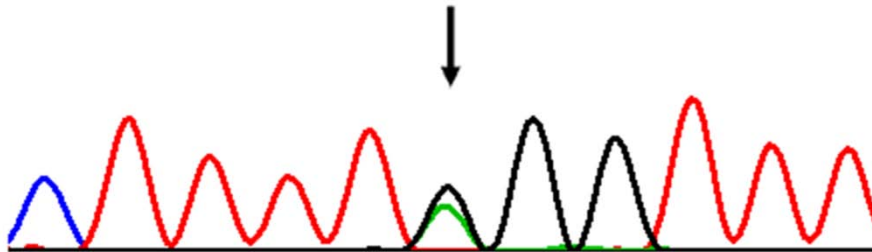
C



D

c.395-2A>G

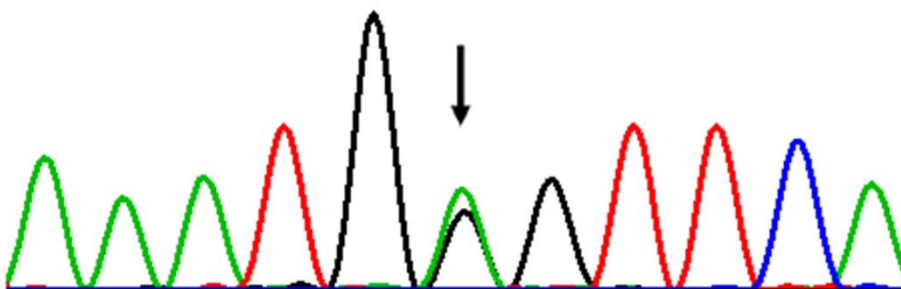
C T T T T Mut G G T T T



E

c.516G>A; p.W172X

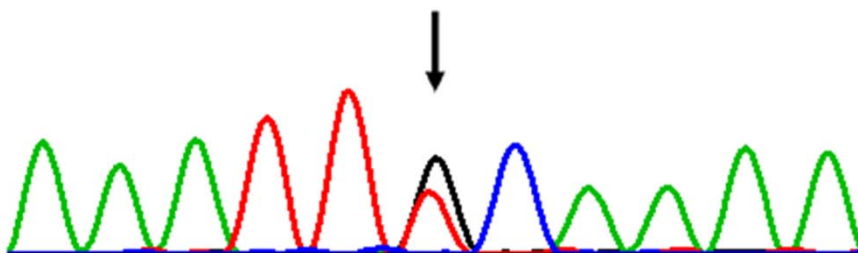
A A A T G Mut G T T C A



F

c.583G>T; p.A195S

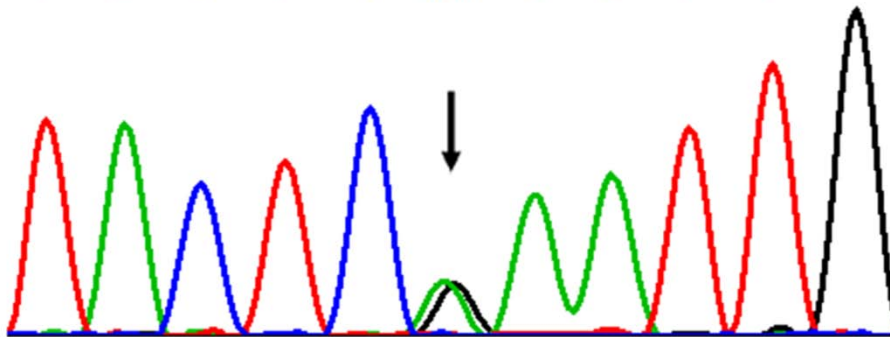
A A A T T Mut C A A A A



G

c.644G>A; p.R215Q

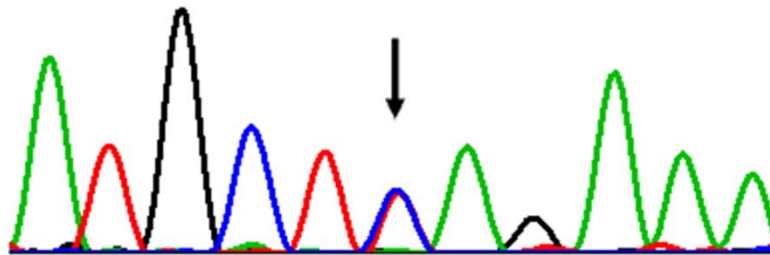
T A C T C Mut A A T T G



H

c.796C>T; p.Q266X

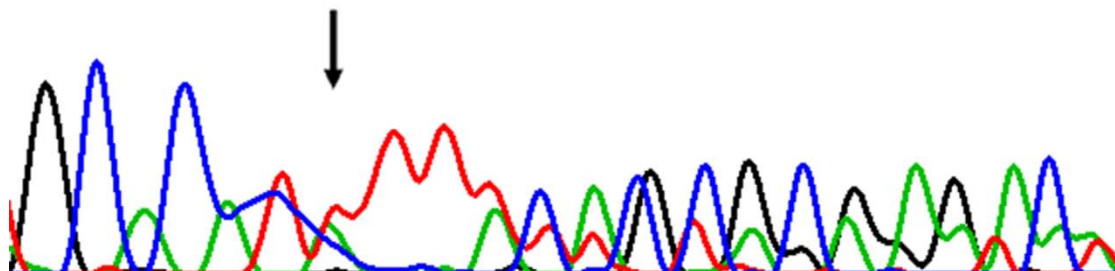
A T G C T Mut A G A A A



I

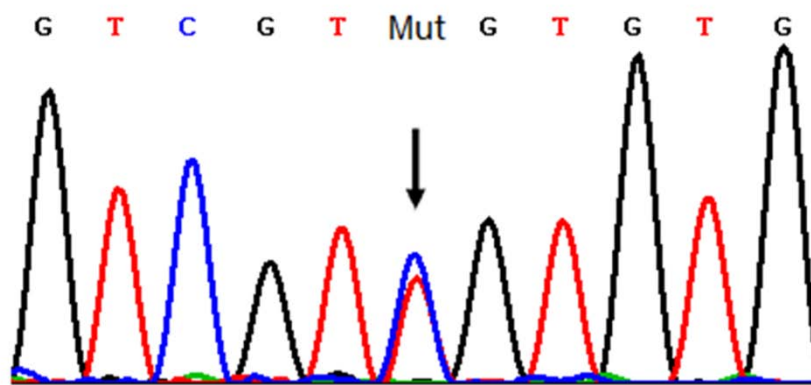
c.868-12_868-11del

G C A C A T A T T T T A C T G C A G G A A T
T T T A C T G C A G G A A T C A



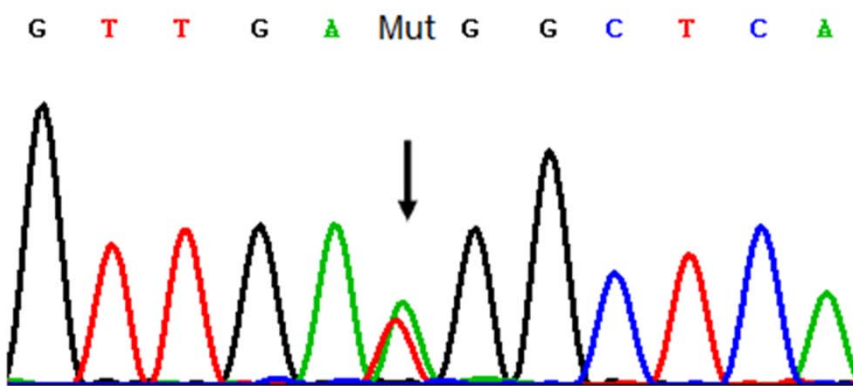
J

c.1363C>T; p.R455C



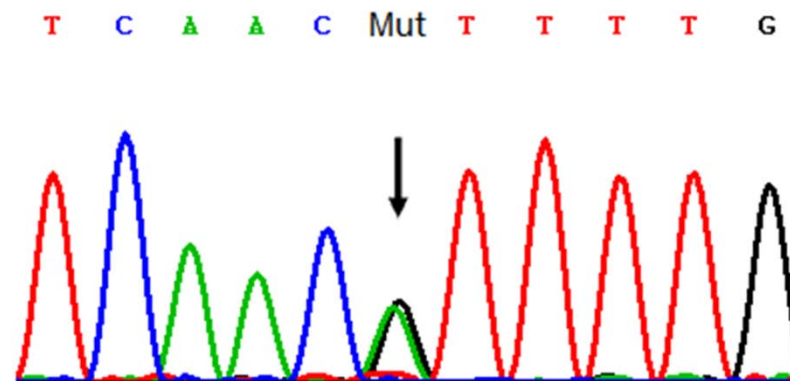
K

c.1373T>A; p.M458K



L

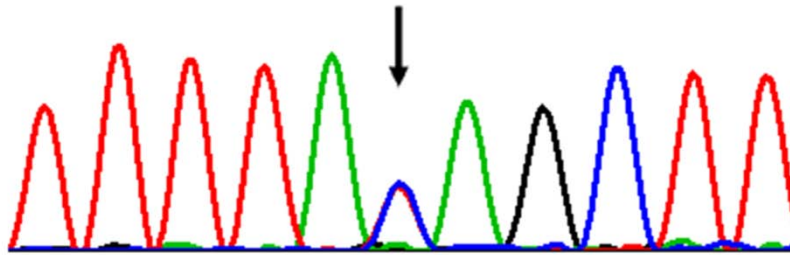
c.1382A>G;p.H461R



M

c.1685C>T; p.T562I

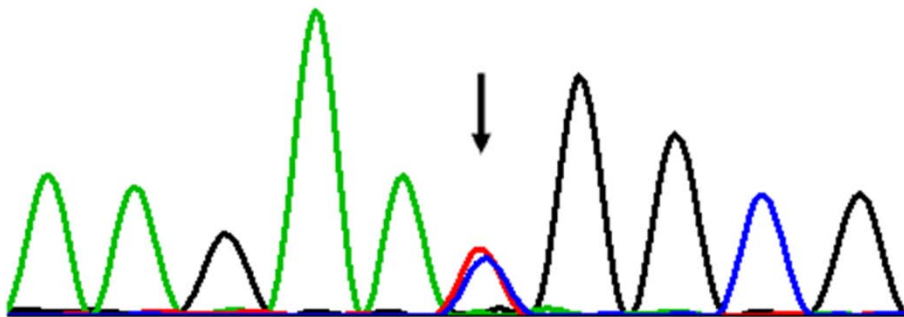
T T T T A Mut A G C T T



N

c.2T>C; p.M1T

A A G A A Mut G G C G



O

c.1088A>G; p.N363S

A G C C A Mut T G A A

