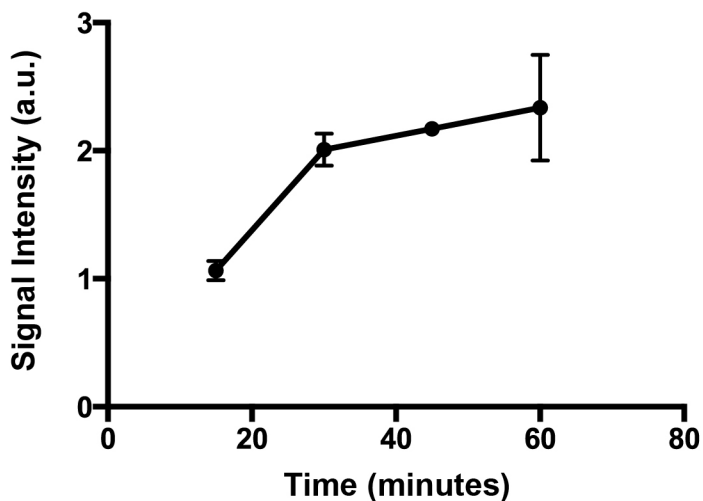


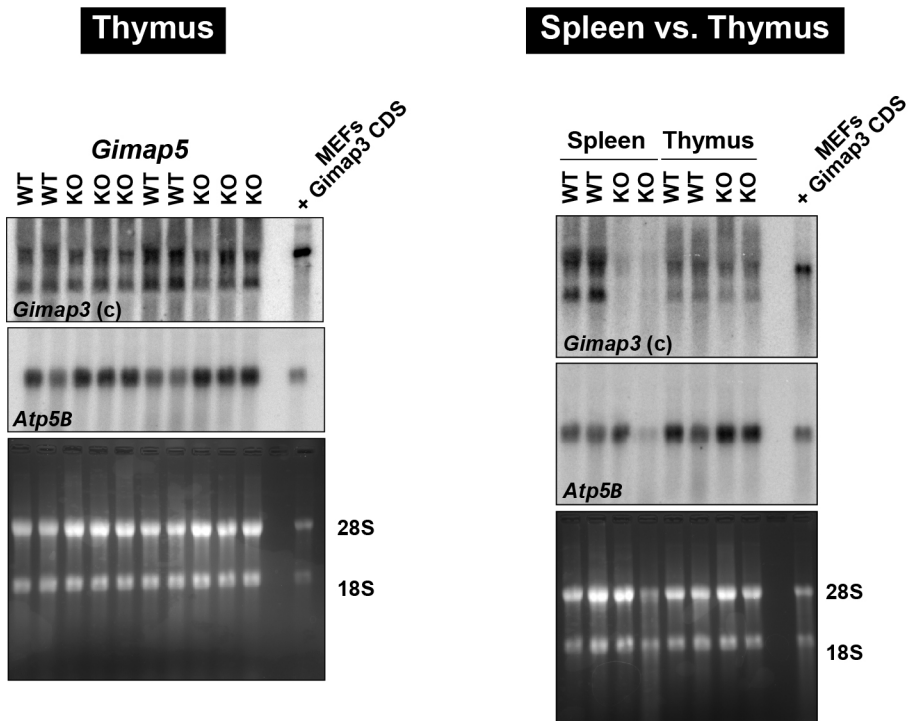
**Figure S1: Validation of Gimap3 allele-specific polyclonal antibodies.**

Upper panel, a graphical illustration of the Gimap3 protein for the BALB/c and CAST/Ei allelic variants. Black lines above the protein represent location of peptide sequences used for generating polyclonal antibodies. CC = coiled-coil; TM = transmembrane domain. Blue in the CAST/Ei protein indicates unique polypeptide sequence compared to the BALB/c allele. Lower panel, immunoblotting of whole cell lysates from retrovirally transduced mouse embryonic fibroblasts with the indicated cDNAs and antibodies.

\* non-specific signal detected in mouse embryonic fibroblasts.



**Figure S2: Quantification of  $^{35}\text{S}$ -Met, Cys *in vitro* incorporation into YFP.** YFP was produced in a coupled T7 reticulocyte lysate *in vitro* expression assay then separated by SDS-PAGE. The gel was dried, incubated with a phospho screen and signal intensity quantified following scanning with a Typhoon imaging station. Each time point represents a mean ( $\pm$  S.D.) of three independent experiments.



**Figure S3 : Northern blotting of Gimap3 in spleen and thymus of Gimap5 wildtype and knockout mice.**

15 ug of total RNA from each tissues and 5 ug for the cell line control was separated on formaldehyde gel and transferred to a charged nylon membrane followed by U.V. cross-linking. Oligonucleotide probes were end-labeled with  $^{32}\text{P}$ -ATP then hybridized overnight with the membrane.

**Files S1-S2**

Available for download as Excel files at <http://www.genetics.org/lookup/suppl/doi:10.1534/genetics.115.175596/-/DC1>

**FileS1** Complete LC-MS/MS data analysis

**FileS2** List of proteins from iTRAQ LC-MS/MS