

### A) Bin 30: Signaling

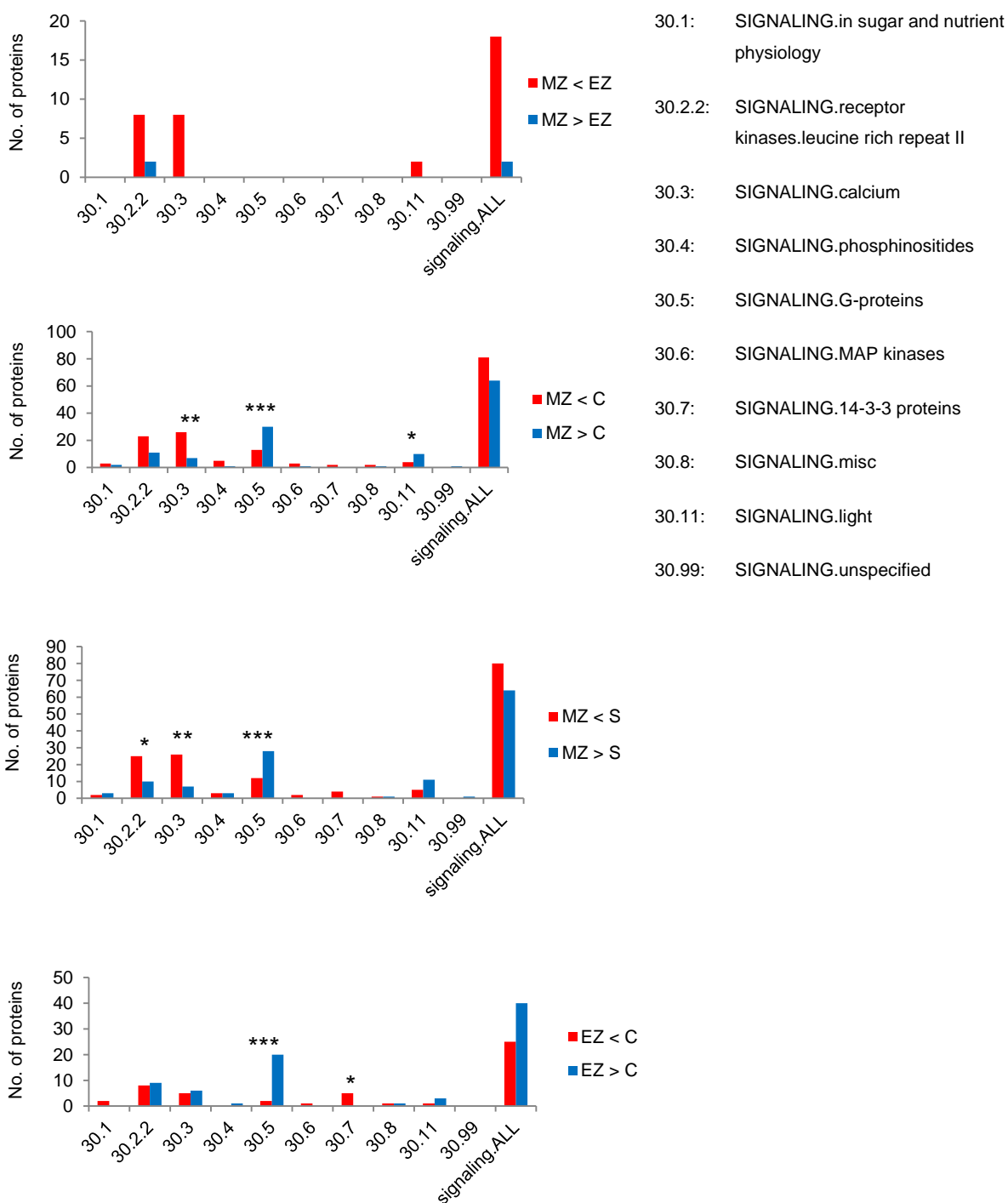
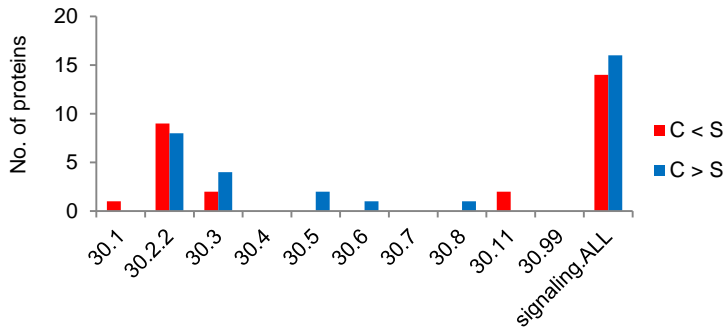
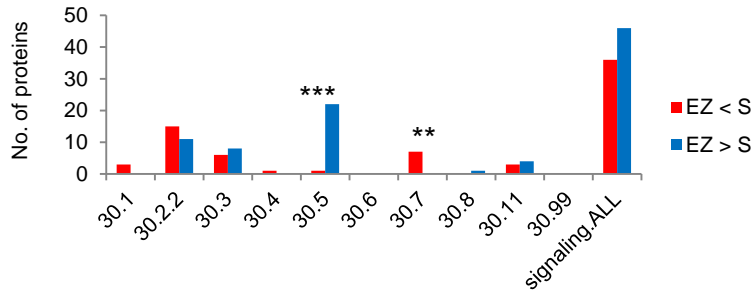
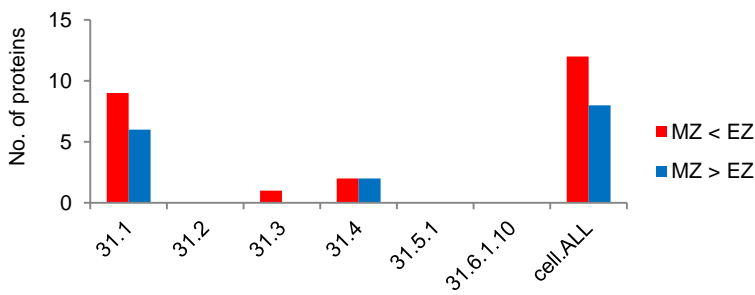


Figure S4. Distribution of differentially accumulated nonmodified proteins in six pairwise comparisons of the four primary root tissues in the Mapman bins (A) 30 "signaling" and (B) 31 "cell". Asterisks indicate significant differences of protein accumulation in distinct sub bins compared to the expected ratio of all proteins to the corresponding main bin, "signaling" or "cell" 1: \*:  $p \leq 0.05$ ; \*\*:  $p \leq 0.01$ ; \*\*\*:  $p \leq 0.001$ .



B) Bin 31: Cell



- 31.1: CELL.organization
- 31.2: CELL.division
- 31.3: CELL.cycle
- 31.4: CELL.vesicle transport
- 31.5.1: CELL.cell death.plants
- 31.6.1.10: CELL.motility. eukaryotes.flagellar associated proteins

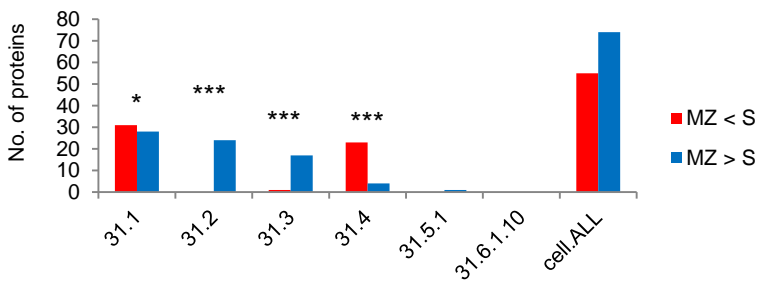
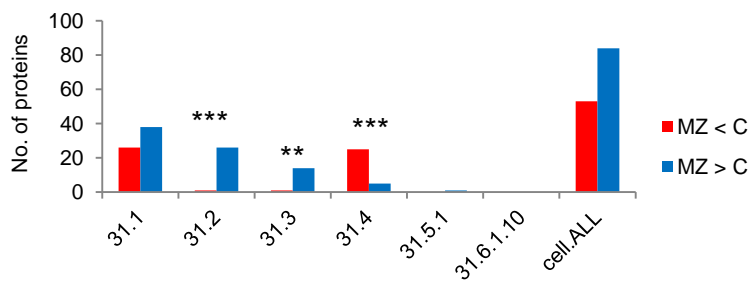


Figure S3 continued.

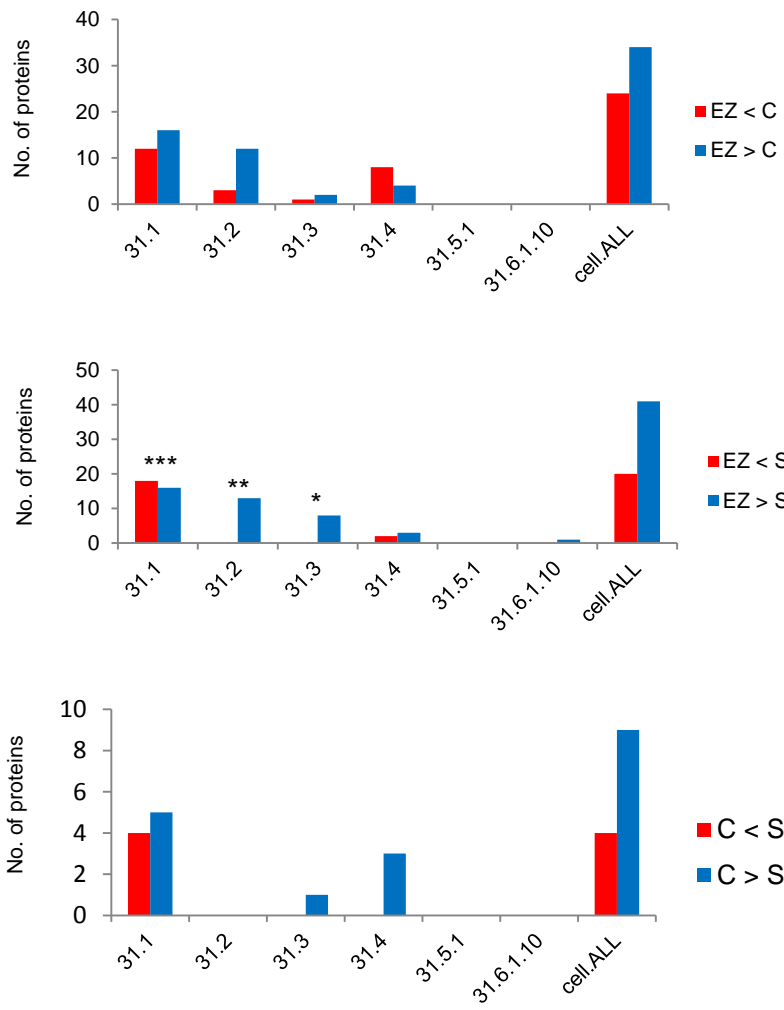


Figure S3 continued.