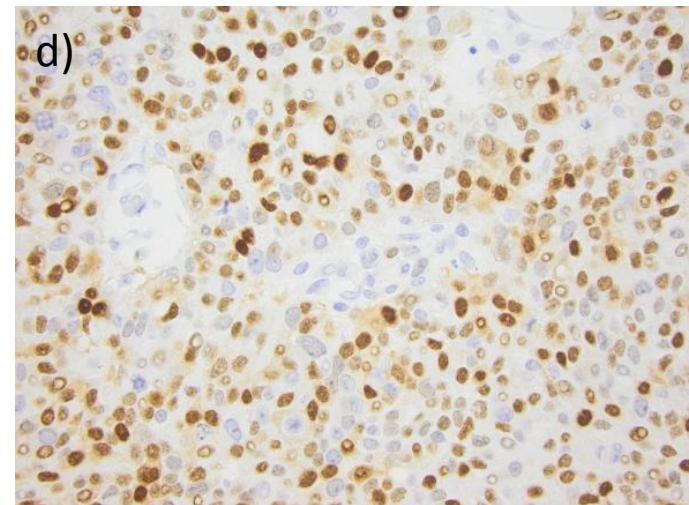
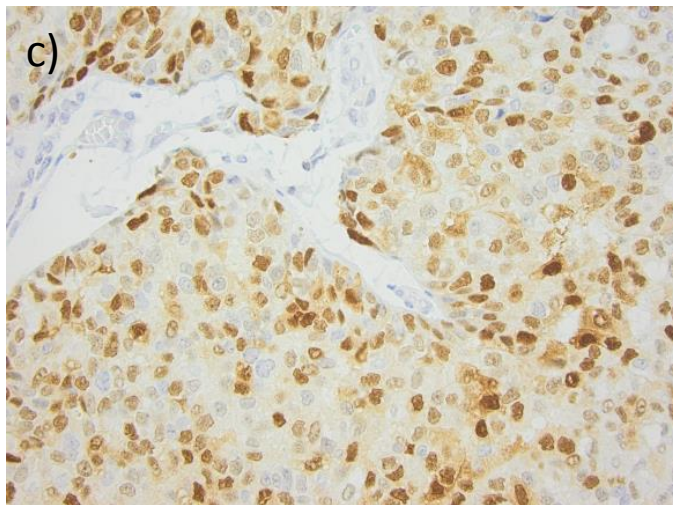
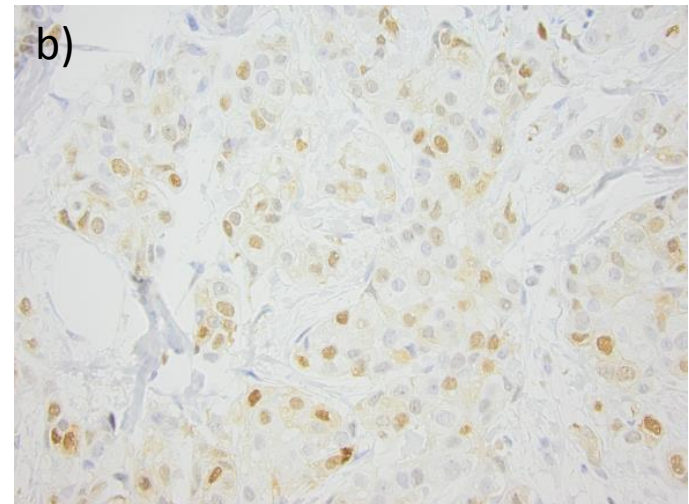
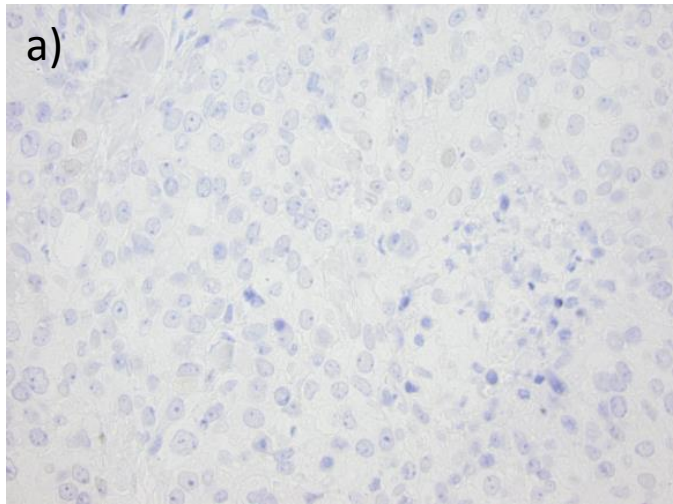


Supplementary Figure S1



Supplementary Figure 1. Examples of immunohistochemical cyclin D1 staining with negative nuclear and cytoplasmic expression (a), weak nuclear and cytoplasmic expression (b), moderate nuclear and cytoplasmic expression (c), and strong nuclear and weak cytoplasmic expression (d), respectively.