

Electronic Supplementary Material: Coye et al. 2015

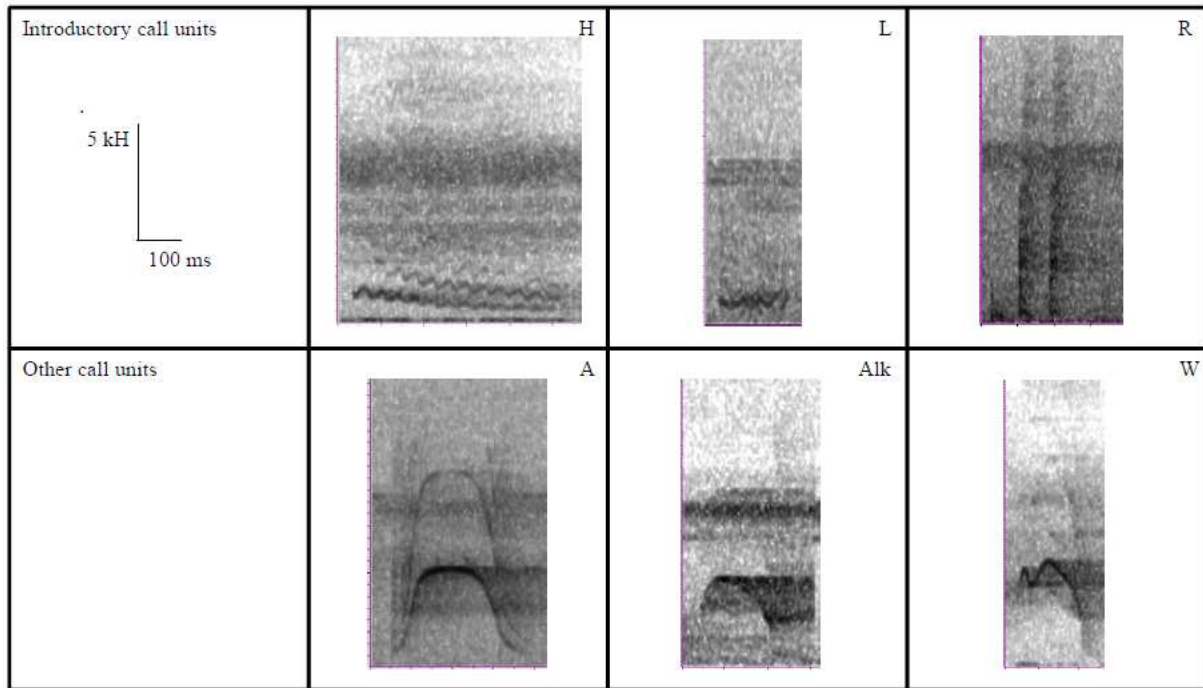


Figure 1: The six call units produced by female Diana monkeys: ‘H’ (high-pitched trilled call unit), ‘L’ (low-pitched trilled call unit), ‘R’ (repeated-unit call unit), ‘A’ (arched frequency modulated call unit), ‘Alk’ (short arched call unit) and ‘W’ (short arched, high pitched noted call unit).