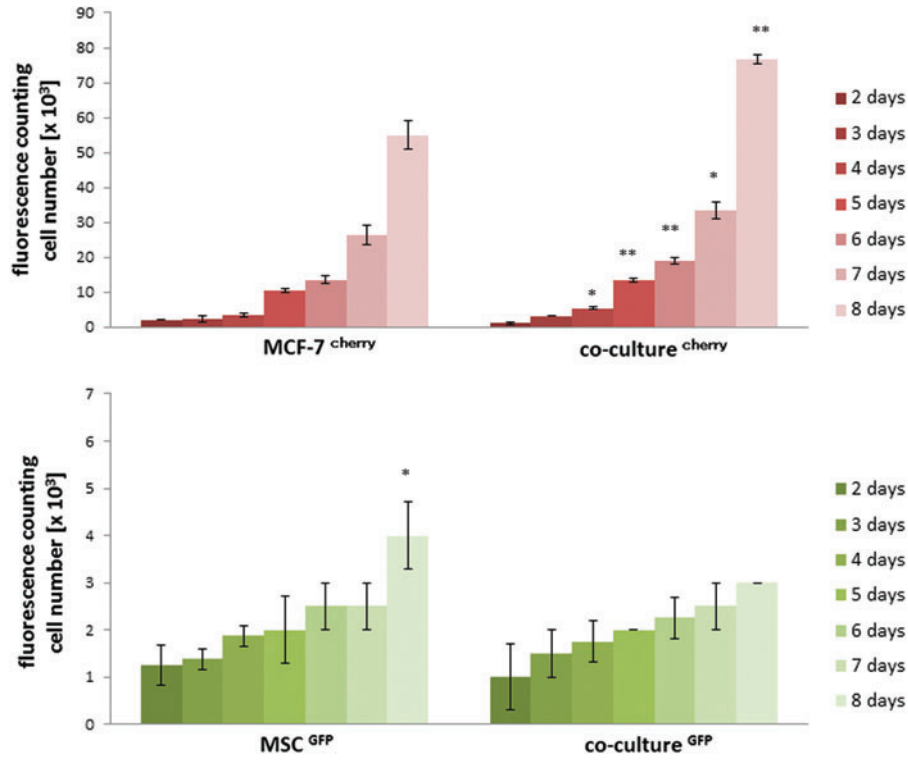


Supplementary Data



SUPPLEMENTARY FIG. S1. MSC^{GFP}, MCF-7^{cherry} cells, and a co-culture of MSC^{GFP}/MCF-7^{cherry} cells (ratio 80:20) were cultured in 24-well plates in MSC culture medium till 8 days, respectively, whereby the two different MCF-7^{cherry} (*upper panel*) and MSC^{GFP} (*lower panel*) mono-cultures contained the same amount of cells as the corresponding co-culture. At the indicated time points, all cells from each culture were trypsinized, and the total amount of cells in each culture was counted by trypan blue exclusion in a hemocytometer using the mcherry and the eGFP filter in a fluorescence microscope. The data represent the mean \pm SD of four independent experiments. A statistical analysis between the mono-culture and the corresponding population in co-culture was conducted by unpaired Student's *t*-test (* $P < 0.05$; ** $P < 0.01$). MSC, mesenchymal stroma/stem cells.