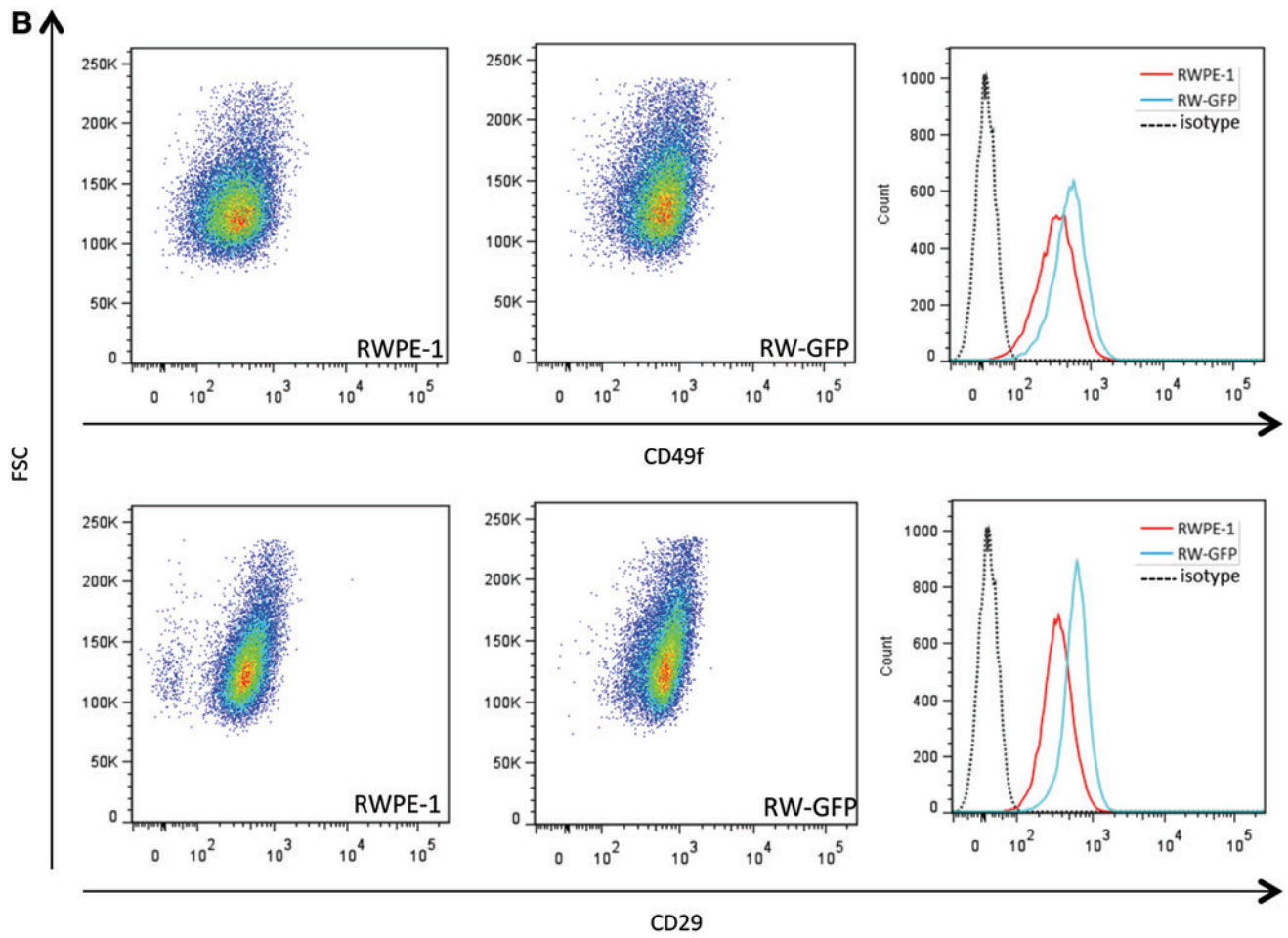


SUPPLEMENTARY FIG. S3. Flow cytometry analysis of stem cell marker expression. Representative dot plots of parental RWPE-1 and RW-GFP cells labeled with each antibody. (A) CD44, CD166, TROP2, and (B) integrin $\alpha 6$ (CD49f) and integrin $\beta 1$ (CD29); setting was done using unstained or isotype-labeled cells, which gave similar results. FSC, forward side scatter.



SUPPLEMENTARY FIG. S3. (Continued).