

A

Methylation
Status:

Sequence:

1. Fully

5' GCTCACCCGCGCCCA**T**GGTGGGAGCCGGAGACG-FAM 3'
 3' CGAGTGGGCGCGGG**T**ACCACCCTCGGCCTCTGC 5'

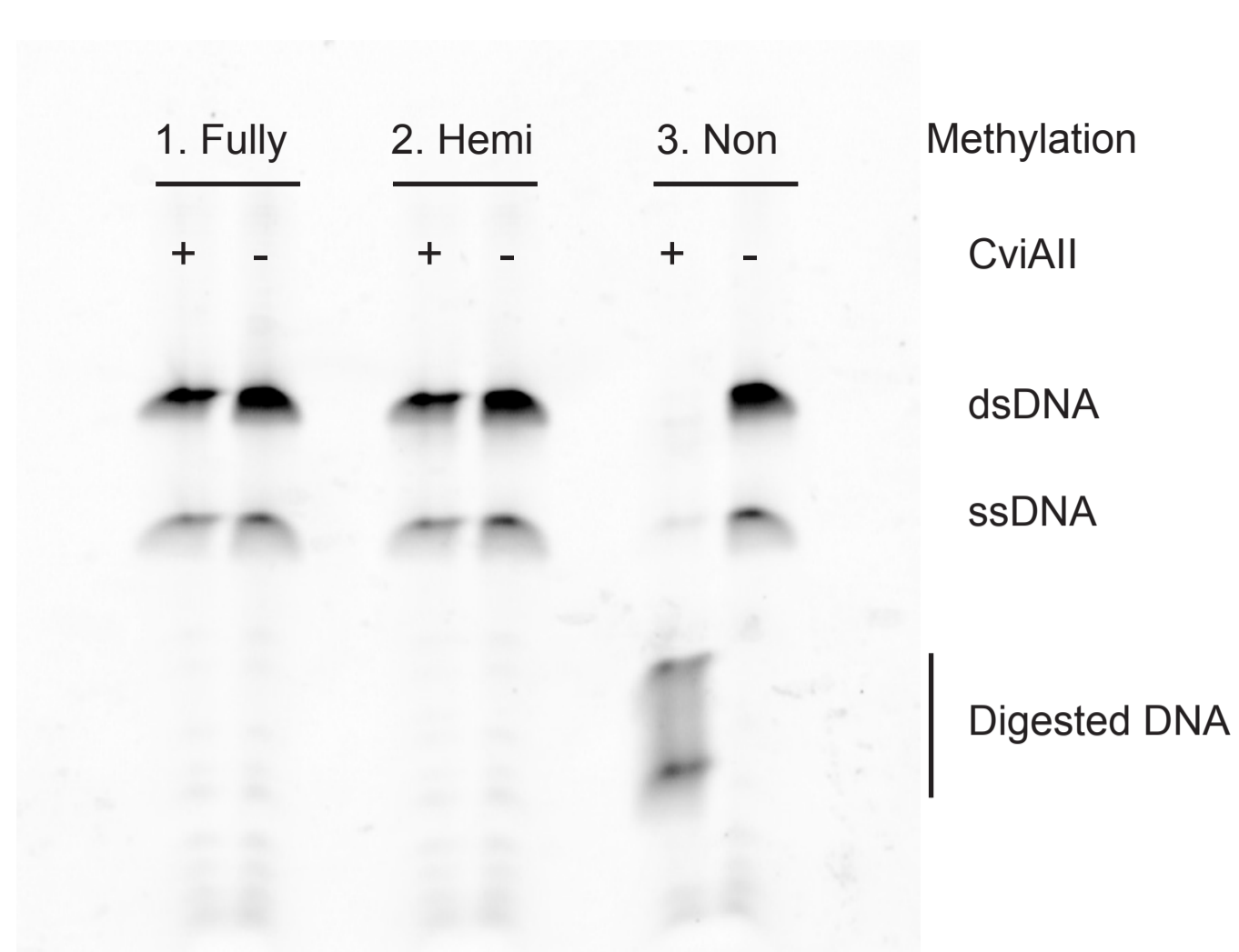
2. Hemi

5' GCTCACCCGCGCCCA**T**GGTGGGAGCCGGAGACG-FAM 3'
 3' CGAGTGGGCGCGGG**T**ACCACCCTCGGCCTCTGC 5'

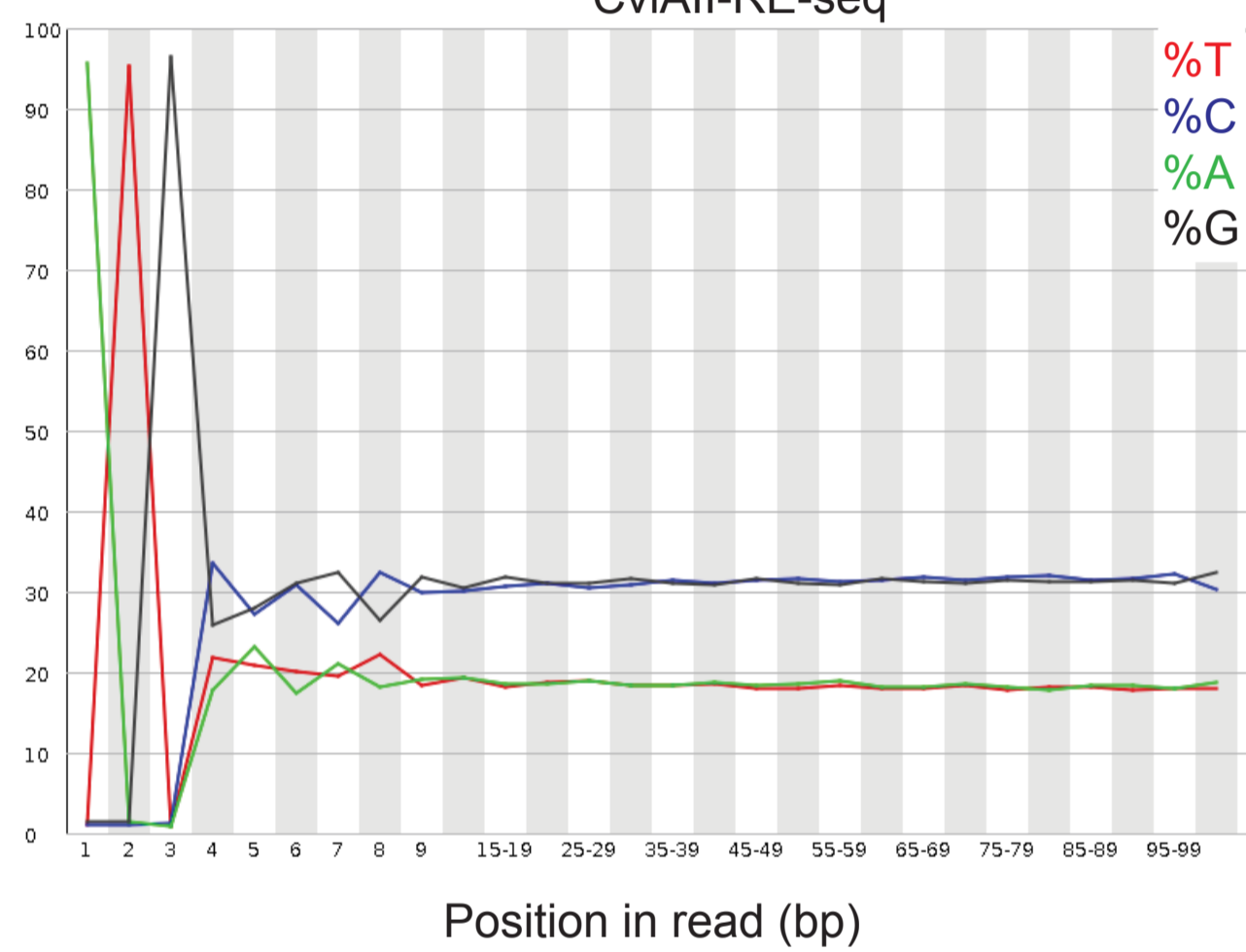
3. Non

5' GCTCACCCGCGCCCA**T**GGTGGGAGCCGGAGACG-FAM 3'
 3' CGAGTGGGCGCGGG**T**ACCACCCTCGGCCTCTGC 5'

A = 6mA



B

Sequence content across all bases
CviAI-RE-seq

C

Sequence content across all bases
DpnII-RE-seq