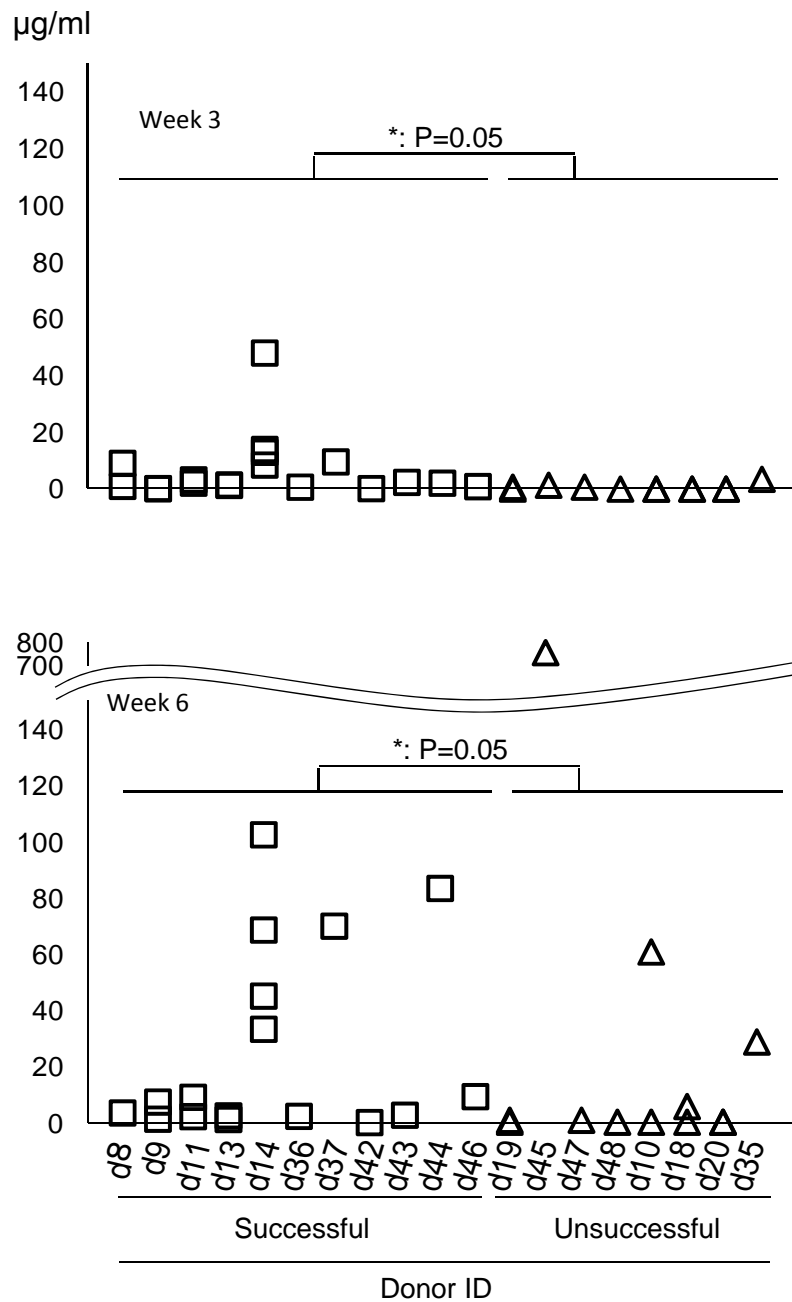


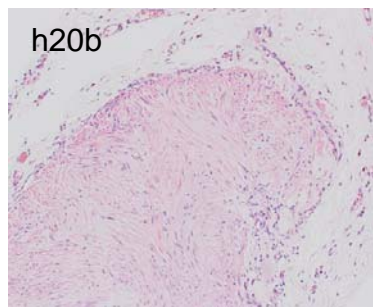
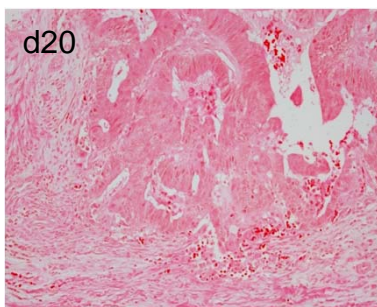
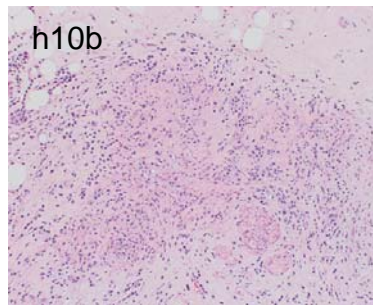
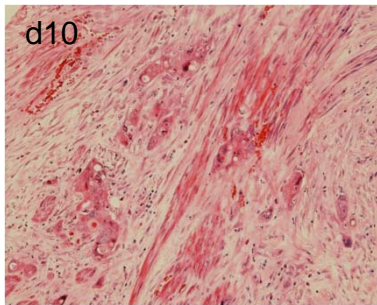
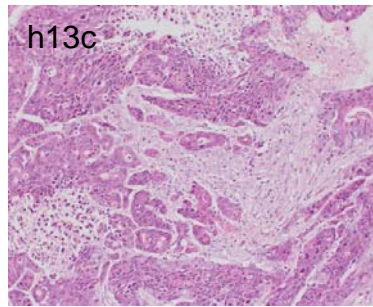
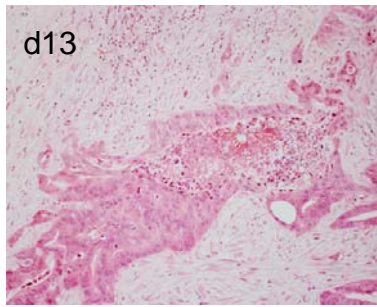
Supplementary Figure 1. Time course observation of IgM concentration in the host serum. Each line represents 1 host.



Supplementary Figure 2. IgM concentration in the host serum compared between unsuccessful-engraftment and successful-engraftment cases at Weeks 3 and 6 after transplantation of human tumor tissues. Each column represents one donor, and each symbol one host. There was a statistically significant difference (Wilcoxon signed-rank test) at both time points, with higher levels for successful cases.

Original patient tissue

Transplanted tissue



Supplementary Figure 3. Comparison between original patient tissue and transplanted tissue.