

Figure S1. Post-LAS Conditional Survival by Recipient Diagnosis and Age
Kaplan-Meier survival curves conditioned on survival to one year post transplantation for the post-LAS cohort. Panel A – survival by recipient diagnosis: group A (obstructive) (red line); group B (pulmonary vascular) (blue line); group C (cystic fibrosis or immunodeficiency) (green line) ; group D (restrictive). Panel B – survival by age ≥ 50 years (blue line) and < 50 years (red line).

Figure S1.

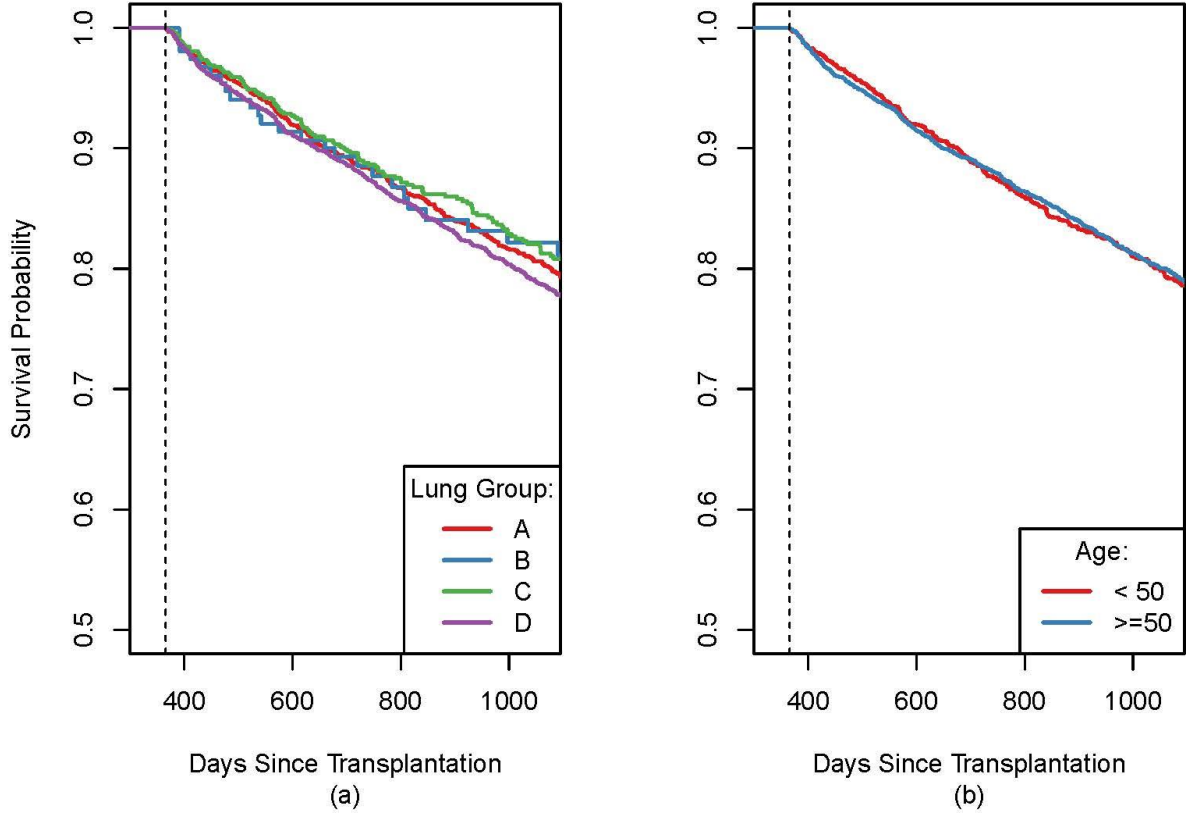


Table S1. Weekly mortality rates per 10,000 patients around the one-year threshold by temporal cohort

Week	Historic Control 1995 – 2000	Pre-LAS Cohort 2001 – 4/2005	Post- LAS Cohort 5/2005 – 11/2011
40	2.95	5.18	3.10
41	1.84	3.34	3.53
42	2.59	1.86	3.33
43	4.45	4.10	4.60
44	4.09	4.48	2.31
45	3.73	2.25	5.48
46	3.74	5.26	1.48
47	4.87	4.53	4.27
48	2.25	2.65	3.23
49	3.77	2.65	3.70
50	6.43	1.90	2.64
51	1.14	3.43	5.14
52	3.04	3.82	2.53
53	3.05	4.99	4.09
54	2.29	1.92	2.48
55	3.44	3.08	5.82
56	3.45	2.32	6.73
57	4.62	4.26	5.26
58	5.41	3.49	4.51
59	3.87	5.07	4.55
60	3.50	3.52	4.58
61	3.12	4.31	5.70
62	2.73	4.32	4.37
63	2.74	3.55	3.57
64	6.29	2.76	4.69
65	3.15	4.75	2.50
66	2.77	5.97	1.11
67	5.95	2.39	5.04
68	3.58	4.00	3.09
69	3.59	3.61	2.82
70	4.00	4.02	3.11
71	2.81	1.21	2.84
72	3.61	2.82	2.84

Table S2: Monthly hazard ratios for death after one-year relative to 90 days prior to one year by temporal cohort with interaction terms between cohort and time period

Months Post One Year	Historical Cohort	Pre-LAS Cohort	Post-LAS Cohort	Interaction Historical vs. Post-LAS	Interaction Pre-LAS vs. Post-LAS
1	0.95 (0.66, 1.38)	0.89 (0.61, 1.31)	1.44 (1.12, 1.85)	1.51 (0.97, 2.36)	1.61 (1.02, 2.55)
2	1.25 (0.90, 1.75)	1.28 (0.91, 1.78)	1.44 (1.12, 1.87)	1.15 (0.76, 1.76)	1.13 (0.74, 1.73)
3	1.11 (0.78, 1.58)	1.24 (0.88, 1.74)	1.19 (0.90, 1.58)	1.07 (0.69, 1.68)	0.96 (0.62, 1.50)
4	1.20 (0.85, 1.70)	1.25 (0.89, 1.76)	0.95 (0.70, 1.30)	0.79 (0.50, 1.25)	0.76 (0.48, 1.20)
5	1.03 (0.71, 1.48)	0.72 (0.47, 1.09)	0.85 (0.62, 1.18)	0.83 (0.51, 1.35)	1.19 (0.70, 2.03)
6	0.88 (0.59, 1.29)	0.92 (0.62, 1.35)	0.94 (0.69, 1.28)	1.07 (0.65, 1.77)	1.03 (0.62, 1.68)

Hazard ratio (95% CI)

Bold statistical significance at $p < 0.05$

Table S3: Monthly hazard ratios for death or re-transplant relative to 90 days prior to one year by temporal cohort

Months Post One Year	Historical Cohort	Pre-LAS Cohort	Post-LAS Cohort
1	0.92 (0.65, 1.32)	0.82 (0.56, 1.19)	1.36 (1.06, 1.79)
2	1.10 (0.79, 1.54)	1.15 (0.82, 1.60)	1.37 (1.05, 1.79)
3	1.02 (0.72, 1.44)	1.14 (0.81, 1.59)	1.14 (0.85, 1.52)
4	1.13 (0.81, 1.58)	1.13 (0.80, 1.58)	0.89 (0.62, 1.23)
5	0.95 (0.66, 1.36)	0.66 (0.43, 1.00)	0.87 (0.63, 1.20)
6	0.81 (0.55, 1.19)	0.85 (0.58, 1.24)	0.995 (0.70, 1.30)

Hazard ratio (95% CI)

Bold statistical significance at $p < 0.05$

Table S4: Monthly hazard ratios for death relative to 90 days prior to one year using different temporal cohort

Months Post One Year	1995 – 2000	2001 – 2003	2004 – 2007	2008 – 2011
1	0.93 (0.65, 1.35)	0.92 (0.59, 1.44)	1.29 (0.93, 1.79)	1.43 (0.96, 2.06)
2	1.13 (0.81, 1.58)	1.27 (0.85, 1.89)	1.39 (1.01, 1.92)	1.40 (0.95, 2.07)
3	1.04 (0.74, 1.48)	1.21 (0.81, 1.82)	0.99 (0.69, 1.43)	1.59 (1.08, 2.31)
4	1.16 (0.83, 1.62)	1.08 (0.70, 1.65)	1.00 (0.69, 1.44)	1.14 (0.74, 1.77)
5	0.97 (0.67, 1.39)	0.70 (0.42, 1.16)	0.90 (0.62, 1.32)	0.85 (0.52, 1.39)
6	0.82 (0.56, 1.21)	0.86 (0.54, 1.38)	1.02 (0.71, 1.47)	1.00 (0.63, 1.59)

Hazard ratio (95% CI)

Bold statistical significance at $p < 0.05$

Table S5: Monthly hazard ratios for death relative to 90 days by candidate diagnosis

Months Post One Year	Candidate Diagnostic Group			
	A (n = 2493)	B (n = 229)	C (n = 935)	D (n = 3778)
1	1.74 (1.10, 2.75)	5.05 (0.84, 30.22)	1.02 (0.48, 2.16)	1.34 (0.92, 1.94)
2	1.43 (0.87, 2.35)	1.86 (0.17, 20.47)	0.84 (0.37, 1.92)	1.62 (1.14, 2.31)
3	1.40 (0.84, 2.32)	3.93 (0.55, 27.97)	1.12 (0.53, 2.37)	1.07 (0.71, 1.62)
4	0.88 (0.48, 1.62)	6.04 (1.01, 36.23)	0.77 (0.32, 1.85)	0.94 (0.61, 1.46)
5	0.89 (0.49, 1.63)	NA**	0.90 (0.40, 2.07)	0.95 (0.61, 1.48)
6	1.39 (0.83, 2.32)	6.18 (1.03, 37.06)	0.66 (0.25, 1.70)	0.81 (0.51, 1.30)

Diagnosis groups are: A = Obstructive lung disease, B = Pulmonary vascular disease, C = Cystic fibrosis or immunodeficiency disorder, and D = Restrictive lung disease

Hazard ratio (95% CI)

Bold statistical significance at $p < 0.05$