

Supplementary Fig. S1

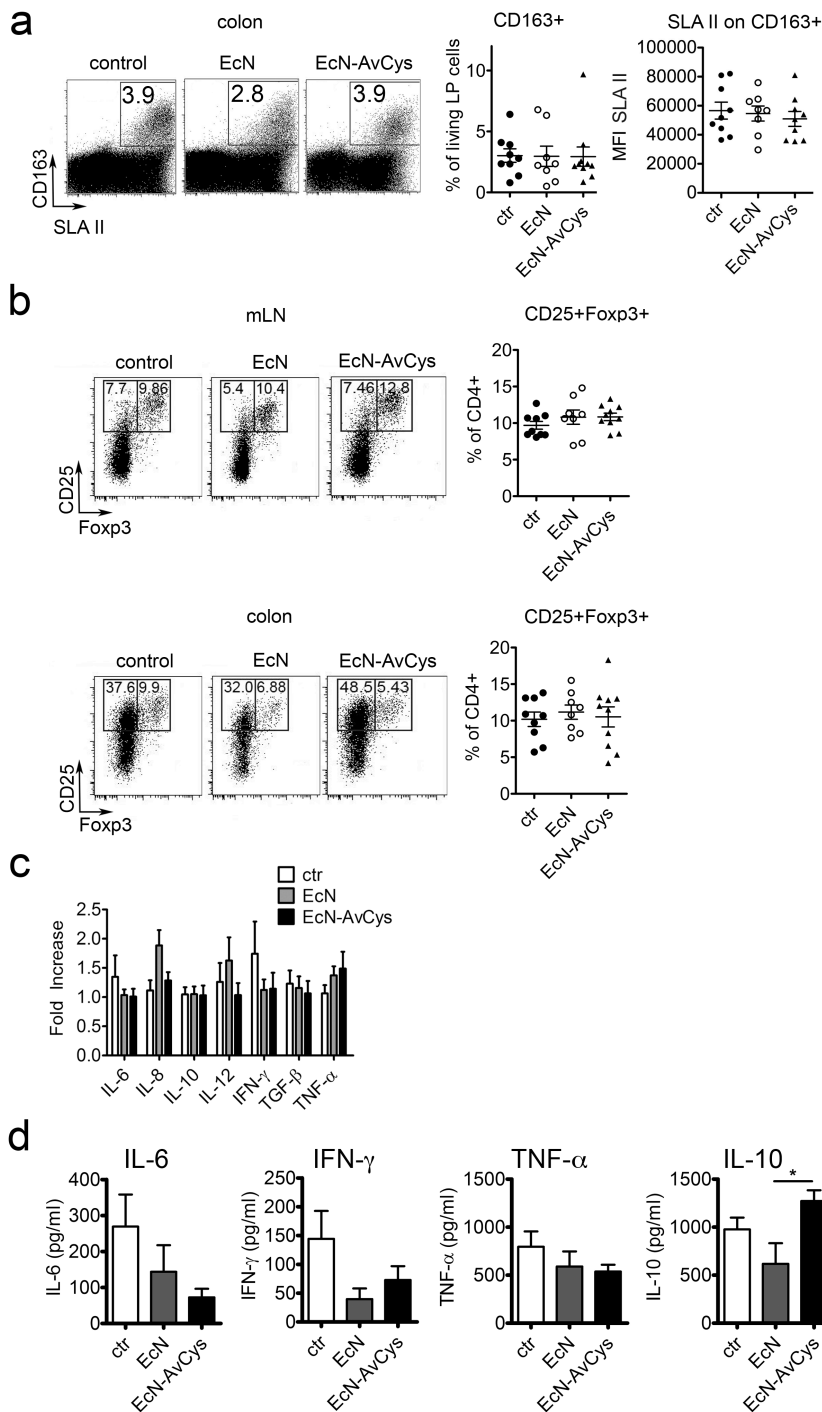


Figure S1. Immune parameters in response to EcN-AvCys in swine feeding trial. (a) Frequency of CD163⁺SLAII⁺ macrophages in live colon lamina propria lymphocytes (left and center) and mean fluorescence intensity (MFI) of macrophages stained for SLAII (right) as determined by flow cytometry. Individual animals and group mean + SEM is shown. (b) Representative plots from flow cytometrical analysis of regulatory T cells in mLN (upper row) and colon lamina propria leukocytes (LPL, lower row) based on detection of CD4, CD25 and FoxP3. Cells in upper right gate were considered as CD25⁺Foxp3⁺ Tregs. Frequencies of CD4⁺CD25⁺FoxP3⁺ T regulatory cells are shown as a percentage of total CD4⁺ lymphocytes for all pigs. Individual animals and group mean + SEM is shown. (c) Distal colon mRNA expression of cytokines normalized to RPL19 and expressed as fold increase above average control. (d) IL-6, IFN- γ , TNF- α and IL-10 protein levels detected by ELISA in supernatants of colon lamina propria cells stimulated with PHA for 48h. Mean + SEM is shown. * p < 0.05 (Mann-Whitney U test).