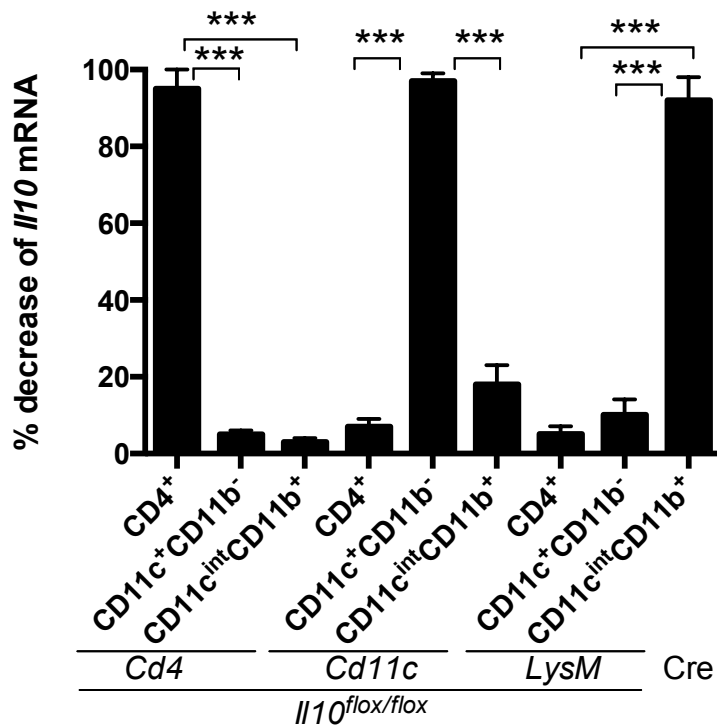
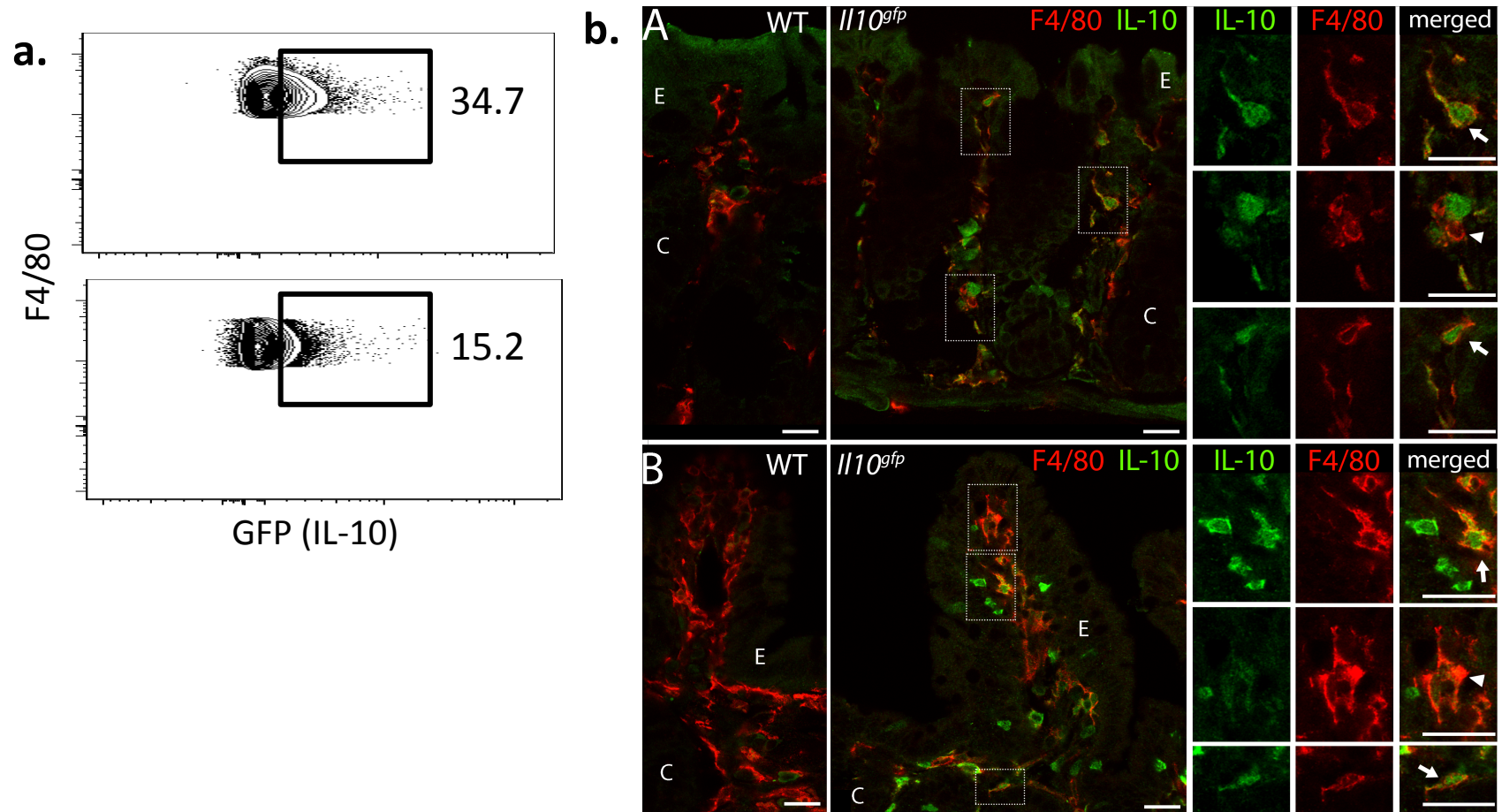


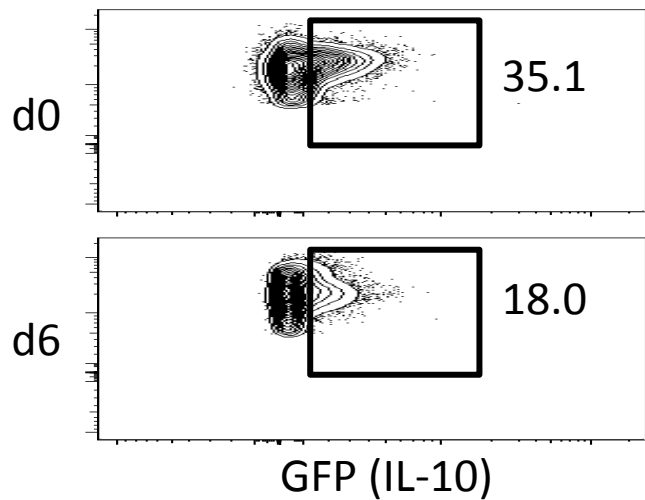
Supplementary Fig. 1. IL-10 is essential for prevention from colonic tissue damage after *Citrobacter rodentium* infection. (top) *Il10*^{-/-} and *Il10rb*^{-/-} mice had no sign of colonic inflammation under steady state conditions. (bottom) *Il10*^{-/-} and *Il10rb*^{-/-} mice showed severe colonic inflammation at day 6 after *C. rodentium* infection. Scale bar=50μm.



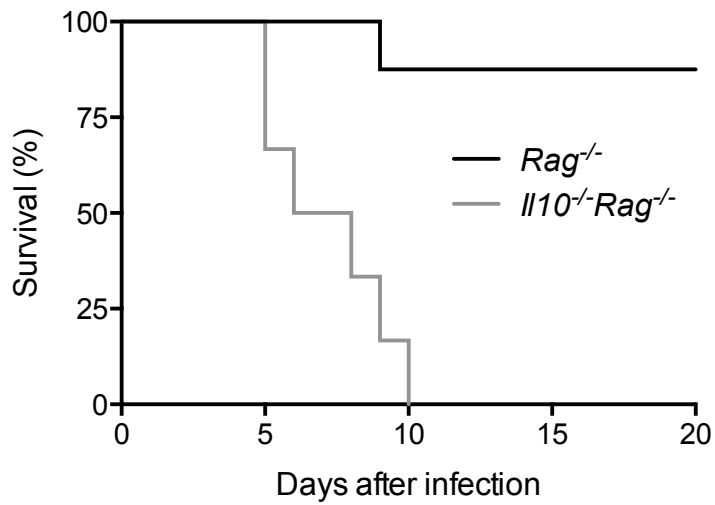
Supplementary Fig. 2. % decrease of *I10* mRNA transcripts. CD4⁺, CD11c⁺CD11b⁻ and CD11c^{int}CD11b⁺ populations in the large intestine were sorted from *I10*^{flox/flox}Cd4-Cre, *I10*^{flox/flox}Cd11c-Cre and *I10*^{flox/flox}LysM-Cre mice. *I10* mRNA relative quantities were determined by RT-PCR. Those values were compared to the amount of *I10* mRNA in *I10*^{flox/flox} mice. Data are from 2 independent experiments with 3-4 mice per group. *** p<.001.



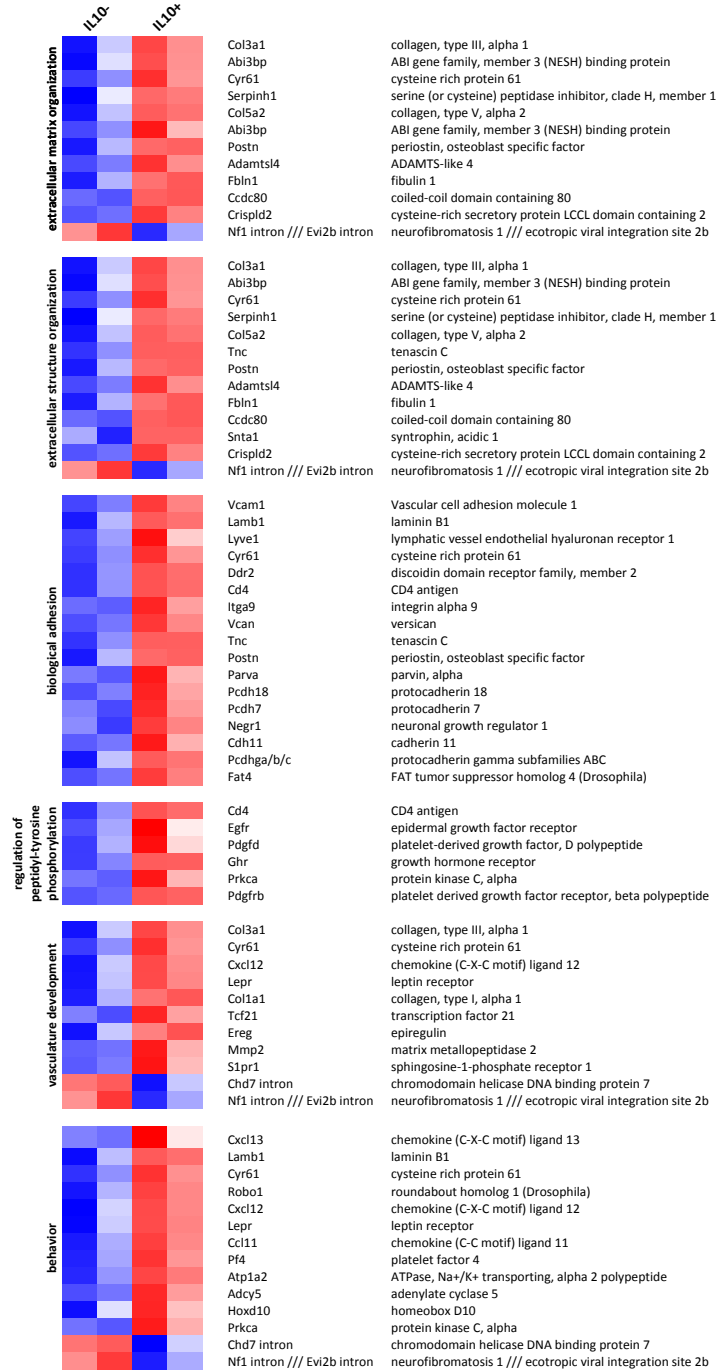
Supplementary Fig. 3. Large intestinal macrophages express GFP (IL-10). (a) Large intestinal macrophages express GFP (IL-10) more than small intestinal macrophages in *Il10^{gfp}* mice. Cells gated on MHC class II⁺ CD45⁺ CD11b⁺ CD11c^{int} F4/80⁺ are shown. Top panel indicates large intestine and bottom panel indicates small intestine. (b) Confocal immunofluorescence demonstrating presence of F4/80⁺IL-10⁺ (arrows) and F4/80⁺IL-10⁻ (arrowheads) macrophages along with F4/80⁻IL10⁺ cells in the lamina propria of (A) large and (B) small intestine. E – epithelium, C- crypts. Bar = 20 μ m



Supplementary Fig. 4. Colonic macrophages constitutively produce GFP (IL-10). Cells gated on MHC class II⁺ CD45⁺ CD11b⁺ CD11c^{int} F4/80⁺ cells from *Il10^{gfp}* mice were analyzed before infection (d0) and at day 6 *after C. rodentium* (d6) .



Supplementary Fig. 5. IL-10 is indispensable for regulating innate mucosal immune responses and survival after *C. rodentium* infection. *Rag*^{-/-} (black line), *Il10*^{-/-}*Rag*^{-/-} (gray line) mice were infected orally with *C. rodentium* and survival was monitored. Two independent experiments with 6 mice per group .



Supplementary Fig. 6. Heatmaps showing the relative expression levels of significantly differentially expressed genes among the enriched GO biological process categories as identified by DAVID.