

4 kb SS RNA species

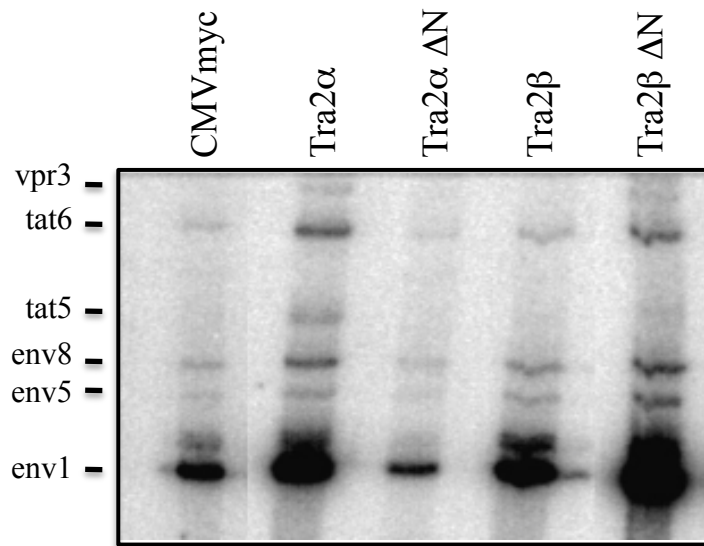
vif	ex1-ex4(SA1)
vpr3	ex1-ex4(SA2)
vpr4	ex1-ex2-ex4(SA2)
tat5	ex1-ex4(SA3)
tat6	ex1-ex2-ex4(SA3)
tat7	ex1-ex3-ex4(SA3)
tat8	ex1-ex2-ex3-ex4(SA3)
env1	ex1-ex4(SA5)
env2	ex1-ex4(SA4b)
env3	ex1-ex4(SA4a)
env4	ex1-ex4(SA4c)
env5	ex1-ex2-ex4(SA5)
env6	ex1-ex2-ex4(SA4b)
env7	ex1-ex2-ex4(SA4a)
env8	ex1-ex3-ex4(SA5)
env9	ex1-ex2-ex4(SA4c)

1.8 kb MS RNA species

tat1	ex1-ex4(SA3)-ex5
tat2	ex1-ex2-ex4(SA3)-ex5
tat3	ex1-ex3-ex4(SA3)-ex5
tat4	ex1-ex2-ex3-ex4(SA3)-ex5
rev1	ex1-ex4(SA4b)-ex5
rev2	ex1-ex4(SA4a)-ex5
rev3	ex1-ex4(SA4c)-ex5
rev4	ex1-ex2-ex4(SA4b)-ex5
rev5	ex1-ex2-ex4(SA4a)-ex5
rev6	ex1-ex2-ex4(SA4c)-ex5
rev7	ex1-ex3-ex4(SA4b)-ex5
rev8	ex1-ex3-ex4(SA4a)-ex5
rev9	ex1-ex3-ex4(SA4c)-ex5
nef1	ex1-ex5
nef2	ex1-ex4(SA5)-ex5
nef3	ex1-ex2-ex4(SA5)-ex5
nef4	ex1-ex3-ex4(SA5)-ex5
nef5	ex1-ex2-ex3-ex4(SA5)-ex5
vpr1	ex1-ex4(SA2)-ex5
vpr2	ex1-ex2-ex4(SA2)-ex5

Figure A

A



B

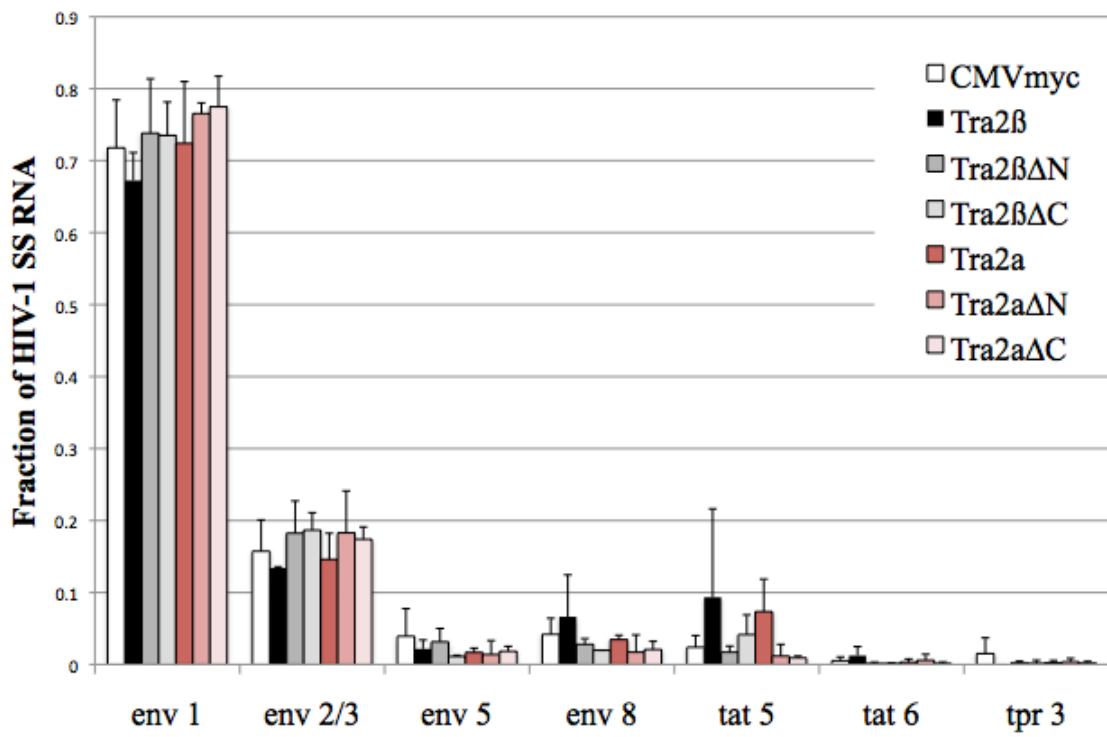


Figure B

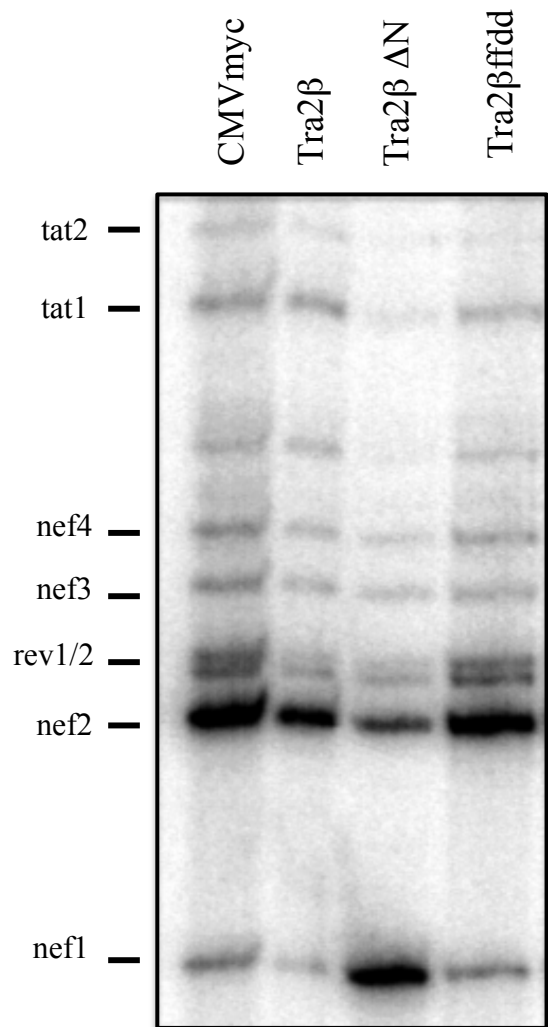


Figure C

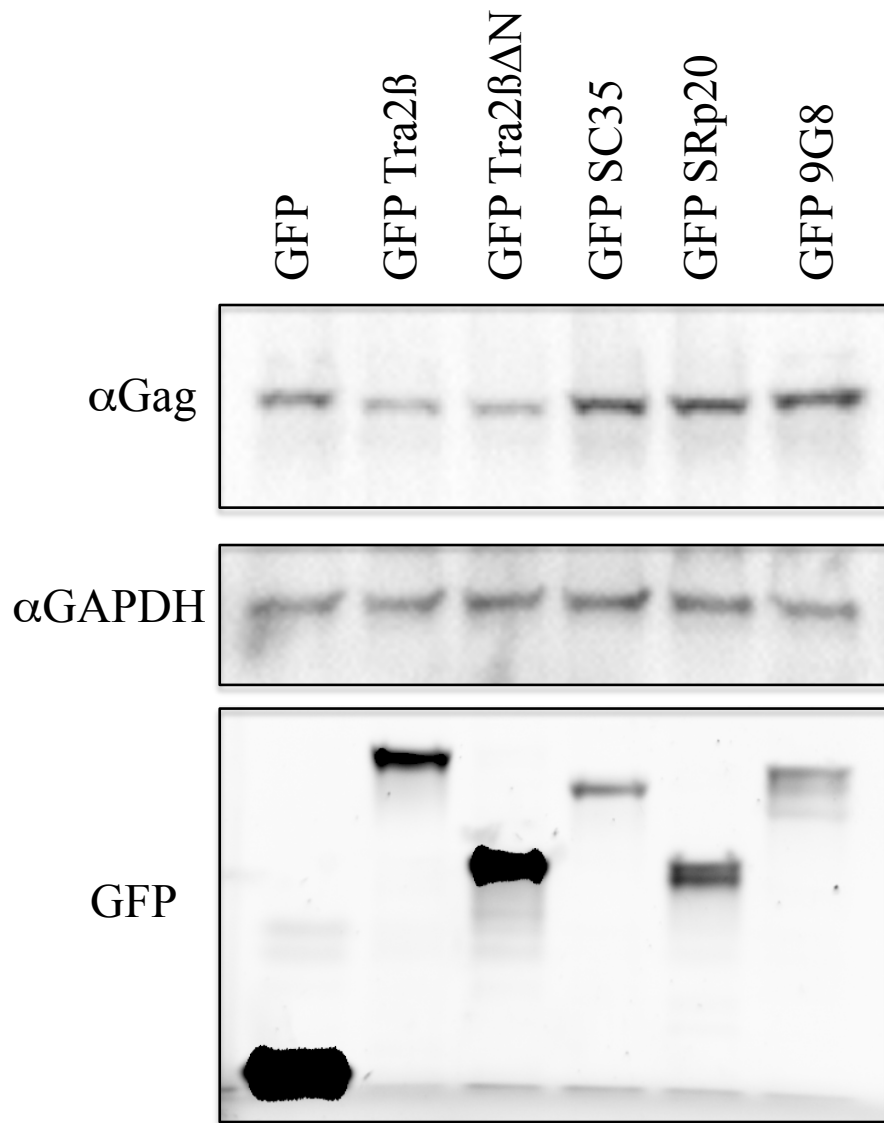
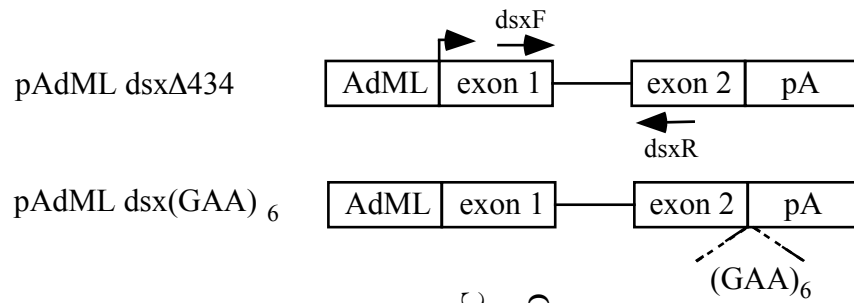


Figure D

A



B

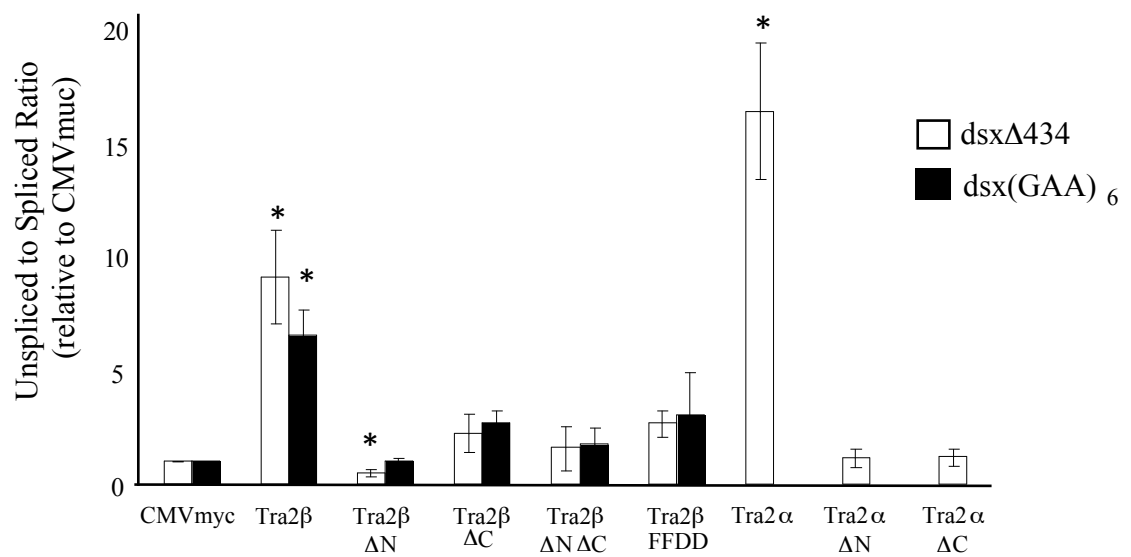
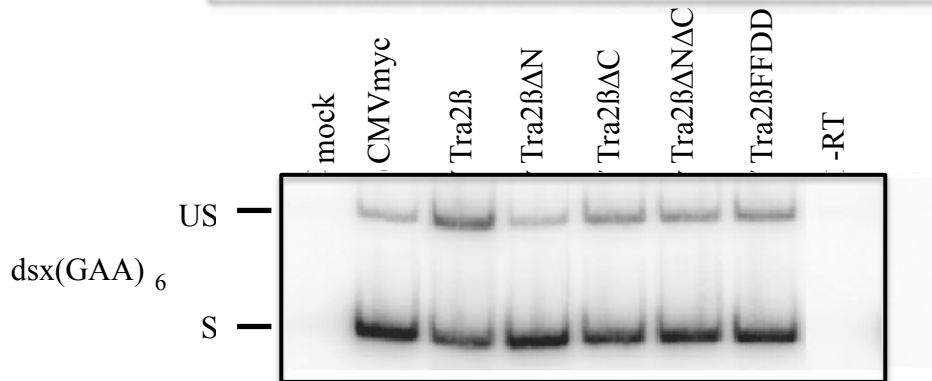


Figure E

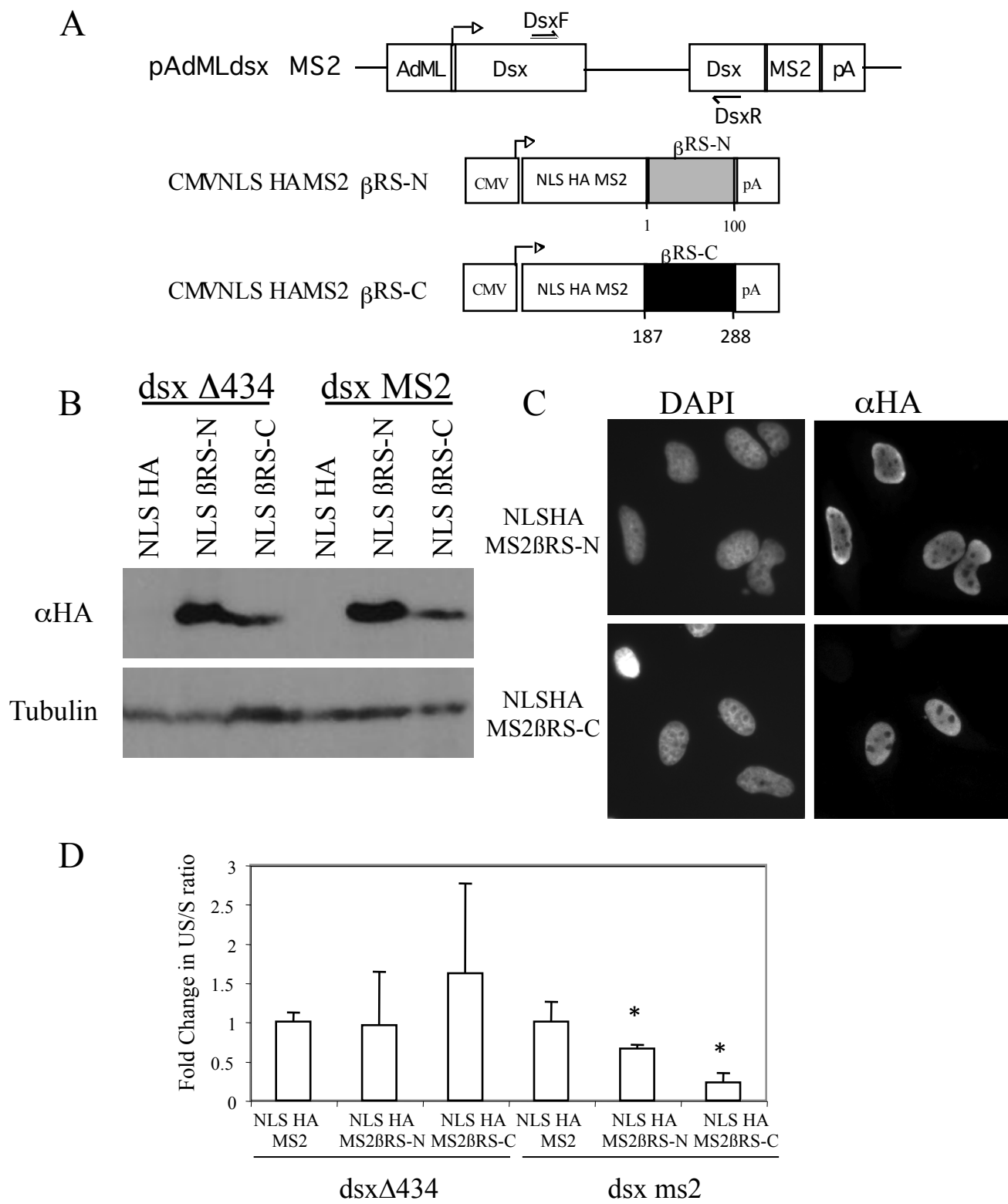


Figure F