

TABLE S1 Primers used for PCR amplification of the whole sequence of  
 plasmid pLRSA417

Primer	Sequence (5'-3')	Position (bp)*	Product (bp)
CP1F	GTCTAAACAATTTTTTACGGTAG	3-25	1701
CP1R	TTGAACAGCCTCTTTATAAGTGC	1681-1703	
CP2F	GGTGGGTTGTAATTGGATAACGT	1413-1435	1865
CP2R	TTCCGTCCGTCCCCTTTTATAT	3256-3277	
CP3F	GGTGTTTATAGTAGGTTTGATTT	3019-3041	1899
CP3R	TCTGATGTTGTTTCATTGTCTGTT	4894-4917	
CP4F	TGACTATTATCGGTACAAGTGGTG	4668-4691	1871
CP4R	TTCGTGTTTCTCTATTGCGTTTT	6516-6538	
CP5F	GGACAATATAACTGTTATGCACCC	6204-6227	1873
CP5R	CTACTTCCCAACCTTGTGCTTT	8055-8076	
CP6F	TGAAAGTAGTGGTGGAGGTTCA	7859-7880	1798
CP6R	TTTAGGTGGCATTGTATAGCCT	9635-9656	
CP7F	CGAGAATTAGGTAATGACGGTGT	9366-9388	1720
CP7R	TGCTTATTGGGTGTTTAGCTGG	11064-11085	
CP8F	ACCTCCAACCTGTAGTAAAAGCA	10760-10781	1830
CP8R	TAGTAACGCCCTTCCAGTGTA	12568-12589	
CP9F	TATCGGCGCAATACCAGACTAT	12274-12295	1876
CP9R	ATCAAACCTGCCTAGGTACAGCT	14128-14149	
CP10F	TCAATGGTTTACTCTACTGGAAG	13927-13949	1827

---

CP10R	CTGTGCATTGTCTAGCTGGTTT	15732-15753	
CP11F	AGTGGCTTTAGGTGTGAAATCA	15462-15483	
CP11R	CGAGTTGAAACGCCTGATACAT	17261-17282	1821
CP12F	ATGACCCAAGTACATTTTACTG	16930-16953	
CP12R	TGGAAAGACTAAATGCAACAACAG	18553-18576	1647
CP13F	TCAATCTTTATAAGTCCTTTTAT	18200-18222	
CP13R	GTCTGGACTTGACTGAGTTTATGG	20029-20052	1853
CP14F	GAACCATAACCTTTGTCTTGATAG	19815-19838	
CP14R	TCCATAGTAGAGGCAAAGCTCC	21514-21535	1721
CP15F	TGGGTCATGTAAAAGTCCTCCT	21254-21275	
CP15R	ACCATATAATTGACCACAAGCAGC	22735-22758	1505
CP16F	TGAAGTATAAAGCAGGTTGGGAGTCA	22013-22038	
CP16R	GAAGATACAATTGGCAGCTGGT	23454-23475	1463
CP17F	TCTGAAACCCTCTTGCTAAGTTC	23259-23281	
CP17R	TGGCTATTATGAGCGCAGCTTT	25008-25029	1771
CP18F	AGTGCCTTTTCATTTGCTGAT	24907-24928	
CP18R	GCCCGAACCGTACAAATATGAA	26761-26782	1876
CP19F	CTGGGGTATCGTCTTAAATGCG	26665-26686	
CP19R	TTGCAATCACACAATCACACAA	28527-28548	1884
CP20F	GCACAATACCTATCAAAACAAAG	28254-28276	
CP20R	TCGTTCAATTTGTTTATCACTTGCT	30058-30081	1781
CP21F	TGACACGACATGAAATGACACG	29889-29910	1924

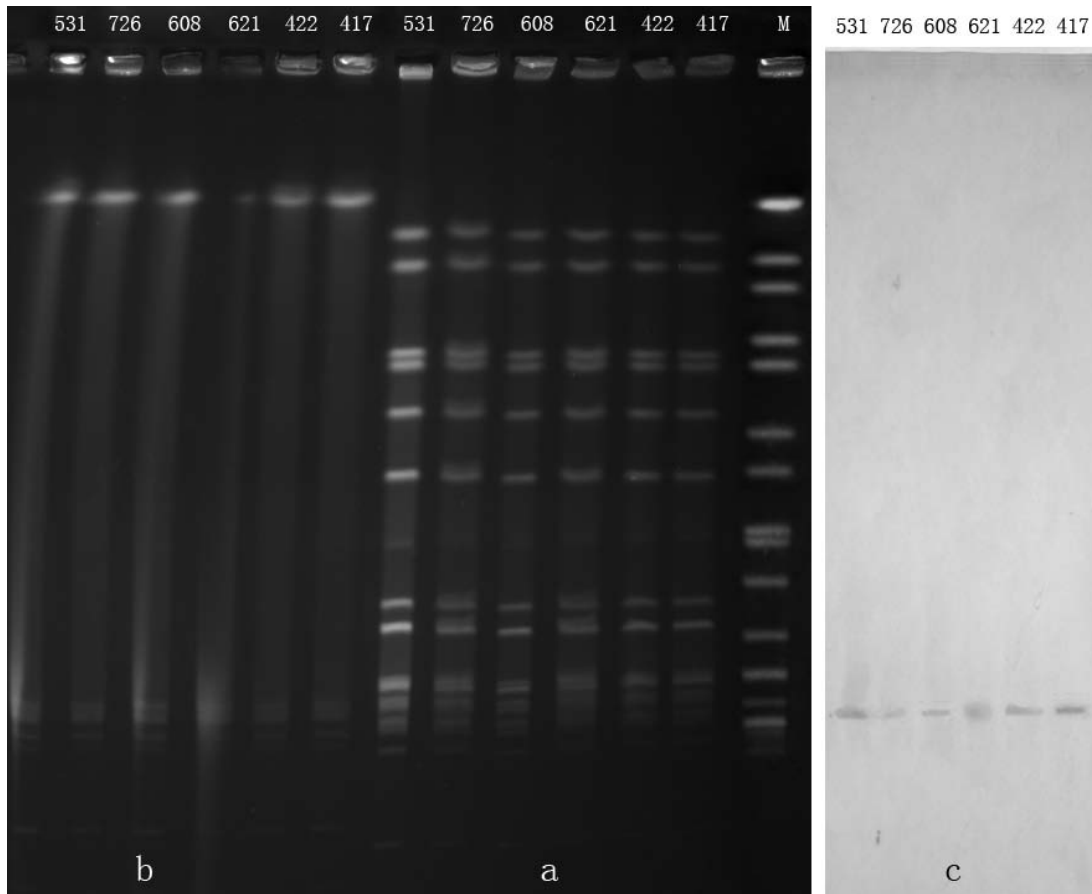
---

---

CP21R	AAGCCATATATTACACCTCGCT	31791-31812	
CP22F	AGAAATGTAGGAGGTGCAATATGT	31594-31617	
CP22R	TGATCGTTGGCCATTTTGTGTTGA	33335-33356	1763
CP23F	ATTCATGAACGAGATATAGACGGT	33111-33134	
CP23R	GCACAGAAAACACGCTTGAAAT	34892-34913	1803
CP24F	ACTTGTTTCGTCCCCTACTTCA	34657-34678	
CP24R	CACTTATGCGAACGTTCCGATC	36495-36516	1860
CP25F	GTTGCACTTTGTCCATTTGCTT	36353-36374	
CP25R	GTGATTGAGGCACCTTCTGATT	38180-38201	1849
CP26F	AAAGGCGTTAAGATAGTAGCTCA	37948-37970	
CP26R	TGTAGGCGATCTCTCAATATTGC	121-143	1700

---

\*The location of primer in sequence of pLRSA417



**FIG. S1.** (a) PFGE profiles of *Sma*I-digested chromosomal DNA, (b) *S*1-digested plasmid DNA, and (c) Southern blot hybridization for *cfr* gene of six LRSA. M, *Salmonella* serotype *Braenderup* H9812 digested with *Xba*I.